


Product datasheet

Anti-FABP-1 antibody ab245593

3 Images

Overview

Product name	Anti-FABP-1 antibody
Description	Rabbit polyclonal to FABP-1
Host species	Rabbit
Tested applications	Suitable for: IHC-P, WB
Species reactivity	Reacts with: Mouse, Human Predicted to work with: Rat, Rabbit, Horse, Chicken, Cow, Pig, Orangutan, Xenopus tropicalis 
Immunogen	Synthetic peptide within Human FABP-1 aa 380-430. The exact sequence is proprietary. NP_002071.2 Database link: P00505
Positive control	WB: HeLa, HEK-293T, Jurkat, TCMK-1 and NIH/3T3 whole cell lysate. IHC-P: Human prostate carcinoma and mouse renal cell carcinoma tissue.
General notes	<p>Reproducibility is key to advancing scientific discovery and accelerating scientists' next breakthrough.</p> <p>Abcam is leading the way with our range of recombinant antibodies, knockout-validated antibodies and knockout cell lines, all of which support improved reproducibility.</p> <p>We are also planning to innovate the way in which we present recommended applications and species on our product datasheets, so that only applications & species that have been tested in our own labs, our suppliers or by selected trusted collaborators are covered by our Abpromise™ guarantee.</p> <p>In preparation for this, we have started to update the applications & species that this product is Abpromise guaranteed for.</p> <p>We are also updating the applications & species that this product has been “predicted to work with,” however this information is not covered by our Abpromise guarantee.</p> <p>Applications & species from publications and Abreviews that have not been tested in our own labs or in those of our suppliers are not covered by the Abpromise guarantee.</p> <p>Please check that this product meets your needs before purchasing. If you have any questions, special requirements or concerns, please send us an inquiry and/or contact our Support team ahead of purchase. Recommended alternatives for this product can be found below, as well as customer reviews and Q&As.</p>

Properties

Form	Liquid
Storage instructions	Shipped at 4°C. Store at +4°C short term (1-2 weeks). Upon delivery aliquot. Store at -20°C long term. Avoid freeze / thaw cycle.
Storage buffer	pH: 7 Preservative: 0.09% Sodium azide Constituent: Tris citrate/phosphate
Purity	pH 7 to 8 Immunogen affinity purified
Purification notes	ab245593 was affinity purified using an epitope specific to FABP-1 immobilized on solid support.
Clonality	Polyclonal
Isotype	IgG

Applications

Our [Abpromise guarantee](#) covers the use of **ab245593** in the following tested applications.

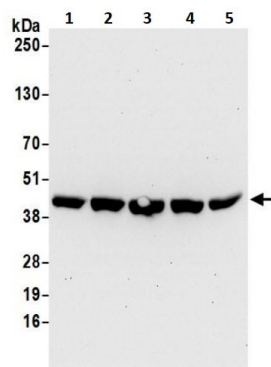
The application notes include recommended starting dilutions; optimal dilutions/concentrations should be determined by the end user.

Application	Abreviews	Notes
IHC-P		1/500 - 1/2000. Perform heat mediated antigen retrieval with citrate buffer pH 6 before commencing with IHC staining protocol.
WB		1/2000 - 1/10000. Predicted molecular weight: 48 kDa.

Target

Function	Plays a key role in amino acid metabolism. Important for metabolite exchange between mitochondria and cytosol. Facilitates cellular uptake of long-chain free fatty acids.
Sequence similarities	Belongs to the class-I pyridoxal-phosphate-dependent aminotransferase family.
Cellular localization	Mitochondrion matrix. Cell membrane. Exposure to alcohol promotes translocation to the cell membrane.

Images



Western blot - Anti-FABP-1 antibody (ab245593)

All lanes : Anti-FABP-1 antibody (ab245593) at 0.1 μ g/ml

Lane 1 : HeLa (Human epithelial cell line from cervix adenocarcinoma) whole cell lysate

Lane 2 : HEK-293T (Human epithelial cell line from embryonic kidney transformed with large T antigen) whole cell lysate

Lane 3 : Jurkat (Human T cell leukemia cell line from peripheral blood) whole cell lysate

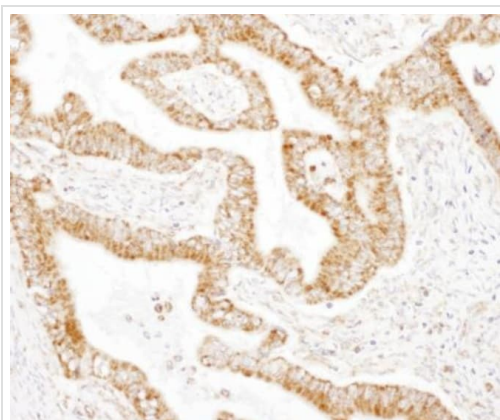
Lane 4 : TCMK-1 (Mouse kidney epithelial cell line) whole cell lysate

Lane 5 : NIH/3T3 (Mouse embryo fibroblast cell line) whole cell lysate

Lysates/proteins at 50 μ g per lane.

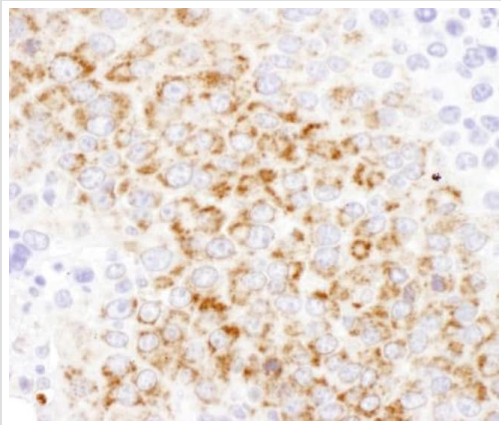
Predicted band size: 48 kDa

Exposure time: 30 seconds



Immunohistochemistry (Formalin/PFA-fixed paraffin-embedded sections) - Anti-FABP-1 antibody (ab245593)

Formalin-fixed, paraffin-embedded human prostate carcinoma tissue stained for FABP-1 with ab245593 at a 1/1000 dilution in immunohistochemical analysis. DAB staining. Counterstained using hematoxylin (blue).



Formalin-fixed, paraffin-embedded mouse renal cell carcinoma tissue stained for FABP-1 with ab245593 at a 1/1000 dilution in immunohistochemical analysis. DAB staining.

Immunohistochemistry (Formalin/PFA-fixed paraffin-embedded sections) - Anti-FABP-1 antibody (ab245593)

Please note: All products are "FOR RESEARCH USE ONLY. NOT FOR USE IN DIAGNOSTIC PROCEDURES"

Our Abpromise to you: Quality guaranteed and expert technical support

- Replacement or refund for products not performing as stated on the datasheet
- Valid for 12 months from date of delivery
- Response to your inquiry within 24 hours
- We provide support in Chinese, English, French, German, Japanese and Spanish
- Extensive multi-media technical resources to help you
- We investigate all quality concerns to ensure our products perform to the highest standards

If the product does not perform as described on this datasheet, we will offer a refund or replacement. For full details of the Abpromise, please visit <https://www.abcam.com/abpromise> or contact our technical team.

Terms and conditions

- Guarantee only valid for products bought direct from Abcam or one of our authorized distributors