


Product datasheet

Anti-Factor B antibody ab72658

1 Image

Overview

Product name	Anti-Factor B antibody
Description	Rabbit polyclonal to Factor B
Host species	Rabbit
Specificity	ab72658 detects a fragment from activated Factor B; the Bb fragment, resulting from cleavage adjacent to Lys260.
Tested applications	Suitable for: WB, ELISA
Species reactivity	Reacts with: Human Predicted to work with: Mouse, Sheep, Chimpanzee, Gorilla, Orangutan 
Immunogen	Synthetic peptide: KIVLDPSGSMN MLVLDGSD , corresponding to amino acids 260-280 of Human Factor B. Run BLAST with Run BLAST with
Positive control	Extracts from K562 cells, treated with etoposide (25uM, 1 hour).
General notes	<p>Reproducibility is key to advancing scientific discovery and accelerating scientists' next breakthrough.</p> <p>Abcam is leading the way with our range of recombinant antibodies, knockout-validated antibodies and knockout cell lines, all of which support improved reproducibility.</p> <p>We are also planning to innovate the way in which we present recommended applications and species on our product datasheets, so that only applications & species that have been tested in our own labs, our suppliers or by selected trusted collaborators are covered by our Abpromise™ guarantee.</p> <p>In preparation for this, we have started to update the applications & species that this product is Abpromise guaranteed for.</p> <p>We are also updating the applications & species that this product has been “predicted to work with,” however this information is not covered by our Abpromise guarantee.</p> <p>Applications & species from publications and Abreviews that have not been tested in our own labs or in those of our suppliers are not covered by the Abpromise guarantee.</p> <p>Please check that this product meets your needs before purchasing. If you have any questions, special requirements or concerns, please send us an inquiry and/or contact our Support team ahead of purchase. Recommended alternatives for this product can be found below, as well as customer reviews and Q&As.</p>

Properties

Form	Liquid
Storage instructions	Shipped at 4°C. Upon delivery aliquot and store at -20°C. Avoid freeze / thaw cycles.
Storage buffer	pH: 7.40 Preservative: 0.02% Sodium azide Constituents: 50% Glycerol (glycerin, glycerine), 0.87% Sodium chloride, PBS Without Mg ²⁺ and Ca ²⁺
Purity	Immunogen affinity purified
Clonality	Polyclonal
Isotype	IgG

Applications

Our [Abpromise guarantee](#) covers the use of **ab72658** in the following tested applications.

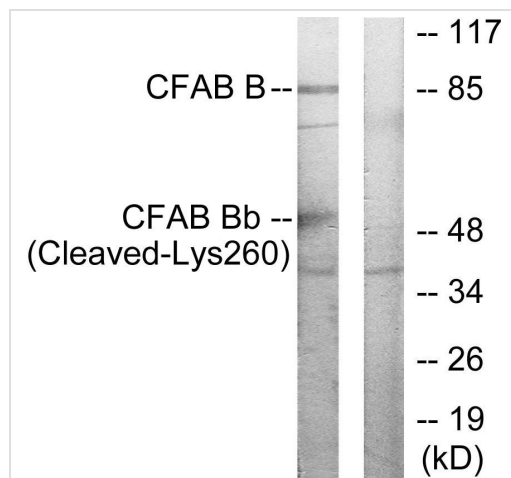
The application notes include recommended starting dilutions; optimal dilutions/concentrations should be determined by the end user.

Application	Abreviews	Notes
WB		1/500 - 1/1000. Detects a band of approximately 54 kDa (predicted molecular weight: 61 kDa).
ELISA		1/20000.

Target

Function	Factor B which is part of the alternate pathway of the complement system is cleaved by factor D into 2 fragments: Ba and Bb. Bb, a serine protease, then combines with complement factor 3b to generate the C3 or C5 convertase. It has also been implicated in proliferation and differentiation of preactivated B-lymphocytes, rapid spreading of peripheral blood monocytes, stimulation of lymphocyte blastogenesis and lysis of erythrocytes. Ba inhibits the proliferation of preactivated B-lymphocytes.
Involvement in disease	Defects in CFB are a cause of susceptibility to hemolytic uremic syndrome atypical type 4 (AHUS4) [MIM:612924]. An atypical form of hemolytic uremic syndrome. It is a complex genetic disease characterized by microangiopathic hemolytic anemia, thrombocytopenia, renal failure and absence of episodes of enterocolitis and diarrhea. In contrast to typical hemolytic uremic syndrome, atypical forms have a poorer prognosis, with higher death rates and frequent progression to end-stage renal disease. Note=Susceptibility to the development of atypical hemolytic uremic syndrome can be conferred by mutations in various components of or regulatory factors in the complement cascade system. Other genes may play a role in modifying the phenotype.
Sequence similarities	Belongs to the peptidase S1 family. Contains 1 peptidase S1 domain. Contains 3 Sushi (CCP/SCR) domains. Contains 1 VWFA domain.

Images



Western blot - Anti-Factor B antibody (ab72658)

All lanes : Anti-Factor B antibody (ab72658) at 1/200 dilution

Lane 1 : Extracts from K562 cells, treated with etoposide (25uM, 1hour)

Lane 2 : Extracts from K562 cells, treated with etoposide (25uM, 1hour) with Cl-peptide at 5 µg

Lysates/proteins at 5 µg per lane.

Predicted band size: 61 kDa

Observed band size: 54 and 86 kDa

[why is the actual band size different from the predicted?](#)

Additional bands at: 40 kDa (possible non-specific binding), 75 kDa. We are unsure as to the identity of these extra bands.

Please note: All products are "FOR RESEARCH USE ONLY. NOT FOR USE IN DIAGNOSTIC PROCEDURES"

Our Abpromise to you: Quality guaranteed and expert technical support

- Replacement or refund for products not performing as stated on the datasheet
- Valid for 12 months from date of delivery
- Response to your inquiry within 24 hours
- We provide support in Chinese, English, French, German, Japanese and Spanish
- Extensive multi-media technical resources to help you
- We investigate all quality concerns to ensure our products perform to the highest standards

If the product does not perform as described on this datasheet, we will offer a refund or replacement. For full details of the Abpromise, please visit <https://www.abcam.com/abpromise> or contact our technical team.

Terms and conditions

- Guarantee only valid for products bought direct from Abcam or one of our authorized distributors