



## Product datasheet

# Anti-FAM13A antibody ab122440

[2 References](#) [5 Images](#)

### Overview

<b>Product name</b>	Anti-FAM13A antibody
<b>Description</b>	Rabbit polyclonal to FAM13A
<b>Host species</b>	Rabbit
<b>Tested applications</b>	<b>Suitable for:</b> IHC-P, ICC/IF
<b>Species reactivity</b>	<b>Reacts with:</b> Human
<b>Immunogen</b>	<p>Recombinant fragment corresponding to Human FAM13A aa 904-973 (C terminal). Sequence:</p> <p>TDFSARCFLDQFEDDADGFI SPMD DKIPSKCSQDTGLSN LHAASIPELLE HLQEMREEKKRIRKLRDFE</p> <p>Database link: <a href="#">O94988</a></p> <p style="text-align: right;">  <a href="#">Run BLAST with</a>                <a href="#">Run BLAST with</a> </p>
<b>Positive control</b>	IHC-P: Human testis, small intestine, Fallopian tube and cerebral cortex Tissue ICC/IF: Human cell line U-2 OS
<b>General notes</b>	<p>The Life Science industry has been in the grips of a reproducibility crisis for a number of years. Abcam is leading the way in addressing this with our range of recombinant monoclonal antibodies and knockout edited cell lines for gold-standard validation. Please check that this product meets your needs before purchasing.</p> <p>If you have any questions, special requirements or concerns, please send us an inquiry and/or contact our Support team ahead of purchase. Recommended alternatives for this product can be found below, along with publications, customer reviews and Q&amp;As</p>

### Properties

<b>Form</b>	Liquid
<b>Storage instructions</b>	Shipped at 4°C. Upon delivery aliquot and store at -20°C. Avoid repeated freeze / thaw cycles.
<b>Storage buffer</b>	<p>pH: 7.20</p> <p>Preservative: 0.02% Sodium azide</p> <p>Constituents: 59% PBS, 40% Glycerol (glycerin, glycerine)</p>
<b>Purity</b>	Immunogen affinity purified
<b>Clonality</b>	Polyclonal

Isotype

IgG

## Applications

### The Abpromise guarantee

Our [Abpromise guarantee](#) covers the use of ab122440 in the following tested applications.

The application notes include recommended starting dilutions; optimal dilutions/concentrations should be determined by the end user.

Application	Abreviews	Notes
IHC-P		1/500 - 1/1000. Perform heat mediated antigen retrieval with citrate buffer pH 6 before commencing with IHC staining protocol.
ICC/IF		Use a concentration of 0.25 - 2 µg/ml.

## Target

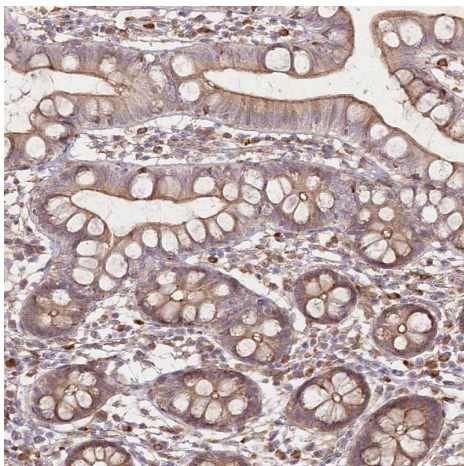
### Tissue specificity

Isoform 1 is widely expressed, with highest expression in skeletal muscle, thymus, brain and lung. Isoform 3 is less abundant than isoform 1 and predominantly expressed in kidney, pancreas, liver, lung and thymus.

### Sequence similarities

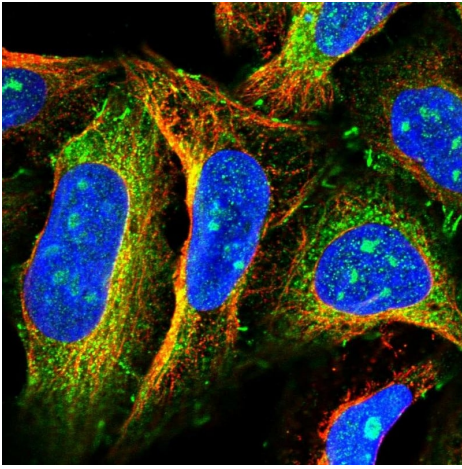
Belongs to the FAM13 family.  
Contains 1 Rho-GAP domain.

## Images



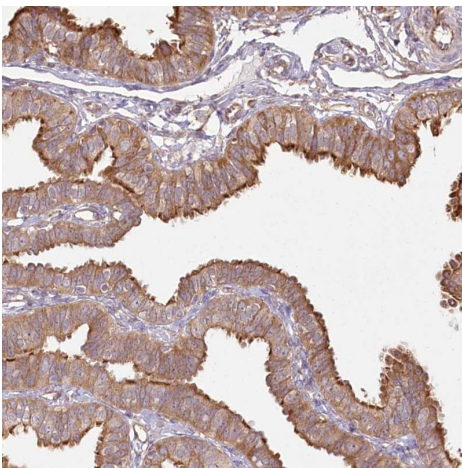
Immunohistochemical analysis of human small intestine labeling FAM13A with ab122440 showing strong cytoplasmic positivity in glandular cells.

Immunohistochemistry (Formalin/PFA-fixed paraffin-embedded sections) - Anti-FAM13A antibody (ab122440)



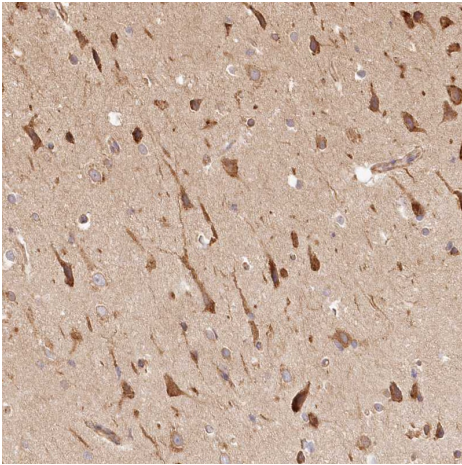
Immunocytochemistry/ Immunofluorescence - Anti-FAM13A antibody (ab122440)

Immunocytochemistry/ Immunofluorescence analysis of U2-OS cells labeling FAM13A with ab122440 showing localization to nucleoli, cytosol & cell junctions.



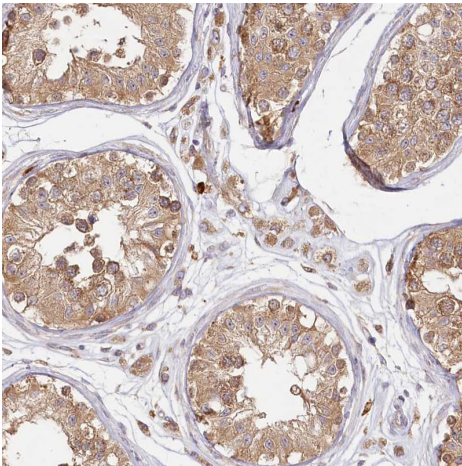
Immunohistochemistry (Formalin/PFA-fixed paraffin-embedded sections) - Anti-FAM13A antibody (ab122440)

Immunohistochemical analysis of human fallopian tube labeling FAM13A with ab122440 showing strong cytoplasmic positivity in glandular cells.



Immunohistochemical analysis of human cerebral cortex labeling FAM13A with ab122440 showing strong cytoplasmic positivity in neurons.

Immunohistochemistry (Formalin/PFA-fixed paraffin-embedded sections) - Anti-FAM13A antibody (ab122440)



Immunohistochemical analysis of human testis labeling FAM13A with ab122440 showing strong cytoplasmic positivity in glandular cells in seminiferous duct.

Immunohistochemistry (Formalin/PFA-fixed paraffin-embedded sections) - Anti-FAM13A antibody (ab122440)

**Please note:** All products are "FOR RESEARCH USE ONLY. NOT FOR USE IN DIAGNOSTIC PROCEDURES"

## **Our Abpromise to you: Quality guaranteed and expert technical support**

---

- Replacement or refund for products not performing as stated on the datasheet
- Valid for 12 months from date of delivery
- Response to your inquiry within 24 hours
  
- We provide support in Chinese, English, French, German, Japanese and Spanish
- Extensive multi-media technical resources to help you
- We investigate all quality concerns to ensure our products perform to the highest standards

If the product does not perform as described on this datasheet, we will offer a refund or replacement. For full details of the Abpromise, please visit <https://www.abcam.com/abpromise> or contact our technical team.

## **Terms and conditions**

---

- Guarantee only valid for products bought direct from Abcam or one of our authorized distributors