



Product datasheet

Anti-FAM53B antibody ab235829

2 Images

Overview

| | |
|----------------------------|---|
| Product name | Anti-FAM53B antibody |
| Description | Rabbit polyclonal to FAM53B |
| Host species | Rabbit |
| Tested applications | Suitable for: WB, IHC-P |
| Species reactivity | Reacts with: Human |
| Immunogen | <p>Recombinant full length protein corresponding to Human FAM53B aa 1-305. Sequence:</p> <p>MVMVLSESLSTRGADSIACGTF SRELHTPKKMSQGPT LFSCGIMENDRWR DLDRKCPLQIDQPSTSIWECLPEKDSSLWHREAVTAC AVTSLIKDLSISD HNGNPSAPPSKRQCRSLSFSDEMSSCRTSWRPLGS KWWTPVEKRRCYSGG SVQRYSNGFSTMQRSSSFSLPSRANVLSSPCDQAGL HHRFGGQPCQGVPG SAPCGQAGDTWSPDLHPVGGRLDLQRSLSCSHEQ FSFVEYCPPSANSTP ASTPELARRSSGLSRSRSQPCVLNDKKVGVKRRRPE EVQEQRPSLDLAKM AQIAP</p> <p>Database link: Q14153-2</p> <p style="text-align: right;"> Run BLAST with  Run BLAST with</p> |
| Positive control | WB: MCF7, A549 and HCT 116 whole cell lysates. IHC-P: Human breast cancer tissue. |

Properties

| | |
|-----------------------------|---|
| Form | Liquid |
| Storage instructions | Shipped at 4°C. Store at +4°C short term (1-2 weeks). Upon delivery aliquot. Store at -20°C long term. Avoid freeze / thaw cycle. |
| Storage buffer | <p>pH: 7.40 Preservative: 0.03% Proclin Constituents: PBS, 50% Glycerol</p> |

| | |
|---------------------------|--------------------|
| Purity | Protein G purified |
| Purification notes | Purity >95%. |
| Clonality | Polyclonal |
| Isotype | IgG |

Applications

Our [Abpromise guarantee](#) covers the use of **ab235829** in the following tested applications.

The application notes include recommended starting dilutions; optimal dilutions/concentrations should be determined by the end user.

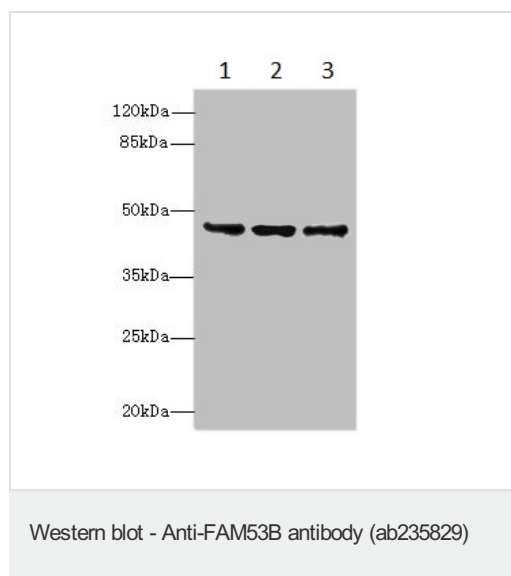
| Application | Abreviews | Notes |
|-------------|-----------|---|
| WB | | 1/500 - 1/2000. Predicted molecular weight: 46 kDa. |
| IHC-P | | 1/20 - 1/200. |

Target

Tissue specificity Detected in skeletal muscle, kidney, spleen, thyroid, testis, ovary, small intestine, colon and peripheral blood.

Sequence similarities Belongs to the FAM53 family.

Images



All lanes : Anti-FAM53B antibody (ab235829) at 1/500 dilution

Lane 1 : MCF7 (human breast adenocarcinoma cell line) whole cell lysate

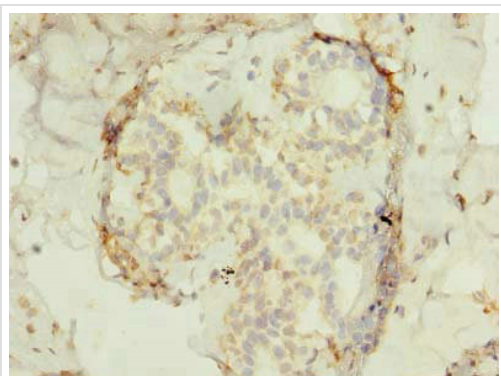
Lane 2 : A549 (human lung carcinoma cell line) whole cell lysate

Lane 3 : HCT 116 (human colorectal carcinoma cell line) whole cell lysate

Secondary

All lanes : Goat polyclonal to Rabbit IgG at 1/10000 dilution

Predicted band size: 46 kDa



Immunohistochemistry (Formalin/PFA-fixed paraffin-embedded sections) - Anti-FAM53B antibody (ab235829)

Paraffin-embedded human breast cancer tissue stained for FAM53B using ab235829 at 1/100 dilution in immunohistochemical analysis.

Please note: All products are "FOR RESEARCH USE ONLY. NOT FOR USE IN DIAGNOSTIC PROCEDURES"

Our Abpromise to you: Quality guaranteed and expert technical support

- Replacement or refund for products not performing as stated on the datasheet
- Valid for 12 months from date of delivery
- Response to your inquiry within 24 hours
- We provide support in Chinese, English, French, German, Japanese and Spanish
- Extensive multi-media technical resources to help you
- We investigate all quality concerns to ensure our products perform to the highest standards

If the product does not perform as described on this datasheet, we will offer a refund or replacement. For full details of the Abpromise, please visit <https://www.abcam.com/abpromise> or contact our technical team.

Terms and conditions

- Guarantee only valid for products bought direct from Abcam or one of our authorized distributors