

Product datasheet

Anti-FAM86A antibody ab235380

2 Images

Overview

Product name	Anti-FAM86A antibody
Description	Rabbit polyclonal to FAM86A
Host species	Rabbit
Tested applications	Suitable for: WB, IHC-P
Species reactivity	Reacts with: Human
Immunogen	Recombinant full length protein corresponding to Human FAM86A aa 1-330.

Sequence:

```

MAPEENAGTELLLQSFERRFLAARTLRSFPWQSLEAK
LRDSSDSELLRDI
LHKTVKHPVCVKHPPSVKYARCFLSELIKKHEAVHTEP
LDELYEALAETL
MAKESTQGHRSYLLPSGGSVTLSESTAIISYGTTGLVT
WDAALYLAEWAI
ENPAVFTNRTVLELGGAGLTGLAICKMCRPRAYIFSD
CHSRVLEQLRGN
VLLNGLSLEADITAKLDSRVTVVAQLDWDVATVHQLS
AFQPDVVIAADV
YCPEAIMSLVGVLRLAACREHQRAPYVAVFTVRNP
ETCQLFTTELGRA
GIRWEVEPRHEQKLFYEEHLEMAMLNLT
    
```

Database link: [Q96G04-1](#)

 [Run BLAST with](#)

 [Run BLAST with](#)

Positive control	WB: HeLa and HEK-293T whole cell lysate. IHC-P: Small intestine tissue.
-------------------------	---

Properties

Form	Liquid
Storage instructions	Shipped at 4°C. Store at +4°C short term (1-2 weeks). Upon delivery aliquot. Store at -20°C long term. Avoid freeze / thaw cycle.
Storage buffer	pH: 7.4 Preservative: 0.03% Proclin Constituents: PBS, 50% Glycerol

Purity	Protein G purified
Purification notes	Purity >95%
Clonality	Polyclonal
Isotype	IgG

Applications

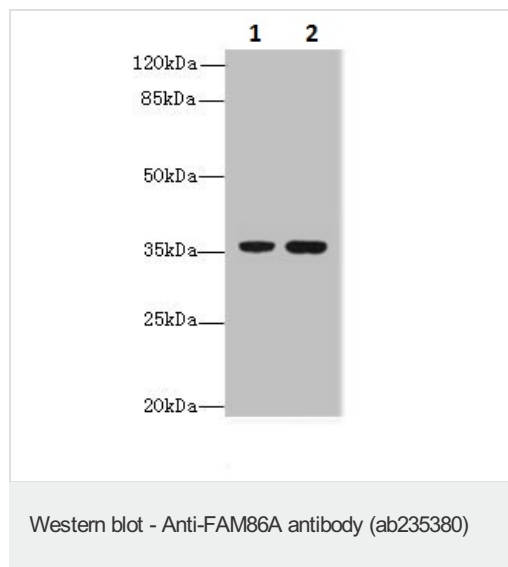
Our [Abpromise guarantee](#) covers the use of **ab235380** in the following tested applications.

The application notes include recommended starting dilutions; optimal dilutions/concentrations should be determined by the end user.

Application	Abreviews	Notes
WB		1/500 - 1/2000.
IHC-P		1/20 - 1/200.

Target

Images



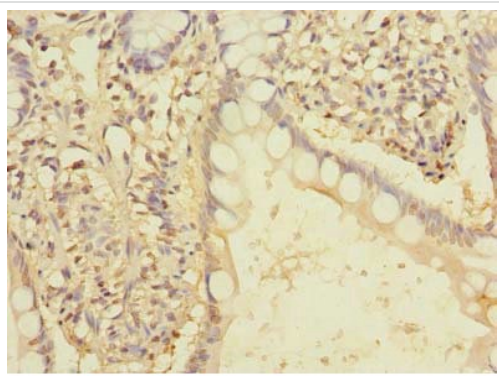
All lanes : Anti-FAM86A antibody (ab235380) at 1/500 dilution

Lane 1 : HeLa (human epithelial cell line from cervix adenocarcinoma) whole cell lysate

Lane 2 : HEK-293T (human epithelial cell line from embryonic kidney transformed with large T antigen) whole cell lysate

Secondary

All lanes : Goat polyclonal to rabbit IgG at 1/10000 dilution



Paraffin-embedded human small intestine tissue stained for FAM86A using ab235380 at 1/100 dilution in immunohistochemical analysis.

Immunohistochemistry (Formalin/PFA-fixed paraffin-embedded sections) - Anti-FAM86A antibody (ab235380)

Please note: All products are "FOR RESEARCH USE ONLY. NOT FOR USE IN DIAGNOSTIC PROCEDURES"

Our Abpromise to you: Quality guaranteed and expert technical support

- Replacement or refund for products not performing as stated on the datasheet
- Valid for 12 months from date of delivery
- Response to your inquiry within 24 hours

- We provide support in Chinese, English, French, German, Japanese and Spanish
- Extensive multi-media technical resources to help you
- We investigate all quality concerns to ensure our products perform to the highest standards

If the product does not perform as described on this datasheet, we will offer a refund or replacement. For full details of the Abpromise, please visit <https://www.abcam.com/abpromise> or contact our technical team.

Terms and conditions

- Guarantee only valid for products bought direct from Abcam or one of our authorized distributors