



Product datasheet

Anti-FAM96B antibody ab230410

3 Images

Overview

Product name	Anti-FAM96B antibody
Description	Rabbit polyclonal to FAM96B
Host species	Rabbit
Tested applications	Suitable for: WB, IP, IHC-P
Species reactivity	Reacts with: Mouse, Human
Immunogen	<p>Recombinant full length protein corresponding to Human FAM96B aa 1-163. Sequence:</p> <p>MVGGGGVGGGLENANPLIYQRSGERPVTAGEEDEQVP DSIDAREIFDLI RSINDPEHPLTLEELNVVEQVRVQVSDPESTVAVAFPTIP HCSMATLIG LSIKVKLLRSLPQRFKMDVHITPGTHASEHAVNKQLADKE RVAAALENTH LLEVVNQCLSARS</p> <p>Database link: Q9Y3D0</p> <p style="text-align: right;">  Run BLAST with  Run BLAST with </p>
Positive control	WB: Mouse gonadal tissue; MCF7, HeLa, K562 and A375 whole cell lysates. IHC-P: Human kidney tissue. IP: HeLa whole cell lysate.
General notes	<p>Reproducibility is key to advancing scientific discovery and accelerating scientists' next breakthrough.</p> <p>Abcam is leading the way with our range of recombinant antibodies, knockout-validated antibodies and knockout cell lines, all of which support improved reproducibility.</p> <p>We are also planning to innovate the way in which we present recommended applications and species on our product datasheets, so that only applications & species that have been tested in our own labs, our suppliers or by selected trusted collaborators are covered by our Abpromise™ guarantee.</p> <p>In preparation for this, we have started to update the applications & species that this product is Abpromise guaranteed for.</p> <p>We are also updating the applications & species that this product has been “predicted to work with,” however this information is not covered by our Abpromise guarantee.</p> <p>Applications & species from publications and Abreviews that have not been tested in our own labs or in those of our suppliers are not covered by the Abpromise guarantee.</p>

Please check that this product meets your needs before purchasing. If you have any questions, special requirements or concerns, please send us an inquiry and/or contact our Support team ahead of purchase. Recommended alternatives for this product can be found below, as well as customer reviews and Q&As.

Properties

Form	Liquid
Storage instructions	Shipped at 4°C. Store at +4°C short term (1-2 weeks). Upon delivery aliquot. Store at -20°C long term. Avoid freeze / thaw cycle.
Storage buffer	pH: 7.30 Preservative: 0.02% Sodium azide Constituents: PBS, 50% Glycerol (glycerin, glycerine)
Purity	Immunogen affinity purified
Clonality	Polyclonal
Isotype	IgG

Applications

Our [Abpromise guarantee](#) covers the use of **ab230410** in the following tested applications.

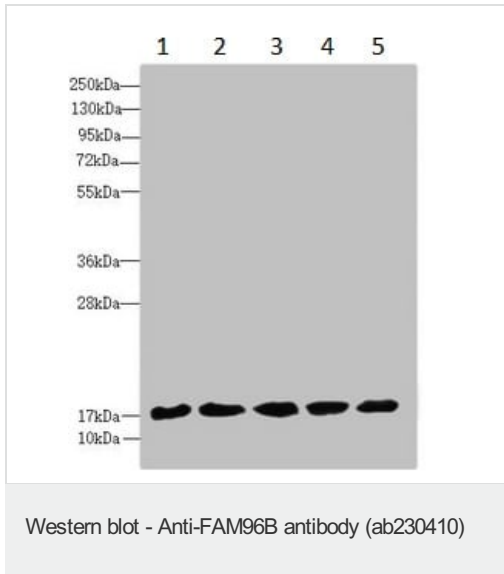
The application notes include recommended starting dilutions; optimal dilutions/concentrations should be determined by the end user.

Application	Abreviews	Notes
WB		1/1000 - 1/5000. Detects a band of approximately 18 kDa (predicted molecular weight: 18 kDa).
IP		1/200 - 1/2000.
IHC-P		1/20 - 1/200.

Target

Function	Component of the cytosolic iron-sulfur protein assembly (CIA) complex, a multiprotein complex that mediates the incorporation of iron-sulfur cluster into extramitochondrial Fe/S proteins. As part of the mitotic spindle-associated MMXD complex it plays a role in chromosome segregation, probably by facilitating iron-sulfur cluster assembly into ERCC2/XPD.
Sequence similarities	Belongs to the MIP18 family.
Cellular localization	Nucleus. Cytoplasm > cytoskeleton > spindle.

Images



All lanes : Anti-TRIM10 antibody ([ab230409](#)) at 1/10000 dilution

Lane 1 : Mouse gonadal tissue lysate

Lane 2 : MCF7 (human breast adenocarcinoma cell line) whole cell lysate

Lane 3 : HeLa (human epithelial cell line from cervix adenocarcinoma) whole cell lysate

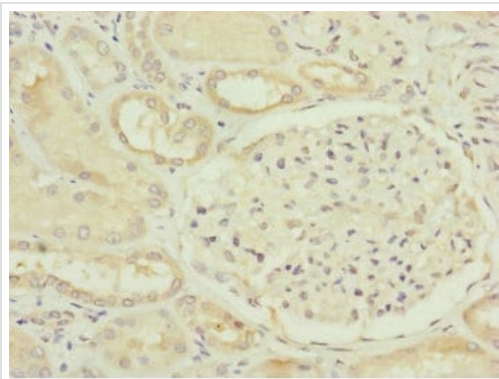
Lane 4 : K562 (human chronic myelogenous leukemia cell line from bone marrow) whole cell lysate

Lane 5 : A-375 (human malignant melanoma cell line) whole cell lysate

Secondary

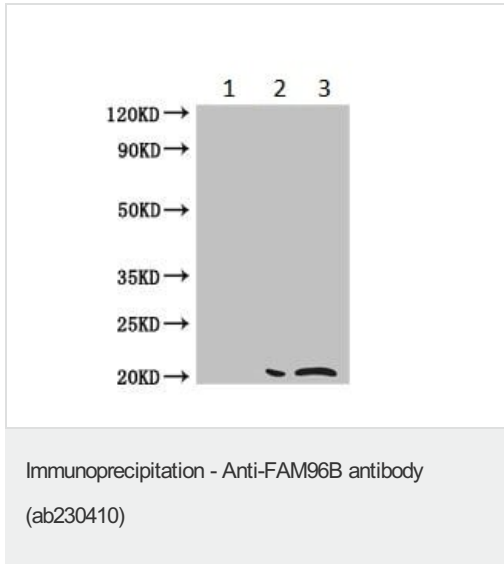
All lanes : Goat polyclonal to rabbit IgG at 1/10000 dilution

Predicted band size: 18 kDa



Paraffin-embedded human kidney tissue stained for FAM96B using [ab230410](#) at 1/100 dilution in immunochemical analysis.

Immunohistochemistry (Formalin/PFA-fixed paraffin-embedded sections) - Anti-FAM96B antibody ([ab230410](#))



FAM96B was immunoprecipitated from 500 μ g HeLa (human epithelial cell line from cervix adenocarcinoma) whole cell lysate with 4 μ g of ab230410. Western blot was performed from the immunoprecipitate using ab230410 and an HRP-conjugated anti-rabbit IgG, specific to the non-reduced form of IgG was used as the secondary antibody at 1/50,000 dilution.

Lane 1: 1 μ g of rabbit monoclonal IgG instead of ab230410 in HeLa whole cell lysate.

Lane 2: ab230410 IP in HeLa whole cell lysate.

Lane 3: HeLa whole cell lysate 20 μ g (input).

Please note: All products are "FOR RESEARCH USE ONLY. NOT FOR USE IN DIAGNOSTIC PROCEDURES"

Our Abpromise to you: Quality guaranteed and expert technical support

- Replacement or refund for products not performing as stated on the datasheet
- Valid for 12 months from date of delivery
- Response to your inquiry within 24 hours
- We provide support in Chinese, English, French, German, Japanese and Spanish
- Extensive multi-media technical resources to help you
- We investigate all quality concerns to ensure our products perform to the highest standards

If the product does not perform as described on this datasheet, we will offer a refund or replacement. For full details of the Abpromise, please visit <https://www.abcam.com/abpromise> or contact our technical team.

Terms and conditions

- Guarantee only valid for products bought direct from Abcam or one of our authorized distributors