




Product datasheet

Anti-Fascin antibody [FSCN1/417] ab220195

1 References 4 Images

Overview

Product name	Anti-Fascin antibody [FSCN1/417]
Description	Mouse monoclonal [FSCN1/417] to Fascin
Host species	Mouse
Tested applications	Suitable for: WB, IHC-P
Species reactivity	Reacts with: Human Predicted to work with: Mouse, Rat 
Immunogen	Recombinant full length protein corresponding to Human Fascin aa 2-493. Sequence: TANGTAEAVQIQFGLINCGNKYL TAEAFGFKVNASASSLKK KQIWTLEQP PDEAGSAAVC LRSHLGRYLAADKDGNTCEREVPGPDCRFLVAHDDG RWSLQSEAHRRYFGGTEDRLSC FAQTVSPA EKWSVHIAMHPQVNIYSV TRKRYAHL SARP ADEIAVDRDVPWGVD SLITLAF QDQRYSVQTADHRF LRHDGRLVARPEPATGYTLEFRSGKVAFRDCEGRYLAPS GPSGTLK AG KATKVGKDELFALEQSCAQVVLQAA NERNVSTRQGMDL SANQDEETDQET FQLEIDRD TKKCAFRTH TGKYWTLTATGGVQSTASSKNASCYFDIEWR DRRITLRASNGKFVTSKKN G QLAASVETAGDSELFLMKLINRPIVFR GEHGFICR KVTGTL DANRSSYDVFQLEFNDG AYNIKDSTGKYWTVGS DSAVTSSGDTPVDFFFEFC DYNKVAIKVGGRYLKGDHAG VLKAS AETV DPASLWEY Database link: Q16658  Run BLAST with  Run BLAST with
Positive control	Human Hodgkin's lymphoma, ovarian carcinoma and testicular carcinoma tissues; HeLa cell lysate.
General notes	Reproducibility is key to advancing scientific discovery and accelerating scientists' next breakthrough.

Abcam is leading the way with our range of recombinant antibodies, knockout-validated antibodies and knockout cell lines, all of which support improved reproducibility.

We are also planning to innovate the way in which we present recommended applications and species on our product datasheets, so that only applications & species that have been tested in our own labs, our suppliers or by selected trusted collaborators are covered by our Abpromise™ guarantee.

In preparation for this, we have started to update the applications & species that this product is Abpromise guaranteed for.

We are also updating the applications & species that this product has been “predicted to work with,” however this information is not covered by our Abpromise guarantee.

Applications & species from publications and Abreviews that have not been tested in our own labs or in those of our suppliers are not covered by the Abpromise guarantee.

Please check that this product meets your needs before purchasing. If you have any questions, special requirements or concerns, please send us an inquiry and/or contact our Support team ahead of purchase. Recommended alternatives for this product can be found below, as well as customer reviews and Q&As.

Properties

Form	Liquid
Storage instructions	Shipped at 4°C. Store at +4°C short term (1-2 weeks). Upon delivery aliquot. Store at -20°C long term. Avoid freeze / thaw cycle.
Storage buffer	Preservative: 0.05% Sodium azide Constituents: 0.05% BSA, 99% PBS
Purity	Protein A/G purified
Purification notes	ab220195 was purified from Bioreactor Concentrate by Protein A/G.
Clonality	Monoclonal
Clone number	FSCN1/417
Isotype	IgG2a
Light chain type	kappa

Applications

Our [Abpromise guarantee](#) covers the use of **ab220195** in the following tested applications.

The application notes include recommended starting dilutions; optimal dilutions/concentrations should be determined by the end user.

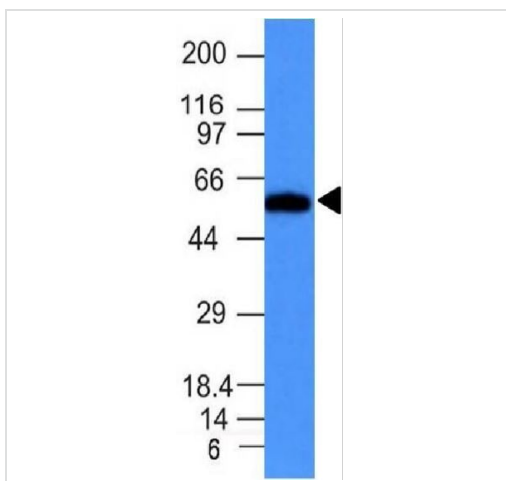
Application	Abreviews	Notes
WB		Use a concentration of 0.5 - 1 µg/ml. Predicted molecular weight: 54 kDa.
IHC-P		Use a concentration of 0.5 - 1 µg/ml. Perform heat mediated antigen retrieval with citrate buffer pH 6 before commencing with IHC staining protocol.

Target

Target

Function	Organizes filamentous actin into bundles with a minimum of 4.1:1 actin/fascin ratio. Plays a role in the organization of actin filament bundles and the formation of microspikes, membrane ruffles, and stress fibers. Important for the formation of a diverse set of cell protrusions, such as filopodia, and for cell motility and migration.
Tissue specificity	Ubiquitous.
Sequence similarities	Belongs to the fascin family.
Domain	Composed of four beta-trefoil domains.
Post-translational modifications	Phosphorylation on Ser-39 inhibits the actin-binding ability of fascin.
Cellular localization	Cytoplasm > cytoskeleton. Cell projection > filopodium. Cell projection > invadopodium.

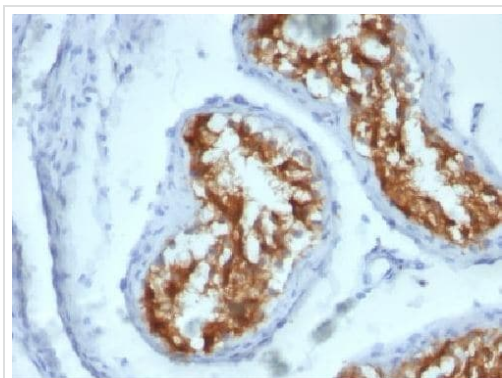
Images



Western blot - Anti-Fascin antibody [FSCN1/417] (ab220195)

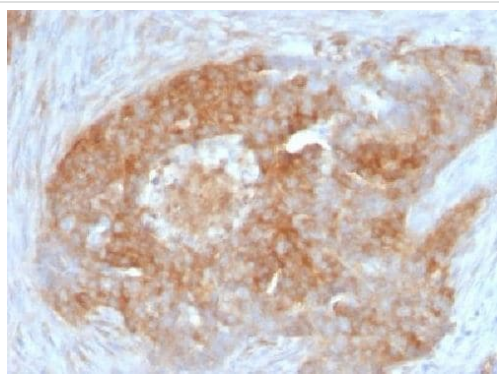
Anti-Fascin antibody [FSCN1/417] (ab220195) at 1 μ g/ml + HeLa cell lysate

Predicted band size: 54 kDa



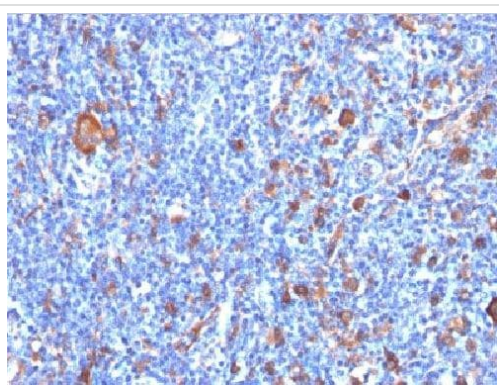
Immunohistochemistry (Formalin/PFA-fixed paraffin-embedded sections) - Anti-Fascin antibody [FSCN1/417] (ab220195)

Immunohistochemical analysis of formalin-fixed and paraffin-embedded Human testicular carcinoma tissue labeling Fascin with ab220195 at 1 μ g/ml dilution.



Immunohistochemistry (Formalin/PFA-fixed paraffin-embedded sections) - Anti-Fascin antibody [FSCN1/417] (ab220195)

Immunohistochemical analysis of formalin-fixed and paraffin-embedded Human ovarian carcinoma tissue labeling Fascin with ab220195 at 1 µg/ml dilution.



Immunohistochemistry (Formalin/PFA-fixed paraffin-embedded sections) - Anti-Fascin antibody [FSCN1/417] (ab220195)

Immunohistochemical analysis of formalin-fixed and paraffin-embedded Human Hodgkin's lymphoma tissue labeling Fascin with ab220195 at 1 µg/ml dilution.

Please note: All products are "FOR RESEARCH USE ONLY. NOT FOR USE IN DIAGNOSTIC PROCEDURES"

Our Abpromise to you: Quality guaranteed and expert technical support

- Replacement or refund for products not performing as stated on the datasheet
- Valid for 12 months from date of delivery
- Response to your inquiry within 24 hours

- We provide support in Chinese, English, French, German, Japanese and Spanish
- Extensive multi-media technical resources to help you
- We investigate all quality concerns to ensure our products perform to the highest standards

If the product does not perform as described on this datasheet, we will offer a refund or replacement. For full details of the Abpromise, please visit <https://www.abcam.com/abpromise> or contact our technical team.

Terms and conditions

- Guarantee only valid for products bought direct from Abcam or one of our authorized distributors