




Product datasheet

Anti-FASTKD2 antibody ab235113

3 Images

Overview

Product name	Anti-FASTKD2 antibody
Description	Rabbit polyclonal to FASTKD2
Host species	Rabbit
Tested applications	Suitable for: IHC-P, WB
Species reactivity	Reacts with: Mouse, Rat, Human Predicted to work with: Orangutan 
Immunogen	Recombinant fragment corresponding to Human FASTKD2 aa 117-203. Sequence: KQSLVPVDKSDDELKKVNLNHEVSNEDVLTKETKPNRISS RKLSEECNSL SDVLDAFSKAPTFPSSNYFTAMWTIAKRLSDDQKRFE Database link: Q9NYY8  Run BLAST with  Run BLAST with
Positive control	WB: Rat and mouse heart lysate. IHC-P: Human spleen and heart tissue.
General notes	<p>Reproducibility is key to advancing scientific discovery and accelerating scientists' next breakthrough.</p> <p>Abcam is leading the way with our range of recombinant antibodies, knockout-validated antibodies and knockout cell lines, all of which support improved reproducibility.</p> <p>We are also planning to innovate the way in which we present recommended applications and species on our product datasheets, so that only applications & species that have been tested in our own labs, our suppliers or by selected trusted collaborators are covered by our Abpromise™ guarantee.</p> <p>In preparation for this, we have started to update the applications & species that this product is Abpromise guaranteed for.</p> <p>We are also updating the applications & species that this product has been “predicted to work with,” however this information is not covered by our Abpromise guarantee.</p> <p>Applications & species from publications and Abreviews that have not been tested in our own labs or in those of our suppliers are not covered by the Abpromise guarantee.</p> <p>Please check that this product meets your needs before purchasing. If you have any questions, special requirements or concerns, please send us an inquiry and/or contact our Support team ahead of purchase. Recommended alternatives for this product can be found below, as well as</p>

customer reviews and Q&As.

Properties

Form	Liquid
Storage instructions	Shipped at 4°C. Store at +4°C short term (1-2 weeks). Upon delivery aliquot. Store at -20°C long term. Avoid freeze / thaw cycle.
Storage buffer	pH: 7.40 Constituents: PBS, 50% Glycerol (glycerin, glycerine), 0.03% Proclin 300
Purity	Protein G purified
Purification notes	Purity >95%.
Clonality	Polyclonal
Isotype	IgG

Applications

Our [Abpromise guarantee](#) covers the use of **ab235113** in the following tested applications.

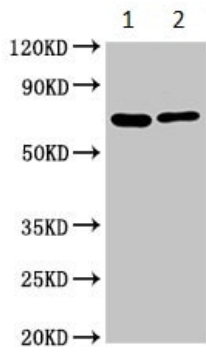
The application notes include recommended starting dilutions; optimal dilutions/concentrations should be determined by the end user.

Application	Abreviews	Notes
IHC-P		1/100 - 1/300.
WB		1/500 - 1/5000. Predicted molecular weight: 81, 75 kDa.

Target

Sequence similarities	Belongs to the FAST kinase family. Contains 1 RAP domain.
------------------------------	--

Images



Western blot - Anti-FASTKD2 antibody (ab235113)

All lanes : Anti-FASTKD2 antibody (ab235113) at 1/500 dilution

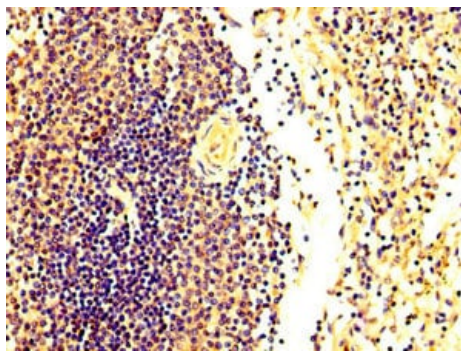
Lane 1 : Rat heart lysate

Lane 2 : Mouse heart lysate

Secondary

All lanes : Goat polyclonal to rabbit IgG at 1/50000 dilution

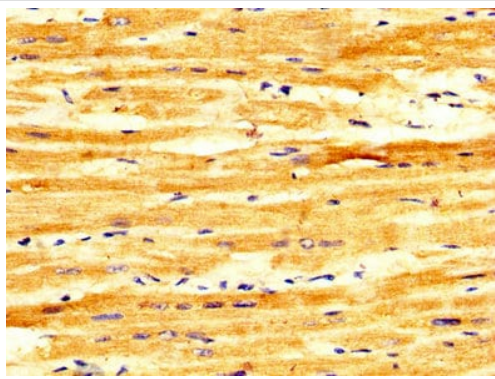
Predicted band size: 81, 75 kDa



Immunohistochemistry (Formalin/PFA-fixed paraffin-embedded sections) - Anti-FASTKD2 antibody (ab235113)

Paraffin-embedded human spleen tissue stained for FASTKD2 using ab235113 at 1/300 dilution in immunohistochemical analysis.

After dewaxing and hydration, antigen retrieval was mediated by high pressure in a citrate buffer (pH 6.0). Section was blocked with 10% normal goat serum for 30 minutes at room temperature. Primary antibody (1% BSA) was incubated at 4°C overnight. The primary antibody was detected by a biotinylated secondary antibody and visualized using a HRP conjugated SP system.



Immunohistochemistry (Formalin/PFA-fixed paraffin-embedded sections) - Anti-FASTKD2 antibody (ab235113)

Paraffin-embedded human heart tissue stained for FASTKD2 using ab235113 at 1/300 dilution in immunohistochemical analysis.

After dewaxing and hydration, antigen retrieval was mediated by high pressure in a citrate buffer (pH 6.0). Section was blocked with 10% normal goat serum for 30 minutes at room temperature. Primary antibody (1% BSA) was incubated at 4°C overnight. The primary antibody was detected by a biotinylated secondary antibody and visualized using a HRP conjugated SP system.

Please note: All products are "FOR RESEARCH USE ONLY. NOT FOR USE IN DIAGNOSTIC PROCEDURES"

Our Abpromise to you: Quality guaranteed and expert technical support

- Replacement or refund for products not performing as stated on the datasheet
- Valid for 12 months from date of delivery
- Response to your inquiry within 24 hours

- We provide support in Chinese, English, French, German, Japanese and Spanish
- Extensive multi-media technical resources to help you
- We investigate all quality concerns to ensure our products perform to the highest standards

If the product does not perform as described on this datasheet, we will offer a refund or replacement. For full details of the Abpromise, please visit <https://www.abcam.com/abpromise> or contact our technical team.

Terms and conditions

- Guarantee only valid for products bought direct from Abcam or one of our authorized distributors