

Product datasheet

Anti-FBXL16 antibody ab272898

4 Images

Overview

Product name	Anti-FBXL16 antibody
Description	Rabbit polyclonal to FBXL16
Host species	Rabbit
Tested applications	Suitable for: WB, IHC-P, ICC/IF
Species reactivity	Reacts with: Rat, Human
Immunogen	Recombinant fragment within Human FBXL16 (internal sequence). The exact sequence is proprietary. Database link: Q8N461
Positive control	ICC/IF: MCF7 cells. IHC-P: Rat brain tissue. WB: U-87 MG, SK-N-SH, IMR32, SK-N-AS cells.
General notes	<p>The Life Science industry has been in the grips of a reproducibility crisis for a number of years. Abcam is leading the way in addressing this with our range of recombinant monoclonal antibodies and knockout edited cell lines for gold-standard validation. Please check that this product meets your needs before purchasing.</p> <p>If you have any questions, special requirements or concerns, please send us an inquiry and/or contact our Support team ahead of purchase. Recommended alternatives for this product can be found below, along with publications, customer reviews and Q&As</p>

Properties

Form	Liquid
Storage instructions	Shipped at 4°C. Store at +4°C short term (1-2 weeks). Upon delivery aliquot. Store at -20°C long term. Avoid freeze / thaw cycle.
Storage buffer	pH: 7.00 Preservative: 0.01% Thimerosal (merthiolate) Constituents: 78.99% PBS, 1% BSA, 20% Glycerol (glycerin, glycerine)
Purity	Immunogen affinity purified
Clonality	Polyclonal
Isotype	IgG

Applications

The Abpromise guarantee

Our [Abpromise guarantee](#) covers the use of ab272898 in the following tested applications.

The application notes include recommended starting dilutions; optimal dilutions/concentrations should be determined by the end user.

Application	Abreviews	Notes
WB		1/500 - 1/3000.
IHC-P		1/100 - 1/1000.
ICC/IF		1/100 - 1/1000.

Target

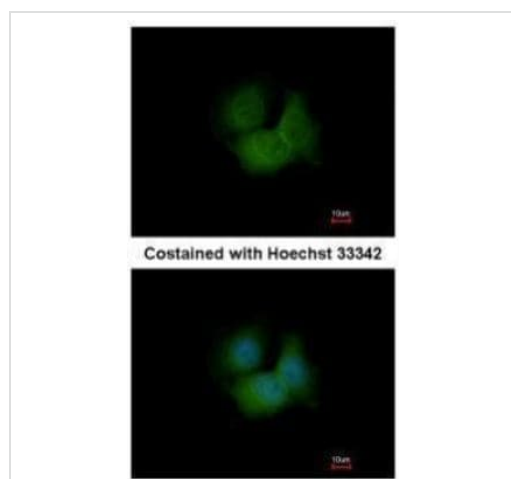
Function

Substrate-recognition component of the SCF (SKP1-CUL1-F-box protein)-type E3 ubiquitin ligase complex.

Sequence similarities

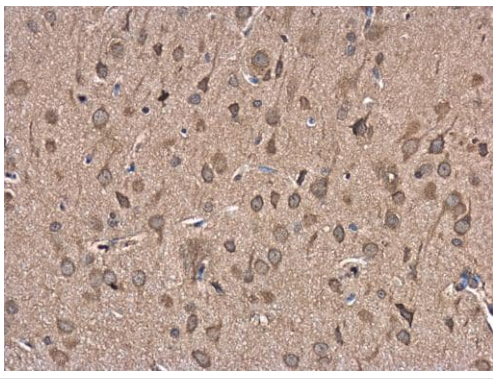
Contains 1 F-box domain.
Contains 7 LRR (leucine-rich) repeats.

Images



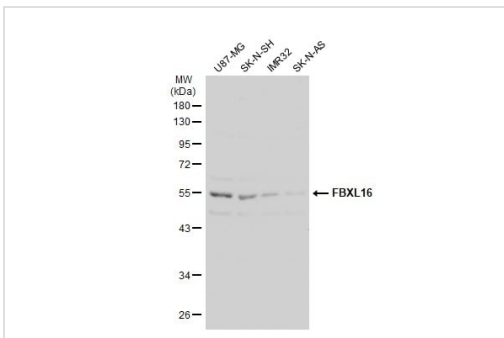
Paraformaldehyde-fixed MCF7 cells stained for FBXL16 (green) using ab272898 at 1/500 dilution in ICC/IF analysis.

Immunocytochemistry/ Immunofluorescence - Anti-FBXL16 antibody (ab272898)



Immunohistochemistry (Formalin/PFA-fixed paraffin-embedded sections) - Anti-FBXL16 antibody (ab272898)

Paraffin embedded rat brain tissue stained for FBXL16 using ab272898 at 1/500 dilution in immunohistochemical analysis. Antigen retrieval using EDTA based, pH 8.0 buffer, 15 minutes.



Western blot - Anti-FBXL16 antibody (ab272898)

All lanes : Anti-FBXL16 antibody (ab272898) at 1/1000 dilution

Lane 1 : U-87 MG cell lysate

Lane 2 : SK-N-SH cell lysate

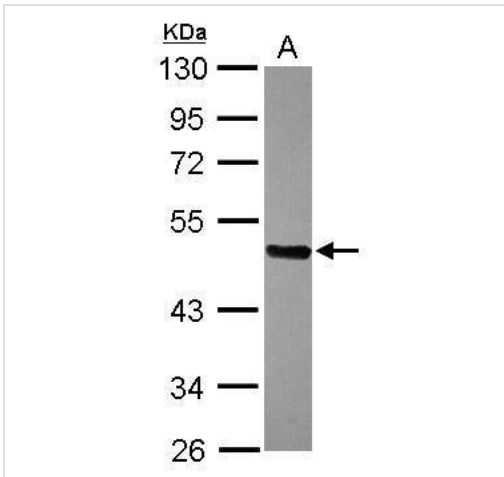
Lane 3 : IMR32 cell lysate

Lane 4 : SK-N-AS cell lysate

Lysates/proteins at 30 µg per lane.

Secondary

All lanes : HRP-conjugated anti-rabbit IgG antibody



Western blot - Anti-FBXL16 antibody (ab272898)

Anti-FBXL16 antibody (ab272898) at 1/1000 dilution + U-87 MG cell lysate at 30 µg

Please note: All products are "FOR RESEARCH USE ONLY. NOT FOR USE IN DIAGNOSTIC PROCEDURES"

Our Abpromise to you: Quality guaranteed and expert technical support

- Replacement or refund for products not performing as stated on the datasheet
- Valid for 12 months from date of delivery
- Response to your inquiry within 24 hours

- We provide support in Chinese, English, French, German, Japanese and Spanish
- Extensive multi-media technical resources to help you
- We investigate all quality concerns to ensure our products perform to the highest standards

If the product does not perform as described on this datasheet, we will offer a refund or replacement. For full details of the Abpromise, please visit <https://www.abcam.com/abpromise> or contact our technical team.

Terms and conditions

- Guarantee only valid for products bought direct from Abcam or one of our authorized distributors