

Product datasheet

Anti-Fc epsilon RI/FCER1A antibody [AER-37 (CRA1)], prediluted (Allophycocyanin) ab155369

1 Image

Overview

Product name	Anti-Fc epsilon RI/FCER1A antibody [AER-37 (CRA1)], prediluted (Allophycocyanin)
Description	Mouse monoclonal [AER-37 (CRA1)] to Fc epsilon RI/FCER1A, prediluted (Allophycocyanin)
Host species	Mouse
Conjugation	Allophycocyanin. Ex: 645nm, Em: 660nm
Tested applications	Suitable for: Flow Cyt
Species reactivity	Reacts with: Human
Immunogen	The details of the immunogen for this antibody are not available.
Positive control	Normal Human peripheral blood cells.
General notes	This product was previously labelled as Fc epsilon RI

Properties

Form	Prediluted
Storage instructions	Shipped at 4°C. Store at +4°C.
Storage buffer	pH: 7.20 Preservative: 0.09% Sodium azide Constituents: 99% PBS, 0.2% BSA
Purity	Protein G purified
Clonality	Monoclonal
Clone number	AER-37 (CRA1)
Isotype	IgG2b
Light chain type	kappa

Applications

Our [Abpromise guarantee](#) covers the use of **ab155369** in the following tested applications.

The application notes include recommended starting dilutions; optimal dilutions/concentrations should be determined by the end user.

Application	Abreviews	Notes
Flow Cyt		Use 5µl for 10 ⁶ cells. ab91534 -Mouse monoclonal IgG2b, is suitable for use as an isotype control with this antibody.

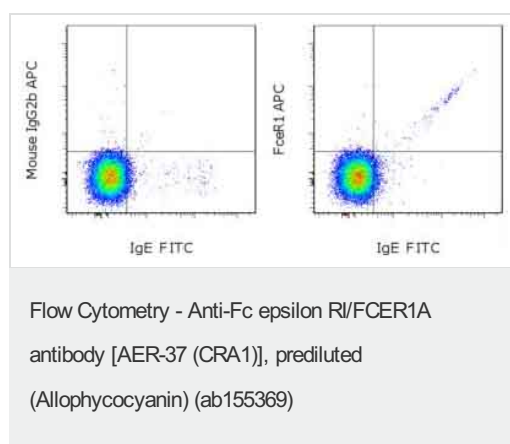
Target

Function Binds to the Fc region of immunoglobulins epsilon. High affinity receptor. Responsible for initiating the allergic response. Binding of allergen to receptor-bound IgE leads to cell activation and the release of mediators (such as histamine) responsible for the manifestations of allergy. The same receptor also induces the secretion of important lymphokines.

Sequence similarities Contains 2 Ig-like (immunoglobulin-like) domains.

Cellular localization Cell membrane.

Images



Flow cytometric analysis of normal Human peripheral blood cells with Anti-Human IgE FITC and mouse IgG2b kappa Isotype Control APC (left) or ab155369 (right). Cells in the lymphocyte gate were used for analysis (note: basophils reside in FCS/SSC position of lymphocytes).

Please note: All products are "FOR RESEARCH USE ONLY AND ARE NOT INTENDED FOR DIAGNOSTIC OR THERAPEUTIC USE"

Our Abpromise to you: Quality guaranteed and expert technical support

- Replacement or refund for products not performing as stated on the datasheet
- Valid for 12 months from date of delivery
- Response to your inquiry within 24 hours
- We provide support in Chinese, English, French, German, Japanese and Spanish
- Extensive multi-media technical resources to help you
- We investigate all quality concerns to ensure our products perform to the highest standards

If the product does not perform as described on this datasheet, we will offer a refund or replacement. For full details of the Abpromise, please visit <https://www.abcam.com/abpromise> or contact our technical team.

Terms and conditions

- Guarantee only valid for products bought direct from Abcam or one of our authorized distributors