

Product datasheet

Anti-FCRL6 antibody ab234711

2 Images

Overview

Product name	Anti-FCRL6 antibody
Description	Rabbit polyclonal to FCRL6
Host species	Rabbit
Tested applications	Suitable for: IHC-P
Species reactivity	Reacts with: Human
Immunogen	<p>Recombinant fragment corresponding to Human FCRL6 aa 20-307. Extracellular domain Sequence:</p> <p>LYLQAWPNPVEGDALTLRCQGWKNTPLSQVKFYRDGKF LHFSKENQTLS MGAATVQSRGQYSCSGQVMYIPQFTQTSETAMVQVQEL FPPPVLSAIPS PEPREGSLVTLRCQTKLHPLRSALRLLFSFHKDGHTLQDR GPHPELCIPG AKEGDSGLYWCEVAPEGGQVQKQSPQLEVRVQAPVSR PVLTLHHGPADPA VGDMVQLLCEAQRGSPPILYSFYLDEKIVGNHSAPCGGT SLLFPVKSEQ DAGNYSCEAENSVSRERSEPKKLSLKGSQLFTPASNW</p>

Database link: [Q6DN72](#)

 [Run BLAST with](#)

 [Run BLAST with](#)

Positive control IHC-P: Human ovarian cancer and placenta tissue.

General notes

Reproducibility is key to advancing scientific discovery and accelerating scientists' next breakthrough.

Abcam is leading the way with our range of recombinant antibodies, knockout-validated antibodies and knockout cell lines, all of which support improved reproducibility.

We are also planning to innovate the way in which we present recommended applications and species on our product datasheets, so that only applications & species that have been tested in our own labs, our suppliers or by selected trusted collaborators are covered by our Abpromise™ guarantee.

In preparation for this, we have started to update the applications & species that this product is Abpromise guaranteed for.

We are also updating the applications & species that this product has been "predicted to work

with," however this information is not covered by our Abpromise guarantee.

Applications & species from publications and Abreviews that have not been tested in our own labs or in those of our suppliers are not covered by the Abpromise guarantee.

Please check that this product meets your needs before purchasing. If you have any questions, special requirements or concerns, please send us an inquiry and/or contact our Support team ahead of purchase. Recommended alternatives for this product can be found below, as well as customer reviews and Q&As.

Properties

Form	Liquid
Storage instructions	Shipped at 4°C. Store at +4°C short term (1-2 weeks). Upon delivery aliquot. Store at -20°C long term. Avoid freeze / thaw cycle.
Storage buffer	pH: 7.30 Preservative: 0.02% Sodium azide Constituents: PBS, 50% Glycerol (glycerin, glycerine)
Purity	Immunogen affinity purified
Clonality	Polyclonal
Isotype	IgG

Applications

Our [Abpromise guarantee](#) covers the use of **ab234711** in the following tested applications.

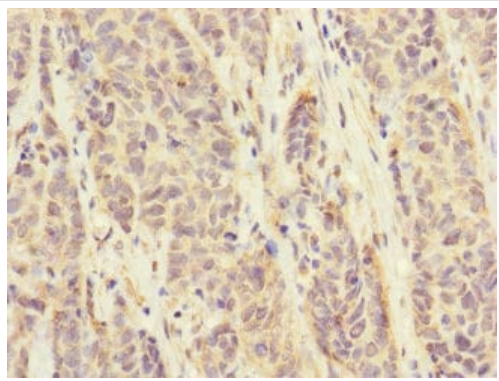
The application notes include recommended starting dilutions; optimal dilutions/concentrations should be determined by the end user.

Application	Abreviews	Notes
IHC-P		1/20 - 1/200.

Target

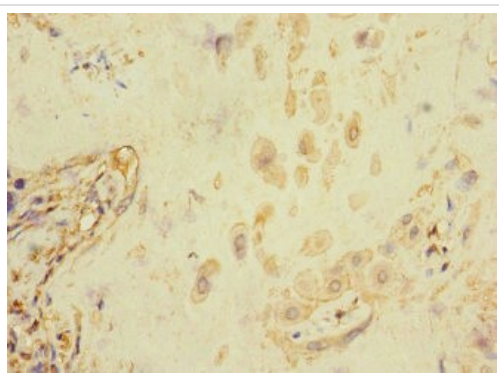
Tissue specificity	Expressed by cytolytic cells including NK cells, effector and effector-memory CD8+ T-cells. Expression among T-cells is greatly expanded in HIV-1 infected individuals, and includes not only effector and effector-memory CD8+ T-cells but also populations of CD4+ T-cells.
Sequence similarities	Contains 3 Ig-like C2-type (immunoglobulin-like) domains.
Domain	Contains 1 copy of a cytoplasmic motif that is referred to as the immunoreceptor tyrosine-based inhibitor motif (ITIM). The phosphorylated ITIM motif is involved in PTPN11 binding.
Post-translational modifications	Phosphorylated on Tyr residue, inducing association with PTPN11.
Cellular localization	Membrane.

Images



Immunohistochemistry (Formalin/PFA-fixed paraffin-embedded sections) - Anti-FCRL6 antibody (ab234711)

Paraffin-embedded human ovarian cancer tissue stained for FCRL6 using ab234711 at 1/100 dilution in immunohistochemical analysis.



Immunohistochemistry (Formalin/PFA-fixed paraffin-embedded sections) - Anti-FCRL6 antibody (ab234711)

Paraffin-embedded human placenta tissue stained for FCRL6 using ab234711 at 1/100 dilution in immunohistochemical analysis.

Please note: All products are "FOR RESEARCH USE ONLY. NOT FOR USE IN DIAGNOSTIC PROCEDURES"

Our Abpromise to you: Quality guaranteed and expert technical support

- Replacement or refund for products not performing as stated on the datasheet
- Valid for 12 months from date of delivery
- Response to your inquiry within 24 hours
- We provide support in Chinese, English, French, German, Japanese and Spanish
- Extensive multi-media technical resources to help you
- We investigate all quality concerns to ensure our products perform to the highest standards

If the product does not perform as described on this datasheet, we will offer a refund or replacement. For full details of the Abpromise, please visit <https://www.abcam.com/abpromise> or contact our technical team.

Terms and conditions

- Guarantee only valid for products bought direct from Abcam or one of our authorized distributors