




Product datasheet

Anti-FDFT1 antibody ab236675

3 Images

Overview

Product name	Anti-FDFT1 antibody
Description	Rabbit polyclonal to FDFT1
Host species	Rabbit
Tested applications	Suitable for: IHC-P, WB, ICC/IF
Species reactivity	Reacts with: Human Predicted to work with: Cow, Orangutan 
Immunogen	Recombinant full length protein corresponding to Human FDFT1 aa 2-417. Sequence: EFVKCLGHPEEFYNLVRFRIGGKRKVMPKMDQDSLSSSL KTCYKYLNQTS RSFAAVIQALDGEMRNAVCIFYLVLRALDTLEDDMTISVEK KVPLLNHFH SFLYQPDWRFMESKEKDRQVLEDFPTISLEFRNLAEKYQT VIADICRRMG IGMAEFLDKHVTSEQEWDKYCHYVAGLVGIGLSRLFSASE FEDPLVGEDT ERANSMGLFLQKTNIIRDYLEDDQGGREFWPQEVWSRY KKLGDFAKPEN IDLAVQCLNELITNALHHIPDVITYLSRLRNQSVFNCAIPQV MAIATLA ACYNNQQVFKGAVKIRKGGQAVTLMMDATNMPAVKAIYQY MEEIYHRIPD SDPSSSKTRQIISTIRTQNLPCQLISRSHYSPYLSFVMLLA ALSWQYL TTLSQVTEDYVQTGEH Database link: P37268  Run BLAST with  Run BLAST with
Positive control	WB: HepG2, SH-SY5Y and HEK-293 cell lysate. IHC-P: Human adrenal gland tissue. ICC/IF: HepG2 cells.
General notes	Reproducibility is key to advancing scientific discovery and accelerating scientists' next breakthrough. Abcam is leading the way with our range of recombinant antibodies, knockout-validated antibodies and knockout cell lines, all of which support improved reproducibility.

We are also planning to innovate the way in which we present recommended applications and species on our product datasheets, so that only applications & species that have been tested in our own labs, our suppliers or by selected trusted collaborators are covered by our Abpromise™ guarantee.

In preparation for this, we have started to update the applications & species that this product is Abpromise guaranteed for.

We are also updating the applications & species that this product has been “predicted to work with,” however this information is not covered by our Abpromise guarantee.

Applications & species from publications and Abreviews that have not been tested in our own labs or in those of our suppliers are not covered by the Abpromise guarantee.

Please check that this product meets your needs before purchasing. If you have any questions, special requirements or concerns, please send us an inquiry and/or contact our Support team ahead of purchase. Recommended alternatives for this product can be found below, as well as customer reviews and Q&As.

Properties

Form	Liquid
Storage instructions	Shipped at 4°C. Store at +4°C short term (1-2 weeks). Upon delivery aliquot. Store at -20°C long term. Avoid freeze / thaw cycle.
Storage buffer	pH: 7.40 Constituents: PBS, 50% Glycerol (glycerin, glycerine), 0.03% Proclin 300
Purity	Protein G purified
Purification notes	Purity >95%.
Clonality	Polyclonal
Isotype	IgG

Applications

Our [Abpromise guarantee](#) covers the use of **ab236675** in the following tested applications.

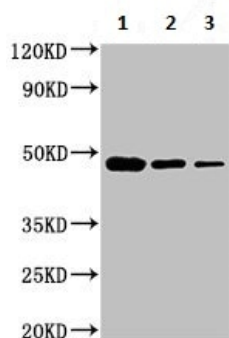
The application notes include recommended starting dilutions; optimal dilutions/concentrations should be determined by the end user.

Application	Abreviews	Notes
IHC-P		1/20 - 1/200.
WB		1/500 - 1/5000. Predicted molecular weight: 48 kDa.
ICC/IF		1/50 - 1/200.

Target

Pathway	Terpene metabolism; lanosterol biosynthesis; lanosterol from farnesyl diphosphate: step 1/3.
Sequence similarities	Belongs to the phytoene/squalene synthase family.

Images



Western blot - Anti-FDFT1 antibody (ab236675)

All lanes : Anti-FDFT1 antibody (ab236675) at 1/500 dilution

Lane 1 : HepG2 (human liver hepatocellular carcinoma cell line) cell lysate

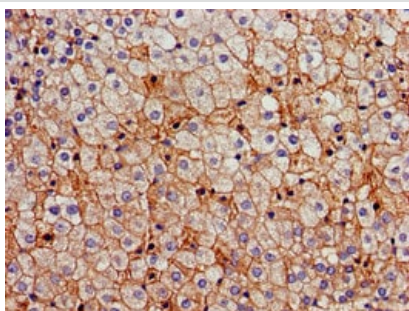
Lane 2 : SH-SY5Y (human neuroblastoma cell line from bone marrow) cell lysate

Lane 3 : HEK-293 (human epithelial cell line from embryonic kidney) cell lysate

Secondary

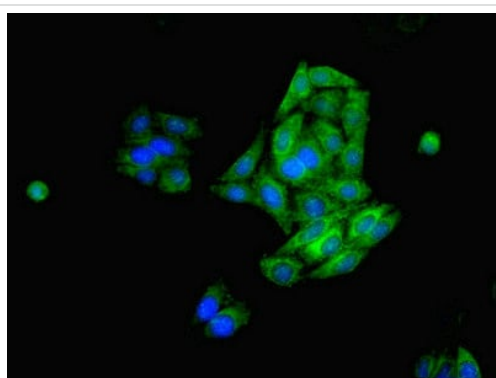
All lanes : Goat polyclonal to rabbit IgG at 1/50000 dilution

Predicted band size: 48 kDa



Immunohistochemistry (Formalin/PFA-fixed paraffin-embedded sections) - Anti-FDFT1 antibody (ab236675)

Paraffin-embedded human adrenal gland tissue stained for FDFT1 using ab236675 at 1/100 dilution in immunohistochemical analysis.



Immunocytochemistry/ Immunofluorescence - Anti-FDFT1 antibody (ab236675)

HepG2 (human liver hepatocellular carcinoma cell line) cells labeling FDFT1 using ab236675 at 1/100 dilution in ICC/IF. Secondary antibody was Alexa Fluor[®] 488-conjugated goat anti-rabbit IgG (H+L).

Please note: All products are "FOR RESEARCH USE ONLY. NOT FOR USE IN DIAGNOSTIC PROCEDURES"

Our Abpromise to you: Quality guaranteed and expert technical support

- Replacement or refund for products not performing as stated on the datasheet
- Valid for 12 months from date of delivery
- Response to your inquiry within 24 hours

- We provide support in Chinese, English, French, German, Japanese and Spanish
- Extensive multi-media technical resources to help you
- We investigate all quality concerns to ensure our products perform to the highest standards

If the product does not perform as described on this datasheet, we will offer a refund or replacement. For full details of the Abpromise, please visit <https://www.abcam.com/abpromise> or contact our technical team.

Terms and conditions

- Guarantee only valid for products bought direct from Abcam or one of our authorized distributors