



Product datasheet

Anti-Ferritin Heavy Chain antibody ab231210

2 Images

Overview

Product name	Anti-Ferritin Heavy Chain antibody
Description	Rabbit polyclonal to Ferritin Heavy Chain
Host species	Rabbit
Tested applications	Suitable for: WB
Species reactivity	Reacts with: Sheep
Immunogen	<p>Recombinant full length protein (His-tag) corresponding to Sheep Ferritin Heavy Chain aa 1-171. Expressed in E. coli. N-terminal tag. Sequence:</p> <p>MTTASPSQVRQNYHQDSEAAINRQINLELYASYVYLSM SYYFDRDDVALK NFAKYFLHQSHEEREHAERLMKLNQQRGARIFLQDIKK PDRDDWENGLNA MECALCLERSVNQSLLELHKLATEKNDPHLCDFIETHY LNEQVEAIKELG DHITNLRKMGALWIGHGRVPL</p> <p>Database link: P18685</p> <p style="text-align: right;"> Run BLAST with  Run BLAST with</p>
Positive control	WB: Recombinant sheep Ferritin Heavy Chain protein; Sheep cerebrum, kidney and liver lysate.

Properties

Form	Liquid
Storage instructions	Shipped at 4°C. Store at +4°C short term (1-2 weeks). Upon delivery aliquot. Store at -20°C long term. Avoid freeze / thaw cycle.
Storage buffer	<p>pH: 7.4 Preservative: 0.02% Sodium azide Constituents: PBS, 50% Glycerol</p>
Purity	Immunogen affinity purified
Purification notes	Antigen-specific affinity chromatography followed by Protein A affinity chromatography
Clonality	Polyclonal
Isotype	IgG

Applications

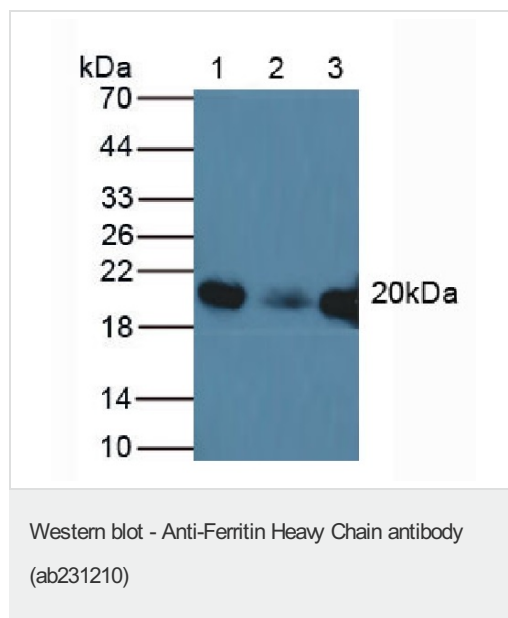
Our [Abpromise guarantee](#) covers the use of **ab231210** in the following tested applications.

The application notes include recommended starting dilutions; optimal dilutions/concentrations should be determined by the end user.

Application	Abreviews	Notes
WB		Use a concentration of 0.2 - 2 µg/ml. Predicted molecular weight: 20 kDa.

Target

Images



All lanes : Anti-Ferritin Heavy Chain antibody (ab231210) at 2 µg/ml

Lane 1 : Sheep liver tissue lysate

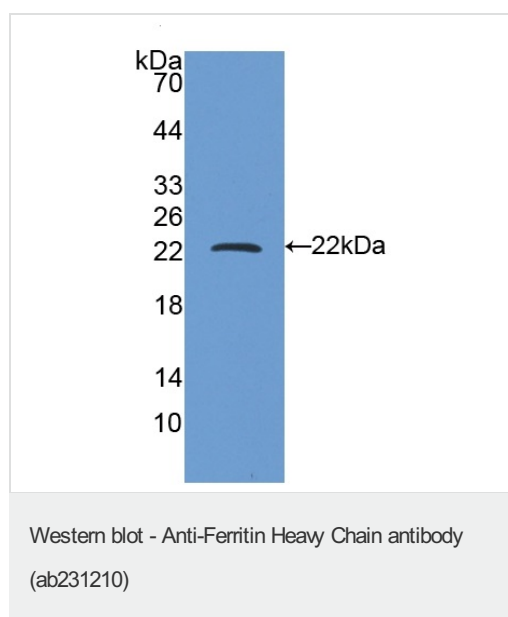
Lane 2 : Sheep cerebrum tissue lysate

Lane 3 : Sheep kidney tissue lysate

Secondary

All lanes : HRP-linked Guinea pig Anti-Rabbit at 1/1000 dilution

Predicted band size: 20 kDa



Anti-Ferritin Heavy Chain antibody (ab231210) at 2 µg/ml +
Recombinant sheep Ferritin Heavy Chain protein

Predicted band size: 20 kDa

Please note: All products are "FOR RESEARCH USE ONLY. NOT FOR USE IN DIAGNOSTIC PROCEDURES"

Our Abpromise to you: Quality guaranteed and expert technical support

- Replacement or refund for products not performing as stated on the datasheet
- Valid for 12 months from date of delivery
- Response to your inquiry within 24 hours

- We provide support in Chinese, English, French, German, Japanese and Spanish
- Extensive multi-media technical resources to help you
- We investigate all quality concerns to ensure our products perform to the highest standards

If the product does not perform as described on this datasheet, we will offer a refund or replacement. For full details of the Abpromise, please visit <https://www.abcam.com/abpromise> or contact our technical team.

Terms and conditions

- Guarantee only valid for products bought direct from Abcam or one of our authorized distributors