

Product datasheet

Anti-Ferritin Heavy Chain antibody ab65080

★★★★★ 3 Abreviews 31 References 4 Images

Overview

Product name	Anti-Ferritin Heavy Chain antibody
Description	Rabbit polyclonal to Ferritin Heavy Chain
Host species	Rabbit
Tested applications	Suitable for: WB, IHC-P, ICC/IF
Species reactivity	Reacts with: Human Predicted to work with: Mouse, Sheep, Goat, Cow, Cat, Dog, Orngutan
Immunogen	Synthetic peptide corresponding to Human Ferritin Heavy Chain aa 1-100 (N terminal) conjugated to keyhole limpet haemocyanin. Database link: P02794 (Peptide available as ab90631)
Positive control	Recombinant Human Ferritin Heavy Chain protein (ab78877) can be used as a positive control in WB. This antibody gave a positive signal in Human Liver Tissue Lysate. IF/ICC: MCF7 cell line. IHC-P: FFPE human normal liver tissue sections.
General notes	<p>Reproducibility is key to advancing scientific discovery and accelerating scientists' next breakthrough.</p> <p>Abcam is leading the way with our range of recombinant antibodies, knockout-validated antibodies and knockout cell lines, all of which support improved reproducibility.</p> <p>We are also planning to innovate the way in which we present recommended applications and species on our product datasheets, so that only applications & species that have been tested in our own labs, our suppliers or by selected trusted collaborators are covered by our Abpromise™ guarantee.</p> <p>In preparation for this, we have started to update the applications & species that this product is Abpromise guaranteed for.</p> <p>We are also updating the applications & species that this product has been “predicted to work with,” however this information is not covered by our Abpromise guarantee.</p> <p>Applications & species from publications and Abreviews that have not been tested in our own labs or in those of our suppliers are not covered by the Abpromise guarantee.</p> <p>Please check that this product meets your needs before purchasing. If you have any questions, special requirements or concerns, please send us an inquiry and/or contact our Support team ahead of purchase. Recommended alternatives for this product can be found below, as well as customer reviews and Q&As.</p>

Properties

Form	Liquid
Storage instructions	Shipped at 4°C. Store at +4°C short term (1-2 weeks). Upon delivery aliquot. Store at -20°C or -80°C. Avoid freeze / thaw cycle.
Storage buffer	pH: 7.40 Preservative: 0.02% Sodium azide Constituent: PBS Batches of this product that have a concentration < 1mg/ml may have BSA added as a stabilising agent. If you would like information about the formulation of a specific lot, please contact our scientific support team who will be happy to help.
Purity	Immunogen affinity purified
Clonality	Polyclonal
Isotype	IgG

Applications

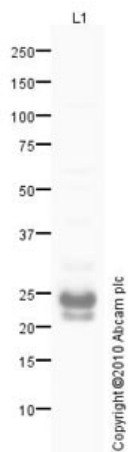
Our [Abpromise guarantee](#) covers the use of **ab65080** in the following tested applications.

The application notes include recommended starting dilutions; optimal dilutions/concentrations should be determined by the end user.

Application	Abreviews	Notes
WB		Use a concentration of 1 µg/ml. Detects a band of approximately 21 kDa (predicted molecular weight: 21 kDa).
IHC-P		Use a concentration of 5 µg/ml.
ICC/IF		Use a concentration of 5 µg/ml.

Target

Images



Western blot - Anti-Ferritin Heavy Chain antibody (ab65080)

Anti-Ferritin Heavy Chain antibody (ab65080) at 1 µg/ml + Human liver tissue lysate - total protein (ab29889) at 10 µg

Secondary

Goat polyclonal to Rabbit IgG - H&L - Pre-Adsorbed (HRP) at 1/3000 dilution

Developed using the ECL technique.

Performed under reducing conditions.

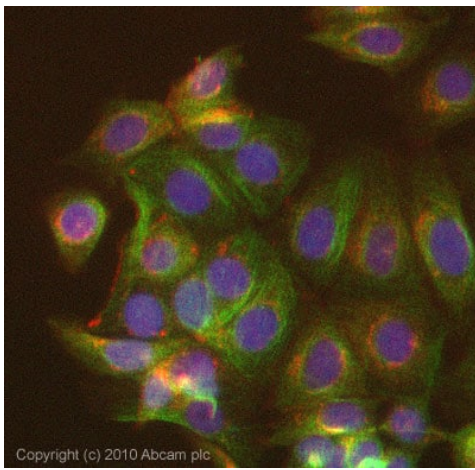
Predicted band size: 21 kDa

Observed band size: 21 kDa

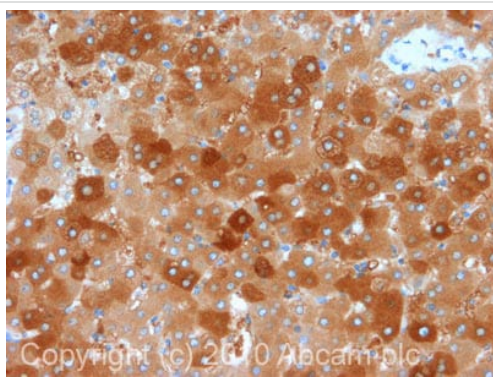
Additional bands at: 24 kDa (possible post-translational modification)

Exposure time: 3 minutes

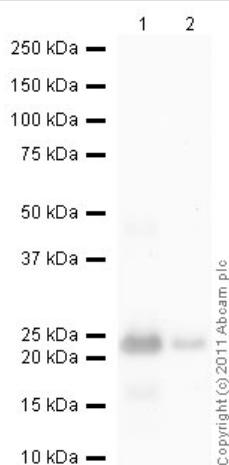
Ferritin Heavy Chain contains a number of potential phosphorylation sites (SwissProt data) which may explain it running at a slightly higher than predicted molecular weight (24 kDa).



Immunocytochemistry/ Immunofluorescence - Anti-Ferritin Heavy Chain antibody (ab65080)



Immunohistochemistry (Formalin/PFA-fixed paraffin-embedded sections) - Anti-Ferritin Heavy Chain antibody (ab65080)



Western blot - Anti-Ferritin Heavy Chain antibody (ab65080)

ICC/IF image of ab65080 stained MCF-7 cells. The cells were 4% PFA fixed (10 min) and then incubated in 1%BSA / 10% normal Goat serum / 0.3M glycine in 0.1% PBS-Tween for 1h to permeabilise the cells and block non-specific protein-protein interactions. The cells were then incubated with the antibody (ab65080, 5µg/ml) overnight at +4°C. The secondary antibody (green) was Alexa Fluor® 488 Goat anti-Rabbit IgG (H+L) used at a 1/1000 dilution for 1h. Alexa Fluor® 594 WGA was used to label plasma membranes (red) at a 1/200 dilution for 1h. DAPI was used to stain the cell nuclei (blue) at a concentration of 1.43µM.

IHC image of ab65080 staining in Human Normal Liver formalin fixed paraffin embedded tissue section, performed on a Leica Bond™ system. The section was pre-treated using heat mediated antigen retrieval with sodium citrate buffer (pH6, epitope retrieval solution 1) for 20 mins. The section was then incubated with ab65080, 5µg/ml, for 15 mins at room temperature and detected using an HRP conjugated compact polymer system. DAB was used as the chromogen. The section was then counterstained with haematoxylin and mounted with DPX.

For other IHC staining systems (automated and non-automated) customers should optimize variable parameters such as antigen retrieval conditions, primary antibody concentration and antibody incubation times.

All lanes : Anti-Ferritin Heavy Chain antibody (ab65080) at 1 µg/ml

Lane 1 : Recombinant Human Ferritin Heavy Chain protein (ab78877) at 0.1 µg

Lane 2 : Recombinant Human Ferritin Heavy Chain protein (ab78877) at 0.01 µg

Secondary

All lanes : Goat Anti-Rabbit IgG H&L (HRP) preadsorbed (ab97080) at 1/5000 dilution

Developed using the ECL technique.

Performed under reducing conditions.

Predicted band size: 21 kDa

Exposure time: 30 seconds

Please note: All products are "FOR RESEARCH USE ONLY. NOT FOR USE IN DIAGNOSTIC PROCEDURES"

Our Abpromise to you: Quality guaranteed and expert technical support

- Replacement or refund for products not performing as stated on the datasheet
- Valid for 12 months from date of delivery
- Response to your inquiry within 24 hours

- We provide support in Chinese, English, French, German, Japanese and Spanish
- Extensive multi-media technical resources to help you
- We investigate all quality concerns to ensure our products perform to the highest standards

If the product does not perform as described on this datasheet, we will offer a refund or replacement. For full details of the Abpromise, please visit <https://www.abcam.com/abpromise> or contact our technical team.

Terms and conditions

- Guarantee only valid for products bought direct from Abcam or one of our authorized distributors