




Product datasheet

Anti-Ferritin Heavy Chain antibody - C-terminal ab194947

3 Images

Overview

Product name	Anti-Ferritin Heavy Chain antibody - C-terminal
Description	Rabbit polyclonal to Ferritin Heavy Chain - C-terminal
Host species	Rabbit
Tested applications	Suitable for: IHC-P, WB, Flow Cyt
Species reactivity	Reacts with: Human Predicted to work with: Rat, Rabbit, Chicken, Cat, Dog, Orngutan 
Immunogen	Synthetic peptide corresponding to Human Ferritin Heavy Chain aa 154-183 (C terminal) conjugated to Keyhole Limpet Haemocyanin (KLH). NCBI Accession No. NP_002023.2. Sequence: TNLRKMGAPESGLAEYLFDKHTLGSDNES Database link: P02794  Run BLAST with  Run BLAST with
Positive control	Human liver tissue; HepG2 cells; A2058 cell lysate.

Properties

Form	Liquid
Storage instructions	Shipped at 4°C. Store at +4°C short term (1-2 weeks). Upon delivery aliquot. Store at -20°C long term. Avoid freeze / thaw cycle.
Storage buffer	Preservative: 0.09% Sodium azide Constituent: 99% PBS
Purity	Immunogen affinity purified
Clonality	Polyclonal
Isotype	IgG

Applications

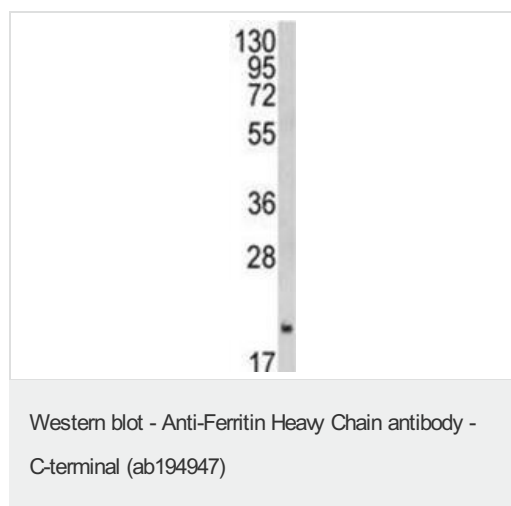
Our [Abpromise guarantee](#) covers the use of **ab194947** in the following tested applications.

The application notes include recommended starting dilutions; optimal dilutions/concentrations should be determined by the end user.

Application	Abreviews	Notes
IHC-P		1/100.
WB		1/1000. Predicted molecular weight: 21 kDa.
Flow Cyt		1/10 - 1/50. ab171870 - Rabbit polyclonal IgG, is suitable for use as an isotype control with this antibody.

Target

Images

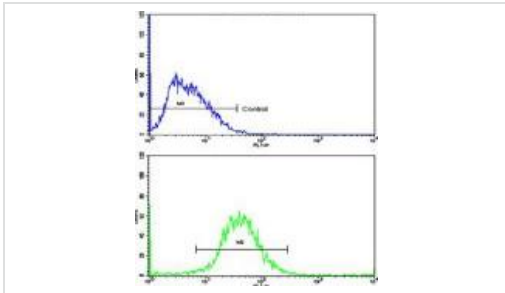


Anti-Ferritin Heavy Chain antibody - C-terminal (ab194947) at 1/1000 dilution + A2058 cell lysate at 35 µg

Predicted band size: 21 kDa



Immunohistochemical analysis of formalin-fixed, paraffin-embedded Human liver tissue, labeling Ferritin Heavy Chain using ab194947 at a 1/100 dilution.



Flow Cytometry - Anti-Ferritin Heavy Chain antibody
- C-terminal (ab194947)

Flow cytometry analysis of HepG2 cells labeling Ferritin Heavy Chain (bottom histogram), using ab194947 at a 1/10 dilution, and negative control cells (top histogram). FITC-conjugated Goat anti-Rabbit secondary antibodies were used for the analysis.

Please note: All products are "FOR RESEARCH USE ONLY. NOT FOR USE IN DIAGNOSTIC PROCEDURES"

Our Abpromise to you: Quality guaranteed and expert technical support

- Replacement or refund for products not performing as stated on the datasheet
- Valid for 12 months from date of delivery
- Response to your inquiry within 24 hours
- We provide support in Chinese, English, French, German, Japanese and Spanish
- Extensive multi-media technical resources to help you
- We investigate all quality concerns to ensure our products perform to the highest standards

If the product does not perform as described on this datasheet, we will offer a refund or replacement. For full details of the Abpromise, please visit <https://www.abcam.com/abpromise> or contact our technical team.

Terms and conditions

- Guarantee only valid for products bought direct from Abcam or one of our authorized distributors