

## Product datasheet

# Anti-Ferritin Light Chain antibody [8E1E7] ab201975

6 Images

### Overview

<b>Product name</b>	Anti-Ferritin Light Chain antibody [8E1E7]
<b>Description</b>	Mouse monoclonal [8E1E7] to Ferritin Light Chain
<b>Host species</b>	Mouse
<b>Tested applications</b>	<b>Suitable for:</b> IHC-P, WB, ICC/IF
<b>Species reactivity</b>	<b>Reacts with:</b> Human
<b>Immunogen</b>	Full length protein corresponding to Human Ferritin Light Chain. Database link: <a href="#">P02792</a>
<b>Positive control</b>	Recombinant Ferritin Light Chain protein, Ferritin Light Chain transfected HEK293 cell lysate, K562 cell lysate, A431 cells. Human liver cancer tissue and esophageal tissue.

### Properties

<b>Form</b>	Liquid
<b>Storage instructions</b>	Shipped at 4°C. Store at +4°C short term (1-2 weeks). Upon delivery aliquot. Store at -20°C long term. Avoid freeze / thaw cycle.
<b>Storage buffer</b>	Preservative: 0.05% Sodium azide Constituent: 99% PBS
<b>Purity</b>	Protein G purified
<b>Purification notes</b>	Purified from tissue culture supernatant.
<b>Clonality</b>	Monoclonal
<b>Clone number</b>	8E1E7
<b>Isotype</b>	IgG1

### Applications

Our [Abpromise guarantee](#) covers the use of **ab201975** in the following tested applications.

The application notes include recommended starting dilutions; optimal dilutions/concentrations should be determined by the end user.

Application	Abreviews	Notes
IHC-P		1/200 - 1/1000.
WB		1/500 - 1/2000. Predicted molecular weight: 20 kDa.
ICC/IF		1/200 - 1/1000.

## Target

### Function

Stores iron in a soluble, non-toxic, readily available form. Important for iron homeostasis. Iron is taken up in the ferrous form and deposited as ferric hydroxides after oxidation. Also plays a role in delivery of iron to cells. Mediates iron uptake in capsule cells of the developing kidney.

### Involvement in disease

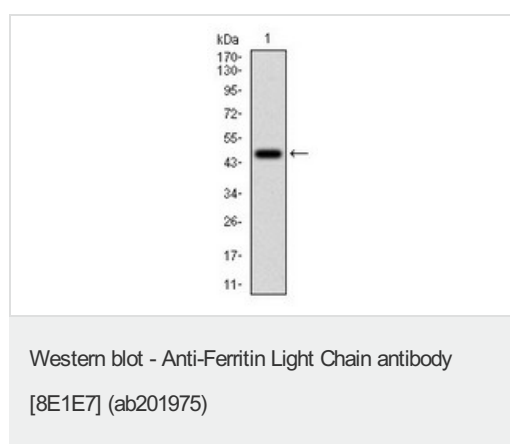
Defects in FTL are the cause of hereditary hyperferritinemia-cataract syndrome (HHCS) [MIM:600886]. It is an autosomal dominant disease characterized by early-onset bilateral cataract. Affected patients have elevated level of circulating ferritin. HHCS is caused by mutations in the iron responsive element (IRE) of the FTL gene.

Defects in FTL are the cause of neurodegeneration with brain iron accumulation type 3 (NBIA3) [MIM:606159]; also known as adult-onset basal ganglia disease. It is a movement disorder with heterogeneous presentations starting in the fourth to sixth decade. It is characterized by a variety of neurological signs including parkinsonism, ataxia, corticospinal signs, mild nonprogressive cognitive deficit and episodic psychosis. It is linked with decreased serum ferritin levels.

### Sequence similarities

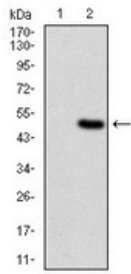
Belongs to the ferritin family.  
Contains 1 ferritin-like diiron domain.

## Images



Anti-Ferritin Light Chain antibody [8E1E7] (ab201975) at 1/500 dilution + recombinant human Ferritin Light Chain protein

**Predicted band size:** 20 kDa



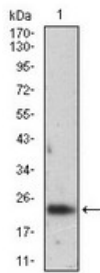
Western blot - Anti-Ferritin Light Chain antibody [8E1E7] (ab201975)

**All lanes** : Anti-Ferritin Light Chain antibody [8E1E7] (ab201975) at 1/500 dilution

**Lane 1** : HEK293 cell lysate

**Lane 2** : Ferritin Light Chain transfected HEK293 cell lysate

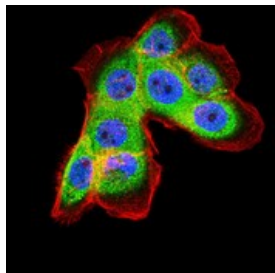
**Predicted band size:** 20 kDa



Western blot - Anti-Ferritin Light Chain antibody [8E1E7] (ab201975)

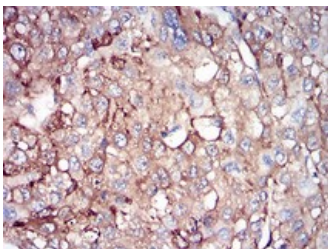
Anti-Ferritin Light Chain antibody [8E1E7] (ab201975) at 1/500 dilution + K562 cell lysate

**Predicted band size:** 20 kDa



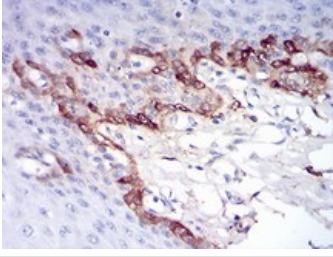
Immunocytochemistry/ Immunofluorescence - Anti-Ferritin Light Chain antibody [8E1E7] (ab201975)

Immunofluorescence analysis of A431 cells labeling Ferritin Light Chain using ab201975 at 1/200 dilution. Blue: DRAQ5 fluorescent DNA dye. Red: Actin filaments have been labeled with Alexa Fluor-555 phalloidin.



Immunohistochemistry (Formalin/PFA-fixed paraffin-embedded sections) - Anti-Ferritin Light Chain antibody [8E1E7] (ab201975)

Immunohistochemical analysis of paraffin-embedded Human liver cancer tissues labeling Ferritin Light Chain using ab201975 at 1/200 dilution with DAB staining.



Immunohistochemical analysis of paraffin-embedded Human esophageal tissue labeling Ferritin Light Chain with ab201975 at 1/200 dilution with DAB staining

Immunohistochemistry (Formalin/PFA-fixed paraffin-embedded sections) - Anti-Ferritin Light Chain antibody [8E1E7] (ab201975)

**Please note:** All products are "FOR RESEARCH USE ONLY. NOT FOR USE IN DIAGNOSTIC PROCEDURES"

### **Our Abpromise to you: Quality guaranteed and expert technical support**

---

- Replacement or refund for products not performing as stated on the datasheet
- Valid for 12 months from date of delivery
- Response to your inquiry within 24 hours
- We provide support in Chinese, English, French, German, Japanese and Spanish
- Extensive multi-media technical resources to help you
- We investigate all quality concerns to ensure our products perform to the highest standards

If the product does not perform as described on this datasheet, we will offer a refund or replacement. For full details of the Abpromise, please visit <https://www.abcam.com/abpromise> or contact our technical team.

### **Terms and conditions**

---

- Guarantee only valid for products bought direct from Abcam or one of our authorized distributors