

Product datasheet

Anti-Ferritin Light Chain antibody ab232752

8 Images

Overview

Product name	Anti-Ferritin Light Chain antibody
Description	Rabbit polyclonal to Ferritin Light Chain
Host species	Rabbit
Tested applications	Suitable for: IHC-P, WB
Species reactivity	Reacts with: Human, Pig Predicted to work with: Orangutan 
Immunogen	<p>Recombinant full length protein (His-T7-tag) corresponding to Human Ferritin Light Chain aa 2-175. Two N-terminal tags, (Expressed in E.coli). Sequence:</p> <pre>SSQIRQNYSTDVEAAVNSLVNLYLQASYTYLSLGFYFDRDD VALEGVSHF FRELAEEKREGYERLLKMQNQRGGRALFQDIKKAEDW GKTPDAMKAAM ALEKKLNQALLDLHALGSARTDPHLCDFLETHFLDEEVKLI KKMGDHLTN LHRLGGPEAGLGEYLFERLTLKHD</pre> <p>Database link: P02792</p> <p style="text-align: right;"> Run BLAST with  Run BLAST with</p>
Positive control	IHC-P: Human breast cancer, prostate cancer, prostate, cerebrum, skin cancer and colorectal cancer tissues. WB: Pig liver lysate; Recombinant human Ferritin Light Chain protein.
General notes	<p>Reproducibility is key to advancing scientific discovery and accelerating scientists' next breakthrough.</p> <p>Abcam is leading the way with our range of recombinant antibodies, knockout-validated antibodies and knockout cell lines, all of which support improved reproducibility.</p> <p>We are also planning to innovate the way in which we present recommended applications and species on our product datasheets, so that only applications & species that have been tested in our own labs, our suppliers or by selected trusted collaborators are covered by our Abpromise™ guarantee.</p> <p>In preparation for this, we have started to update the applications & species that this product is Abpromise guaranteed for.</p> <p>We are also updating the applications & species that this product has been “predicted to work with,” however this information is not covered by our Abpromise guarantee.</p>

Applications & species from publications and Abreviews that have not been tested in our own labs or in those of our suppliers are not covered by the Abpromise guarantee.

Please check that this product meets your needs before purchasing. If you have any questions, special requirements or concerns, please send us an inquiry and/or contact our Support team ahead of purchase. Recommended alternatives for this product can be found below, as well as customer reviews and Q&As.

Properties

Form	Liquid
Storage instructions	Shipped at 4°C. Store at +4°C short term (1-2 weeks). Upon delivery aliquot. Store at -20°C long term. Avoid freeze / thaw cycle.
Storage buffer	pH: 7.40 Preservative: 0.02% Sodium azide Constituents: PBS, 50% Glycerol
Purity	Immunogen affinity purified
Purification notes	ab232752 was purified by antigen-specific affinity chromatography followed by Protein A affinity chromatography.
Clonality	Polyclonal
Isotype	IgG

Applications

Our [Abpromise guarantee](#) covers the use of **ab232752** in the following tested applications.

The application notes include recommended starting dilutions; optimal dilutions/concentrations should be determined by the end user.

Application	Abreviews	Notes
IHC-P		Use a concentration of 5 - 20 µg/ml.
WB		Use a concentration of 0.2 - 2 µg/ml. Predicted molecular weight: 20 kDa.

Target

Function	Stores iron in a soluble, non-toxic, readily available form. Important for iron homeostasis. Iron is taken up in the ferrous form and deposited as ferric hydroxides after oxidation. Also plays a role in delivery of iron to cells. Mediates iron uptake in capsule cells of the developing kidney.
Involvement in disease	Defects in FTL are the cause of hereditary hyperferritinemia-cataract syndrome (HHCS) [MIM:600886]. It is an autosomal dominant disease characterized by early-onset bilateral cataract. Affected patients have elevated level of circulating ferritin. HHCS is caused by mutations in the iron responsive element (IRE) of the FTL gene. Defects in FTL are the cause of neurodegeneration with brain iron accumulation type 3 (NBIA3) [MIM:606159]; also known as adult-onset basal ganglia disease. It is a movement disorder with heterogeneous presentations starting in the fourth to sixth decade. It is characterized by a variety of neurological signs including parkinsonism, ataxia, corticospinal signs, mild nonprogressive

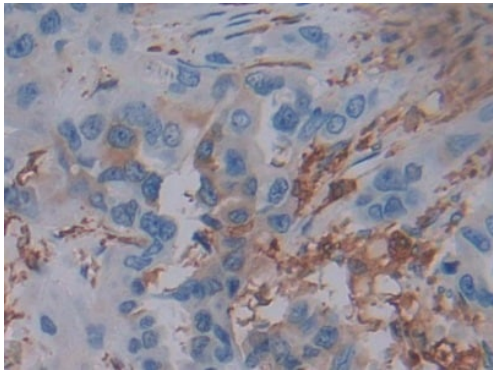
cognitive deficit and episodic psychosis. It is linked with decreased serum ferritin levels.

Sequence similarities

Belongs to the ferritin family.

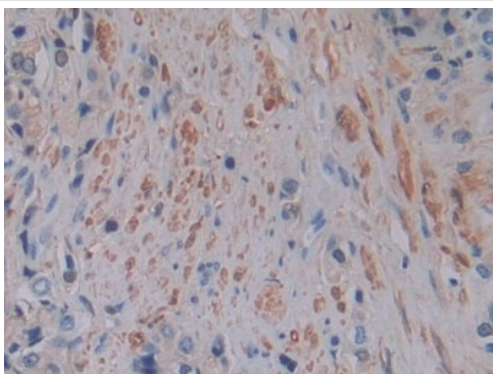
Contains 1 ferritin-like diiron domain.

Images



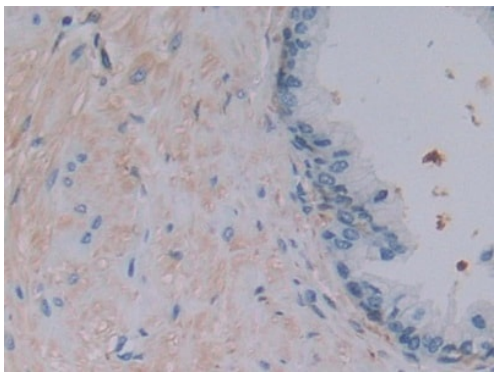
Paraffin-embedded human breast cancer tissue stained for Ferritin Light Chain using ab232752 at 20 µg/ml in immunohistochemical analysis. DAB staining.

Immunohistochemistry (Formalin/PFA-fixed paraffin-embedded sections) - Anti-Ferritin Light Chain antibody (ab232752)



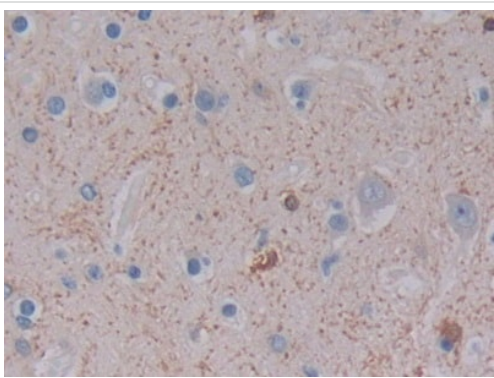
Paraffin-embedded human prostate cancer tissue stained for Ferritin Light Chain using ab232752 at 20 µg/ml in immunohistochemical analysis. DAB staining.

Immunohistochemistry (Formalin/PFA-fixed paraffin-embedded sections) - Anti-Ferritin Light Chain antibody (ab232752)



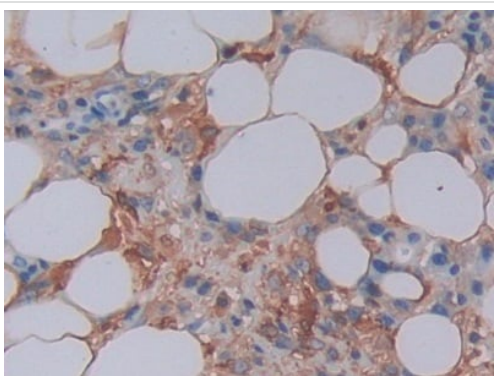
Immunohistochemistry (Formalin/PFA-fixed paraffin-embedded sections) - Anti-Ferritin Light Chain antibody (ab232752)

Paraffin-embedded human prostate tissue stained for Ferritin Light Chain using ab232752 at 20 $\mu\text{g/ml}$ in immunohistochemical analysis. DAB staining.



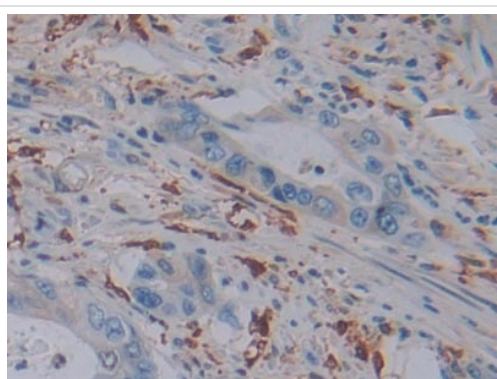
Immunohistochemistry (Formalin/PFA-fixed paraffin-embedded sections) - Anti-Ferritin Light Chain antibody (ab232752)

Paraffin-embedded human cerebrum tissue stained for Ferritin Light Chain using ab232752 at 20 $\mu\text{g/ml}$ in immunohistochemical analysis. DAB staining.



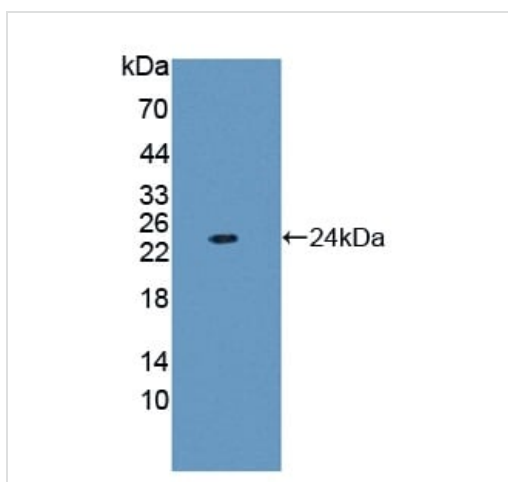
Immunohistochemistry (Formalin/PFA-fixed paraffin-embedded sections) - Anti-Ferritin Light Chain antibody (ab232752)

Paraffin-embedded human skin cancer tissue stained for Ferritin Light Chain using ab232752 at 20 $\mu\text{g/ml}$ in immunohistochemical analysis. DAB staining.



Immunohistochemistry (Formalin/PFA-fixed paraffin-embedded sections) - Anti-Ferritin Light Chain antibody (ab232752)

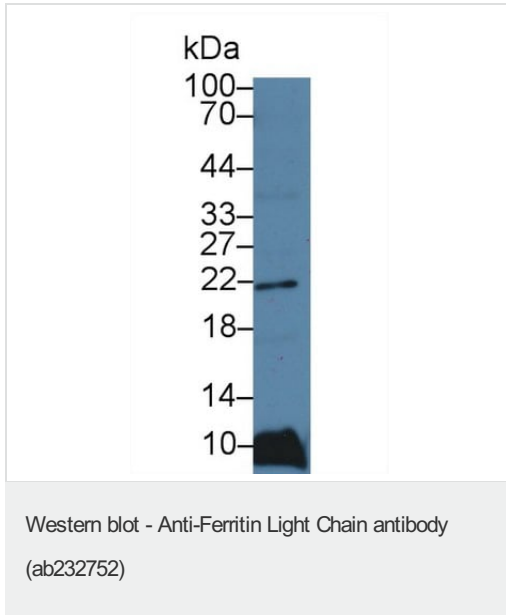
Paraffin-embedded human colorectal cancer tissue stained for Ferritin Light Chain using ab232752 at 20 $\mu\text{g/ml}$ in immunohistochemical analysis. DAB staining.



Western blot - Anti-Ferritin Light Chain antibody (ab232752)

Anti-Ferritin Light Chain antibody (ab232752) at 2 $\mu\text{g/ml}$ + Recombinant human Ferritin Light Chain protein.

Predicted band size: 20 kDa



Anti-Ferritin Light Chain antibody (ab232752) at 2 µg/ml + Pig liver lysate.

Predicted band size: 20 kDa

Please note: All products are "FOR RESEARCH USE ONLY. NOT FOR USE IN DIAGNOSTIC PROCEDURES"

Our Abpromise to you: Quality guaranteed and expert technical support

- Replacement or refund for products not performing as stated on the datasheet
- Valid for 12 months from date of delivery
- Response to your inquiry within 24 hours
- We provide support in Chinese, English, French, German, Japanese and Spanish
- Extensive multi-media technical resources to help you
- We investigate all quality concerns to ensure our products perform to the highest standards

If the product does not perform as described on this datasheet, we will offer a refund or replacement. For full details of the Abpromise, please visit <https://www.abcam.com/abpromise> or contact our technical team.

Terms and conditions

- Guarantee only valid for products bought direct from Abcam or one of our authorized distributors