

Product datasheet

Anti-FES antibody [EPR3230(2)] ab108418

Recombinant RabMAb

[4 Images](#)

Overview

Product name	Anti-FES antibody [EPR3230(2)]
Description	Rabbit monoclonal [EPR3230(2)] to FES
Host species	Rabbit
Tested applications	Suitable for: WB, ICC/IF Unsuitable for: IHC-P
Species reactivity	Reacts with: Human
Immunogen	Synthetic peptide within Human FES aa 750-850. The exact sequence is proprietary.
Positive control	TF-1, U937, and Human spleen lysates; HeLa cells
General notes	Mouse, Rat: We have preliminary internal testing data to indicate this antibody may not react with these species. Please contact us for more information.

This product is a recombinant monoclonal antibody, which offers several advantages including:

- High batch-to-batch consistency and reproducibility
- Improved sensitivity and specificity
- Long-term security of supply
- Animal-free production

For more information [see here](#).

Our RabMAb[®] technology is a patented hybridoma-based technology for making rabbit monoclonal antibodies. For details on our patents, please refer to [RabMAb[®] patents](#).

Reproducibility is key to advancing scientific discovery and accelerating scientists' next breakthrough.

Abcam is leading the way with our range of recombinant antibodies, knockout-validated antibodies and knockout cell lines, all of which support improved reproducibility.

We are also planning to innovate the way in which we present recommended applications and species on our product datasheets, so that only applications & species that have been tested in our own labs, our suppliers or by selected trusted collaborators are covered by our Abpromise[™] guarantee.

In preparation for this, we have started to update the applications & species that this product is Abpromise guaranteed for.

We are also updating the applications & species that this product has been "predicted to work

with," however this information is not covered by our Abpromise guarantee.

Applications & species from publications and Abreviews that have not been tested in our own labs or in those of our suppliers are not covered by the Abpromise guarantee.

Please check that this product meets your needs before purchasing. If you have any questions, special requirements or concerns, please send us an inquiry and/or contact our Support team ahead of purchase. Recommended alternatives for this product can be found below, as well as customer reviews and Q&As.

Properties

Form	Liquid
Storage instructions	Shipped at 4°C. Store at -20°C. Stable for 12 months at -20°C.
Storage buffer	pH: 7.20 Preservative: 0.01% Sodium azide Constituents: 9% PBS, 40% Glycerol (glycerin, glycerine), 0.05% BSA, 50% Tissue culture supernatant
Purity	Tissue culture supernatant
Clonality	Monoclonal
Clone number	EPR3230(2)
Isotype	IgG

Applications

Our [Abpromise guarantee](#) covers the use of **ab108418** in the following tested applications.

The application notes include recommended starting dilutions; optimal dilutions/concentrations should be determined by the end user.

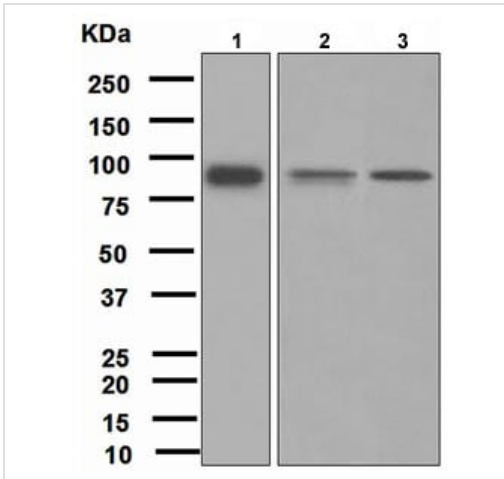
Application	Abreviews	Notes
WB		1/1000 - 1/10000. Detects a band of approximately 93 kDa (predicted molecular weight: 93 kDa).
ICC/IF		1/100 - 1/250.

Application notes Is unsuitable for IHC-P.

Target

Sequence similarities Belongs to the protein kinase superfamily. Tyr protein kinase family. Fes/fps subfamily.
Contains 1 FCH domain.
Contains 1 protein kinase domain.
Contains 1 SH2 domain.

Images



Western blot - Anti-FES antibody [EPR3230(2)] (ab108418)

All lanes : Anti-FES antibody [EPR3230(2)] (ab108418) at 1/1000 dilution

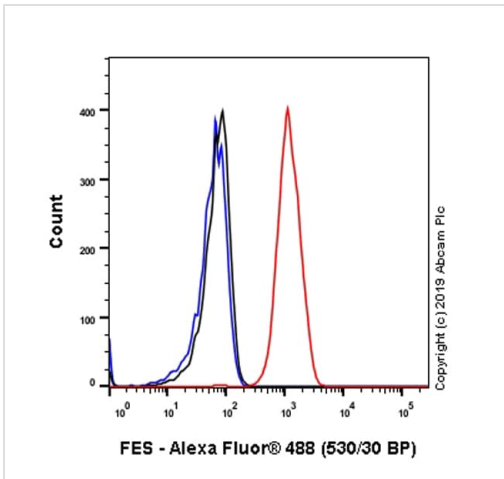
Lane 1 : TF-1 lysate

Lane 2 : U937 lysate

Lane 3 : Human spleen lysate

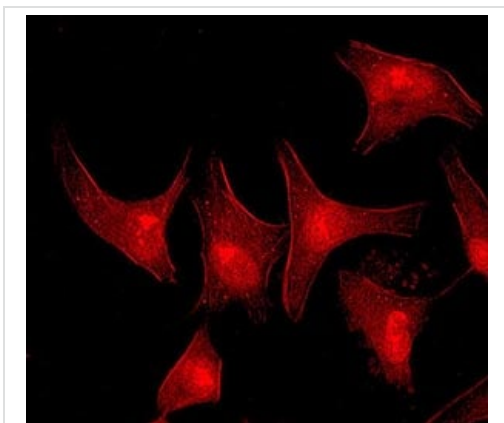
Lysates/proteins at 10 µg per lane.

Predicted band size: 93 kDa



Flow Cytometry - Anti-FES antibody [EPR3230(2)] (ab108418)

Flow Cytometry analysis of HeLa (Human cervix adenocarcinoma epithelial cell) cells labeling FES with purified ab108418 at 1/100 dilution (10 µg/mL) (Red). Cells were fixed with 4% Paraformaldehyde and permeabilised with 90% Methanol. A Goat anti rabbit IgG (Alexa Fluor® 488, [ab150077](#)) secondary antibody was used at 1/2000. Isotype control - Rabbit monoclonal IgG (Black). Unlabeled control - Cells without incubation with primary antibody and secondary antibody (Blue).



Immunocytochemistry/ Immunofluorescence - Anti-FES antibody [EPR3230(2)] (ab108418)

ab108418, at a 1/100 dilution, staining FES in HeLa (Human epithelial cell line from cervix adenocarcinoma) cells by Immunofluorescence.

Why choose a recombinant antibody?



Research with confidence
Consistent and reproducible results



Long-term and scalable supply
Recombinant technology



Success from the first experiment
Confirmed specificity



Ethical standards compliant
Animal-free production

Anti-FES antibody [EPR3230(2)] (ab108418)

Please note: All products are "FOR RESEARCH USE ONLY. NOT FOR USE IN DIAGNOSTIC PROCEDURES"

Our Abpromise to you: Quality guaranteed and expert technical support

- Replacement or refund for products not performing as stated on the datasheet
- Valid for 12 months from date of delivery
- Response to your inquiry within 24 hours
- We provide support in Chinese, English, French, German, Japanese and Spanish
- Extensive multi-media technical resources to help you
- We investigate all quality concerns to ensure our products perform to the highest standards

If the product does not perform as described on this datasheet, we will offer a refund or replacement. For full details of the Abpromise, please visit <https://www.abcam.com/abpromise> or contact our technical team.

Terms and conditions

- Guarantee only valid for products bought direct from Abcam or one of our authorized distributors