

Product datasheet

Anti-FGD1 antibody ab226473

1 Image

Overview

Product name	Anti-FGD1 antibody
Description	Rabbit polyclonal to FGD1
Host species	Rabbit
Tested applications	Suitable for: IP
Species reactivity	Reacts with: Human
Immunogen	Synthetic peptide within Human FGD1 aa 50-100. The exact sequence is proprietary. Database link: P98174
Positive control	IP: HeLa cell lysate.
General notes	ab226473 has not performed satisfactorily when used for WB of FGD1 in crude preparations (e.g. whole cell lysate). This antibody can be used for WB of enriched (e.g. immunoprecipitated) sources of FGD1.

Reproducibility is key to advancing scientific discovery and accelerating scientists' next breakthrough.

Abcam is leading the way with our range of recombinant antibodies, knockout-validated antibodies and knockout cell lines, all of which support improved reproducibility.

We are also planning to innovate the way in which we present recommended applications and species on our product datasheets, so that only applications & species that have been tested in our own labs, our suppliers or by selected trusted collaborators are covered by our Abpromise™ guarantee.

In preparation for this, we have started to update the applications & species that this product is Abpromise guaranteed for.

We are also updating the applications & species that this product has been “predicted to work with,” however this information is not covered by our Abpromise guarantee.

Applications & species from publications and Abreviews that have not been tested in our own labs or in those of our suppliers are not covered by the Abpromise guarantee.

Please check that this product meets your needs before purchasing. If you have any questions, special requirements or concerns, please send us an inquiry and/or contact our Support team ahead of purchase. Recommended alternatives for this product can be found below, as well as customer reviews and Q&As.

Properties

Properties

Form	Liquid
Storage instructions	Shipped at 4°C. Store at +4°C short term (1-2 weeks). Upon delivery aliquot. Store at -20°C long term. Avoid freeze / thaw cycle.
Storage buffer	pH: 7 Preservative: 0.09% Sodium azide Constituent: Tris citrate/phosphate
Purity	pH 7 to 8 Immunogen affinity purified
Clonality	Polyclonal
Isotype	IgG

Applications

Our [Abpromise guarantee](#) covers the use of **ab226473** in the following tested applications.

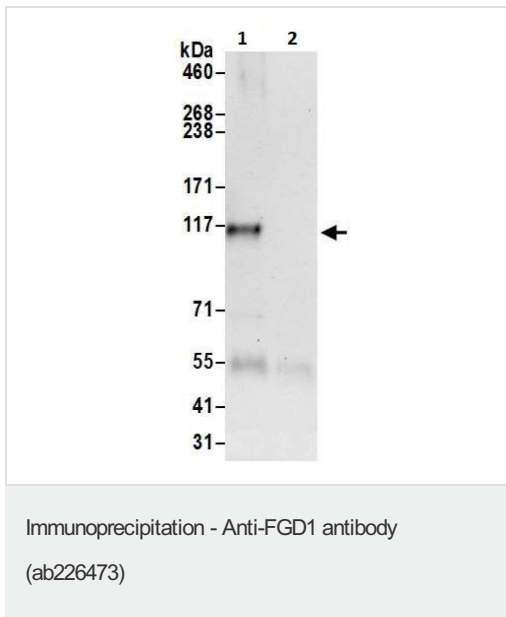
The application notes include recommended starting dilutions; optimal dilutions/concentrations should be determined by the end user.

Application	Abreviews	Notes
IP		Use at 2-10 µg/mg of lysate.

Target

Function	Activates CDC42, a member of the Ras-like family of Rho- and Rac proteins, by exchanging bound GDP for free GTP. Plays a role in regulating the actin cytoskeleton and cell shape.
Tissue specificity	Expressed in fetal heart, brain, lung, kidney and placenta. Less expressed in liver; adult heart, brain, lung, pancreas and skeletal muscle.
Involvement in disease	Aarskog-Scott syndrome Defects in FGD1 are found in a patient with non-syndromal X-linked mental retardation.
Sequence similarities	Contains 1 DH (DBL-homology) domain. Contains 1 FYVE-type zinc finger. Contains 2 PH domains.
Domain	The DH domain is involved in interaction with CCPG1.
Cellular localization	Cytoplasm. Cell projection, lamellipodium. Cell projection, ruffle. Cytoplasm, cytoskeleton. Associated with membrane ruffles and lamellipodia.

Images



FGD1 was immunoprecipitated from HeLa (human epithelial cell line from cervix adenocarcinoma) whole cell lysate (prepared using NETN buffer; 1.0 mg for IP, 20% of IP loaded) with ab226473 at 6 $\mu\text{g}/\text{mg}$ lysate. Western blot was performed from the immunoprecipitate using ab226473 at 1 $\mu\text{g}/\text{ml}$.

Lane 1: ab226473 IP in HeLa whole cell lysate.

Lane 2: Control IgG IP in HeLa whole cell lysate.

Detection: Chemiluminescence with exposure time of 30 seconds.

Please note: All products are "FOR RESEARCH USE ONLY. NOT FOR USE IN DIAGNOSTIC PROCEDURES"

Our Abpromise to you: Quality guaranteed and expert technical support

- Replacement or refund for products not performing as stated on the datasheet
- Valid for 12 months from date of delivery
- Response to your inquiry within 24 hours
- We provide support in Chinese, English, French, German, Japanese and Spanish
- Extensive multi-media technical resources to help you
- We investigate all quality concerns to ensure our products perform to the highest standards

If the product does not perform as described on this datasheet, we will offer a refund or replacement. For full details of the Abpromise, please visit <https://www.abcam.com/abpromise> or contact our technical team.

Terms and conditions

- Guarantee only valid for products bought direct from Abcam or one of our authorized distributors