


## Product datasheet

# Anti-FGD1 antibody - C-terminal ab227302

1 Image

### Overview

---

<b>Product name</b>	Anti-FGD1 antibody - C-terminal
<b>Description</b>	Rabbit polyclonal to FGD1 - C-terminal
<b>Host species</b>	Rabbit
<b>Tested applications</b>	<b>Suitable for:</b> WB
<b>Species reactivity</b>	<b>Reacts with:</b> Human <b>Predicted to work with:</b> Mouse, Rat, Cow 
<b>Immunogen</b>	Recombinant fragment within Human FGD1 (C terminal). The exact sequence is proprietary. Database link: <a href="#">P98174</a>
<b>Positive control</b>	WB: U-87 MG, SK-N-SH, IMR32 and SK-N-AS whole cell extracts.
<b>General notes</b>	<p>Reproducibility is key to advancing scientific discovery and accelerating scientists' next breakthrough.</p> <p>Abcam is leading the way with our range of recombinant antibodies, knockout-validated antibodies and knockout cell lines, all of which support improved reproducibility.</p> <p>We are also planning to innovate the way in which we present recommended applications and species on our product datasheets, so that only applications &amp; species that have been tested in our own labs, our suppliers or by selected trusted collaborators are covered by our Abpromise™ guarantee.</p> <p>In preparation for this, we have started to update the applications &amp; species that this product is Abpromise guaranteed for.</p> <p>We are also updating the applications &amp; species that this product has been “predicted to work with,” however this information is not covered by our Abpromise guarantee.</p> <p>Applications &amp; species from publications and Abreviews that have not been tested in our own labs or in those of our suppliers are not covered by the Abpromise guarantee.</p> <p>Please check that this product meets your needs before purchasing. If you have any questions, special requirements or concerns, please send us an inquiry and/or contact our Support team ahead of purchase. Recommended alternatives for this product can be found below, as well as customer reviews and Q&amp;As.</p>

### Properties

---

<b>Form</b>	Liquid
-------------	--------

<b>Storage instructions</b>	Shipped at 4°C. Store at +4°C short term (1-2 weeks). Upon delivery aliquot. Store at -20°C long term. Avoid freeze / thaw cycle.
<b>Storage buffer</b>	pH: 7.00 Preservative: 0.01% Thimerosal (merthiolate) Constituents: 1.21% Tris, 0.75% Glycine, 20% Glycerol (glycerin, glycerine)
<b>Purity</b>	Immunogen affinity purified
<b>Clonality</b>	Polyclonal
<b>Isotype</b>	IgG

## Applications

Our [Abpromise guarantee](#) covers the use of **ab227302** in the following tested applications.

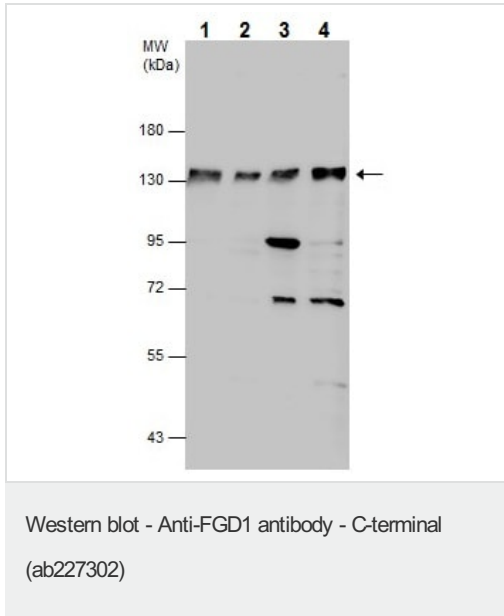
The application notes include recommended starting dilutions; optimal dilutions/concentrations should be determined by the end user.

Application	Abreviews	Notes
WB		1/500 - 1/3000. Predicted molecular weight: 106 kDa.

## Target

<b>Function</b>	Activates CDC42, a member of the Ras-like family of Rho- and Rac proteins, by exchanging bound GDP for free GTP. Plays a role in regulating the actin cytoskeleton and cell shape.
<b>Tissue specificity</b>	Expressed in fetal heart, brain, lung, kidney and placenta. Less expressed in liver; adult heart, brain, lung, pancreas and skeletal muscle.
<b>Involvement in disease</b>	Aarskog-Scott syndrome Defects in FGD1 are found in a patient with non-syndromal X-linked mental retardation.
<b>Sequence similarities</b>	Contains 1 DH (DBL-homology) domain. Contains 1 FYVE-type zinc finger. Contains 2 PH domains.
<b>Domain</b>	The DH domain is involved in interaction with CCPG1.
<b>Cellular localization</b>	Cytoplasm. Cell projection, lamellipodium. Cell projection, ruffle. Cytoplasm, cytoskeleton. Associated with membrane ruffles and lamellipodia.

## Images



**All lanes :** Anti-FGD1 antibody - C-terminal (ab227302) at 1/500 dilution

**Lane 1 :** U-87 MG (human glioblastoma-astrocytoma epithelial cell line) whole cell extract

**Lane 2 :** SK-N-SH (human neuroblastoma cell line) whole cell extract

**Lane 3 :** IMR32 (human brain neuroblast cell line) whole cell extract

**Lane 4 :** SK-N-AS (human brain neuroblastoma cell line) whole cell extract

Lysates/proteins at 30 µg per lane.

**Predicted band size:** 106 kDa

7.5% SDS-PAGE gel.

**Please note:** All products are "FOR RESEARCH USE ONLY. NOT FOR USE IN DIAGNOSTIC PROCEDURES"

### Our Abpromise to you: Quality guaranteed and expert technical support

- Replacement or refund for products not performing as stated on the datasheet
- Valid for 12 months from date of delivery
- Response to your inquiry within 24 hours
- We provide support in Chinese, English, French, German, Japanese and Spanish
- Extensive multi-media technical resources to help you
- We investigate all quality concerns to ensure our products perform to the highest standards

If the product does not perform as described on this datasheet, we will offer a refund or replacement. For full details of the Abpromise, please visit <https://www.abcam.com/abpromise> or contact our technical team.

### Terms and conditions

- Guarantee only valid for products bought direct from Abcam or one of our authorized distributors