



## Product datasheet

# Anti-FGF12 antibody ab231956

8 Images

### Overview

<b>Product name</b>	Anti-FGF12 antibody
<b>Description</b>	Rabbit polyclonal to FGF12
<b>Host species</b>	Rabbit
<b>Tested applications</b>	<b>Suitable for:</b> IHC-P, WB
<b>Species reactivity</b>	<b>Reacts with:</b> Mouse, Rat, Human
<b>Immunogen</b>	<p>Recombinant full length protein (His-T7-tag) corresponding to Human FGF12 aa 1-181. Expressed in E.coli.</p> <p>Sequence:</p> <p>MESKEPQLKGM/TRLFSQQGYFLQMHPDGTIDGTKDENSD          YTLFNLIPVG          LRVVAIQGVKASLYVAMNGEGYLYSSDVFTPECKFKESVF          ENYYVIYSST          LYRQQESGRAWFLGLNKEGQIMKGNRVKTKPSSHFPVK          PIEVCMYREPS          LHEIGEKQGRSRKSSGTPTMNGGKVVNQDST</p> <p>Database link: <a href="#">P61328-2</a></p> <p style="text-align: right;">  <a href="#">Run BLAST with</a>                   <a href="#">Run BLAST with</a> </p>
<b>Positive control</b>	IHC-P: Human stomach cancer, cerebrum, kidney, and liver tissues. WB: Recombinant human FGF12; Mouse and rat cerebrum lysate; Rat heart lysate.
<b>General notes</b>	<p>Reproducibility is key to advancing scientific discovery and accelerating scientists' next breakthrough.</p> <p>Abcam is leading the way with our range of recombinant antibodies, knockout-validated antibodies and knockout cell lines, all of which support improved reproducibility.</p> <p>We are also planning to innovate the way in which we present recommended applications and species on our product datasheets, so that only applications &amp; species that have been tested in our own labs, our suppliers or by selected trusted collaborators are covered by our Abpromise™ guarantee.</p> <p>In preparation for this, we have started to update the applications &amp; species that this product is Abpromise guaranteed for.</p> <p>We are also updating the applications &amp; species that this product has been “predicted to work with,” however this information is not covered by our Abpromise guarantee.</p>

Applications & species from publications and Abreviews that have not been tested in our own labs or in those of our suppliers are not covered by the Abpromise guarantee.

Please check that this product meets your needs before purchasing. If you have any questions, special requirements or concerns, please send us an inquiry and/or contact our Support team ahead of purchase. Recommended alternatives for this product can be found below, as well as customer reviews and Q&As.

## Properties

---

<b>Form</b>	Liquid
<b>Storage instructions</b>	Shipped at 4°C. Store at +4°C short term (1-2 weeks). Upon delivery aliquot. Store at -20°C long term. Avoid freeze / thaw cycle.
<b>Storage buffer</b>	pH: 7.40 Preservative: 0.02% Sodium azide Constituents: PBS, 50% Glycerol
<b>Purity</b>	Immunogen affinity purified
<b>Purification notes</b>	Antigen-specific affinity chromatography followed by Protein A affinity chromatography.
<b>Clonality</b>	Polyclonal
<b>Isotype</b>	IgG

## Applications

---

Our [Abpromise guarantee](#) covers the use of **ab231956** in the following tested applications.

The application notes include recommended starting dilutions; optimal dilutions/concentrations should be determined by the end user.

Application	Abreviews	Notes
IHC-P		Use a concentration of 5 - 20 µg/ml.
WB		Use a concentration of 0.2 - 2 µg/ml. Predicted molecular weight: 27 kDa.

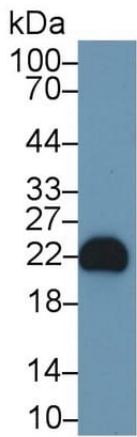
## Target

---

<b>Function</b>	Probably involved in nervous system development and function.
<b>Tissue specificity</b>	Brain, eye and testis; highly expressed in embryonic retina, olfactory epithelium, olfactory bulb, and in a segmental pattern of the body wall; in adult olfactory bulb, less in cerebellum, deep cerebellar nuclei, cortex and multiple midbrain structures.
<b>Sequence similarities</b>	Belongs to the heparin-binding growth factors family.
<b>Cellular localization</b>	Nucleus.

## Images

---



Western blot - Anti-FGF12 antibody (ab231956)

Anti-FGF12 antibody (ab231956) at 1  $\mu$ g/ml + Rat cerebrum lysate.

Developed using the ECL technique.

**Predicted band size:** 27 kDa

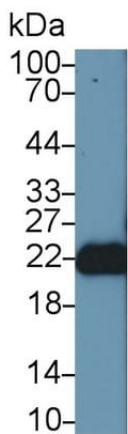


Western blot - Anti-FGF12 antibody (ab231956)

Anti-FGF12 antibody (ab231956) at 1  $\mu$ g/ml + Rat heart lysate.

Developed using the ECL technique.

**Predicted band size:** 27 kDa

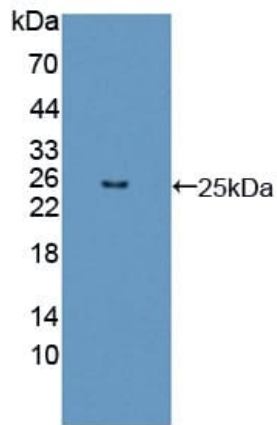


Western blot - Anti-FGF12 antibody (ab231956)

Anti-FGF12 antibody (ab231956) at 1  $\mu$ g/ml + Mouse cerebrum lysate.

Developed using the ECL technique.

**Predicted band size:** 27 kDa

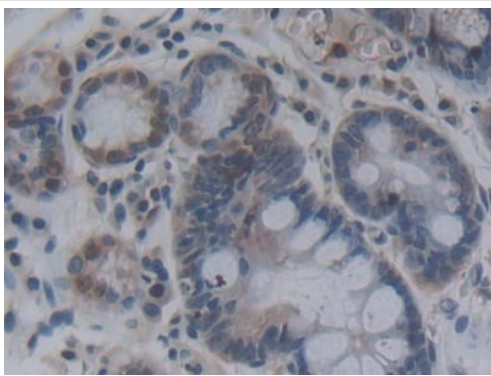


Western blot - Anti-FGF12 antibody (ab231956)

Anti-FGF12 antibody (ab231956) at 1  $\mu\text{g/ml}$  + Recombinant human FGF12 protein.

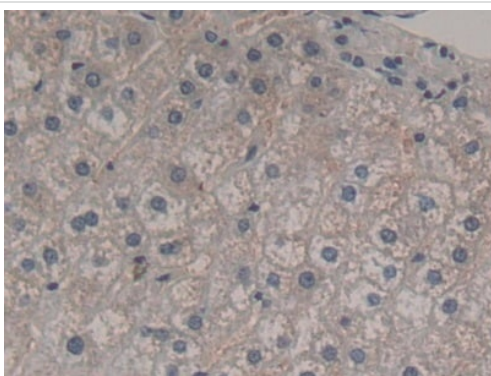
Developed using the ECL technique.

**Predicted band size:** 27 kDa



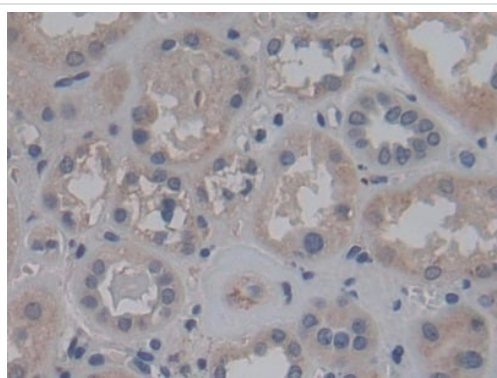
Immunohistochemistry (Formalin/PFA-fixed paraffin-embedded sections) - Anti-FGF12 antibody (ab231956)

Formalin-fixed, paraffin-embedded human stomach cancer tissue stained for FGF12 using ab231956 at 20  $\mu\text{g/mL}$  in immunohistochemical analysis. DAB staining.



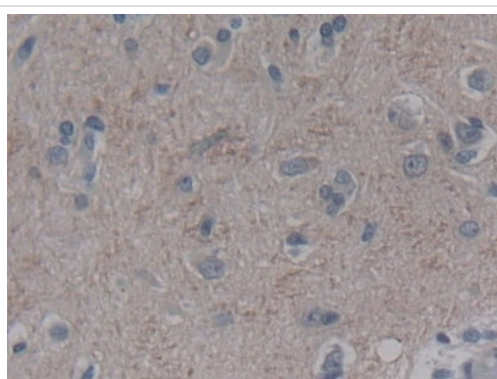
Immunohistochemistry (Formalin/PFA-fixed paraffin-embedded sections) - Anti-FGF12 antibody (ab231956)

Formalin-fixed, paraffin-embedded human liver tissue stained for FGF12 using ab231956 at 20  $\mu\text{g/mL}$  in immunohistochemical analysis. DAB staining.



Immunohistochemistry (Formalin/PFA-fixed paraffin-embedded sections) - Anti-FGF12 antibody (ab231956)

Formalin-fixed, paraffin-embedded human kidney tissue stained for FGF12 using ab231956 at 20 µg/mL in immunohistochemical analysis. DAB staining.



Immunohistochemistry (Formalin/PFA-fixed paraffin-embedded sections) - Anti-FGF12 antibody (ab231956)

Formalin-fixed, paraffin-embedded human cerebrum tissue stained for FGF12 using ab231956 at 20 µg/mL in immunohistochemical analysis. DAB staining.

**Please note:** All products are "FOR RESEARCH USE ONLY. NOT FOR USE IN DIAGNOSTIC PROCEDURES"

### **Our Abpromise to you: Quality guaranteed and expert technical support**

---

- Replacement or refund for products not performing as stated on the datasheet
- Valid for 12 months from date of delivery
- Response to your inquiry within 24 hours
  
- We provide support in Chinese, English, French, German, Japanese and Spanish
- Extensive multi-media technical resources to help you
- We investigate all quality concerns to ensure our products perform to the highest standards

If the product does not perform as described on this datasheet, we will offer a refund or replacement. For full details of the Abpromise, please visit <https://www.abcam.com/abpromise> or contact our technical team.

## Terms and conditions

---

- Guarantee only valid for products bought direct from Abcam or one of our authorized distributors