

Product datasheet

Anti-FGF14 antibody ab229610

2 Images

Overview

<b>Product name</b>	Anti-FGF14 antibody
<b>Description</b>	Rabbit polyclonal to FGF14
<b>Host species</b>	Rabbit
<b>Tested applications</b>	<b>Suitable for:</b> WB, ICC/IF
<b>Species reactivity</b>	<b>Reacts with:</b> Human <b>Predicted to work with:</b> Mouse, Rat, Chicken, Cow ▲
<b>Positive control</b>	WB: U-87 MG, SK-N-SH, IMR32 and SK-N-AS whole cell extracts. ICC/IF: U-87 MG cells.

Properties

<b>Form</b>	Liquid
<b>Storage instructions</b>	Shipped at 4°C. Store at +4°C short term (1-2 weeks). Upon delivery aliquot. Store at -20°C long term. Avoid freeze / thaw cycle.
<b>Storage buffer</b>	pH: 7.00 Preservative: 0.025% Proclin Constituents: PBS, 20% Glycerol
<b>Purity</b>	Immunogen affinity purified
<b>Clonality</b>	Polyclonal
<b>Isotype</b>	IgG

Applications

Our [Abpromise guarantee](#) covers the use of **ab229610** in the following tested applications.

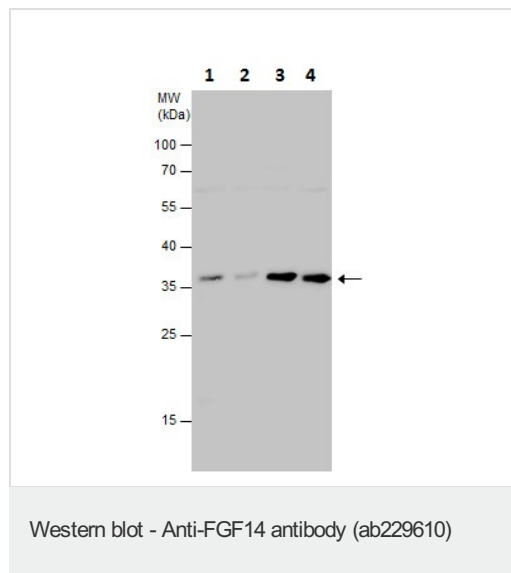
The application notes include recommended starting dilutions; optimal dilutions/concentrations should be determined by the end user.

Application	Abreviews	Notes
WB		1/500 - 1/3000. Predicted molecular weight: 28 kDa.
ICC/IF		1/100 - 1/1000.

## Target

<b>Relevance</b>	FGF14 is probably involved in nervous system development and function.
<b>Cellular localization</b>	Nuclear

## Images



**All lanes :** Anti-FGF14 antibody (ab229610) at 1/500 dilution

**Lane 1 :** U-87 MG (human glioblastoma-astrocytoma epithelial cell line) whole cell extract

**Lane 2 :** SK-N-SH (human neuroblastoma cell line) whole cell extract

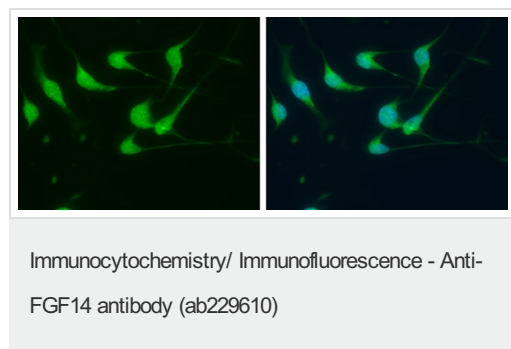
**Lane 3 :** IMR32 (Human brain neuroblast cell line) whole cell extract

**Lane 4 :** SK-N-AS (human neuroblastoma cell line) whole cell extract

Lysates/proteins at 30 µg per lane.

**Predicted band size:** 28 kDa

12% SDS-PAGE gel.



4% paraformaldehyde-fixed U-87 MG (human glioblastoma-astrocytoma epithelial cell line) cells stained for FGF14 (green) using ab229610 at 1/500 dilution in ICC/IF.

Nuclear counterstain: Hoechst 33342 (blue).

**Please note:** All products are "FOR RESEARCH USE ONLY. NOT FOR USE IN DIAGNOSTIC PROCEDURES"

## Our Abpromise to you: Quality guaranteed and expert technical support

- Replacement or refund for products not performing as stated on the datasheet
- Valid for 12 months from date of delivery
- Response to your inquiry within 24 hours
- We provide support in Chinese, English, French, German, Japanese and Spanish

- Extensive multi-media technical resources to help you
- We investigate all quality concerns to ensure our products perform to the highest standards

If the product does not perform as described on this datasheet, we will offer a refund or replacement. For full details of the Abpromise, please visit <https://www.abcam.com/abpromise> or contact our technical team.

### **Terms and conditions**

---

- Guarantee only valid for products bought direct from Abcam or one of our authorized distributors