

## Product datasheet

# Anti-FIBIN antibody ab122621

[5 Images](#)

### Overview

---

<b>Product name</b>	Anti-FIBIN antibody
<b>Description</b>	Rabbit polyclonal to FIBIN
<b>Host species</b>	Rabbit
<b>Tested applications</b>	<b>Suitable for:</b> IHC-P, WB
<b>Species reactivity</b>	<b>Reacts with:</b> Human
<b>Immunogen</b>	antigen sequence: TLHHYFVPDG DYEENDDPEK CQLLFRVSDH RRCSQGEQSQ VGSLLSLTLR EEFTVLGRQV EDAGRVLLEGI SKSISYD, corresponding to amino acids 32-108 of Human FIBIN. <a href="#">Run BLAST with ExPASy</a> <a href="#">Run BLAST with NCBI</a>
<b>Positive control</b>	WB: FIBIN over-expression HEK293T Lysate. IHC-P: Human placenta, fallopian tube, endometrium and skin tissue.
<b>General notes</b>	<p>The Life Science industry has been in the grips of a reproducibility crisis for a number of years. Abcam is leading the way in addressing this with our range of recombinant monoclonal antibodies and knockout edited cell lines for gold-standard validation. Please check that this product meets your needs before purchasing.</p> <p>If you have any questions, special requirements or concerns, please send us an inquiry and/or contact our Support team ahead of purchase. Recommended alternatives for this product can be found below, along with publications, customer reviews and Q&amp;As</p>

### Properties

---

<b>Form</b>	Liquid
<b>Storage instructions</b>	Shipped at 4°C. Upon delivery aliquot and store at -20°C. Avoid repeated freeze / thaw cycles.
<b>Storage buffer</b>	pH: 7.20 Preservative: 0.02% Sodium azide Constituents: 59% PBS, 40% Glycerol (glycerin, glycerine)
<b>Purity</b>	Immunogen affinity purified
<b>Clonality</b>	Polyclonal
<b>Isotype</b>	IgG

## Applications

### The Abpromise guarantee

Our [Abpromise guarantee](#) covers the use of ab122621 in the following tested applications.

The application notes include recommended starting dilutions; optimal dilutions/concentrations should be determined by the end user.

Application	Abreviews	Notes
IHC-P		1/20 - 1/50. Perform heat mediated antigen retrieval with citrate buffer pH 6 before commencing with IHC staining protocol.
WB		Use a concentration of 0.04 - 0.4 µg/ml.

## Target

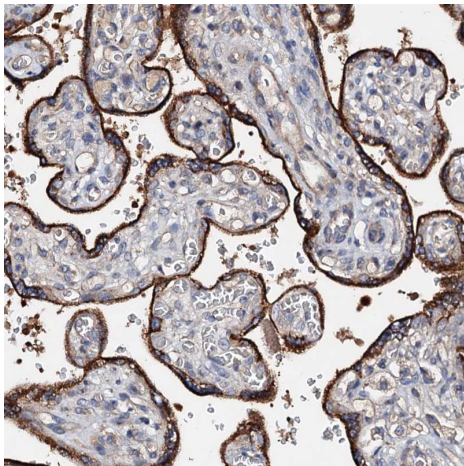
### Sequence similarities

Belongs to the FIBIN family.

### Cellular localization

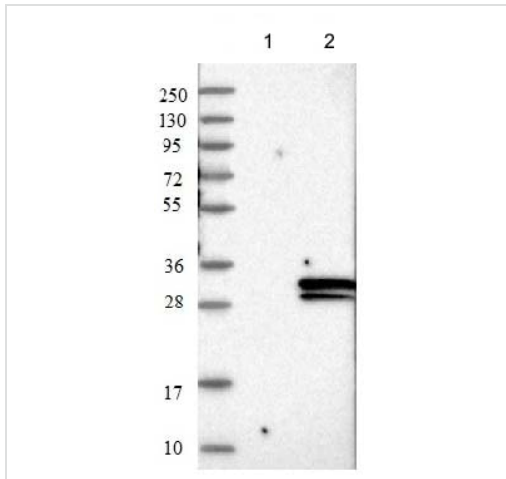
Secreted. Golgi apparatus.

## Images



Immunohistochemical analysis of formalin-fixed, paraffin-embedded human placenta tissue labeling FIBIN with ab122621 at 1/50.

Immunohistochemistry (Formalin/PFA-fixed paraffin-embedded sections) - Anti-FIBIN antibody (ab122621)



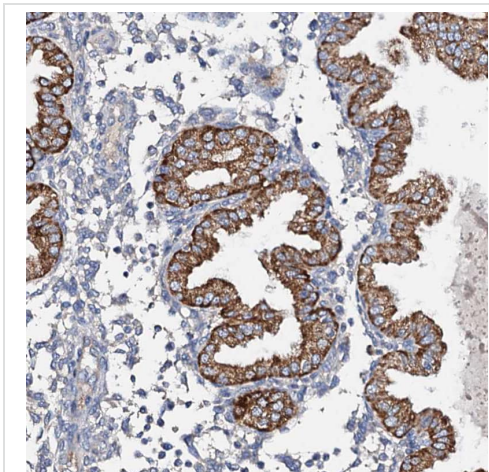
Western blot - Anti-FIBIN antibody (ab122621)

**All lanes** : Anti-FIBIN antibody (ab122621) at 1/250 dilution

**Lane 1** : Negative control (vector only transfected HEK293T lysate)

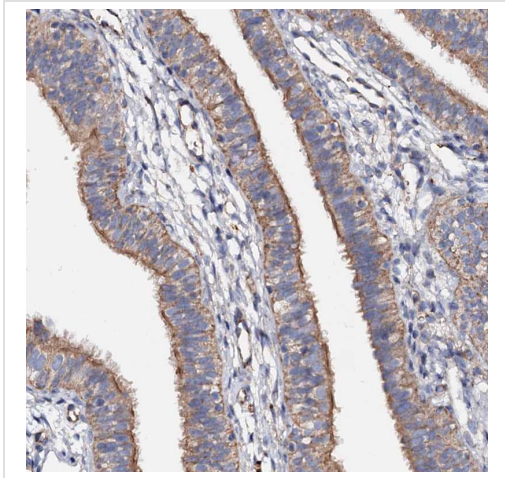
**Lane 2** : FIBIN Over-expression HEK293T Lysate (Co-expressed with a C-terminal myc-DDK tag (~3.1 kDa))

Developed using the ECL technique.



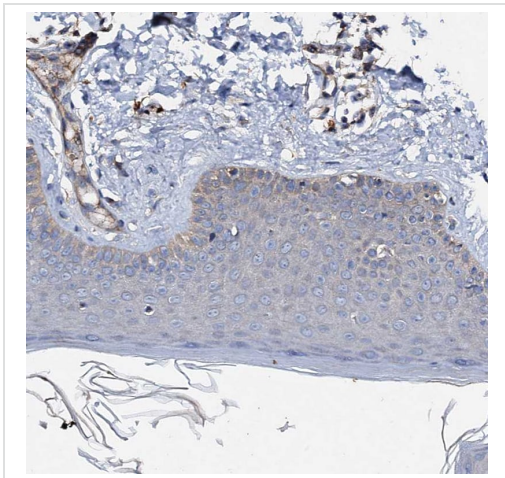
Immunohistochemistry (Formalin/PFA-fixed paraffin-embedded sections) - Anti-FIBIN antibody (ab122621)

Immunohistochemical analysis of formalin-fixed, paraffin-embedded human fallopian tube tissue labeling FIBIN with ab122621 at 1/50.



Immunohistochemical analysis of formalin-fixed, paraffin-embedded human endometrium tissue labeling FIBIN with ab122621 at 1/50.

Immunohistochemistry (Formalin/PFA-fixed paraffin-embedded sections) - Anti-FIBIN antibody (ab122621)



Immunohistochemical analysis of formalin-fixed, paraffin-embedded human skin tissue labeling FIBIN with ab122621 at 1/50.

Immunohistochemistry (Formalin/PFA-fixed paraffin-embedded sections) - Anti-FIBIN antibody (ab122621)

**Please note:** All products are "FOR RESEARCH USE ONLY. NOT FOR USE IN DIAGNOSTIC PROCEDURES"

#### **Our Promise to you: Quality guaranteed and expert technical support**

- Replacement or refund for products not performing as stated on the datasheet
- Valid for 12 months from date of delivery
- Response to your inquiry within 24 hours

- We provide support in Chinese, English, French, German, Japanese and Spanish
- Extensive multi-media technical resources to help you
- We investigate all quality concerns to ensure our products perform to the highest standards

If the product does not perform as described on this datasheet, we will offer a refund or replacement. For full details of the Abpromise, please visit <https://www.abcam.com/abpromise> or contact our technical team.

### **Terms and conditions**

---

- Guarantee only valid for products bought direct from Abcam or one of our authorized distributors