

Product datasheet

Anti-Fibrinogen alpha chain antibody ab231946

5 Images

Overview

Product name	Anti-Fibrinogen alpha chain antibody
Description	Rabbit polyclonal to Fibrinogen alpha chain
Host species	Rabbit
Tested applications	Suitable for: IHC-P, WB
Species reactivity	Reacts with: Mouse, Human
Immunogen	<p>Recombinant fragment (His-T7-tag) corresponding to Mouse Fibrinogen alpha chain aa 34-255. N-terminal tags. Expressed in E.coli.</p> <p>Sequence:</p> <p>GVRGPRVVERHQSQCKDSDWPFCSDDDWNHKCPSGC RMKGLIDEANQDFT NRINKLKNSLFDQQRNNKDSNSLTRNIMEYLRGDFANANN FDNTYGQVSE DLRRRIELRRKVIEKAQQIQALQSNVRAQLIDMKRLEVDIDI KIRSCKG SCSRAVNREINLQDYEGHQKQLQQVIAKELLPTKDRQYLP ALKMSPVPDL VPGSFKSQLQEAPPEWKALTEM</p>

Database link: [E9PV24](#)

 [Run BLAST with](#)

 [Run BLAST with](#)

Positive control IHC-P: Mouse liver tissue. WB: Mouse liver and kidney lysates; Human serum; Recombinant mouse Fibrinogen alpha chain protein.

General notes

Reproducibility is key to advancing scientific discovery and accelerating scientists' next breakthrough.

Abcam is leading the way with our range of recombinant antibodies, knockout-validated antibodies and knockout cell lines, all of which support improved reproducibility.

We are also planning to innovate the way in which we present recommended applications and species on our product datasheets, so that only applications & species that have been tested in our own labs, our suppliers or by selected trusted collaborators are covered by our Abpromise™ guarantee.

In preparation for this, we have started to update the applications & species that this product is Abpromise guaranteed for.

We are also updating the applications & species that this product has been “predicted to work

with," however this information is not covered by our Abpromise guarantee.

Applications & species from publications and Abreviews that have not been tested in our own labs or in those of our suppliers are not covered by the Abpromise guarantee.

Please check that this product meets your needs before purchasing. If you have any questions, special requirements or concerns, please send us an inquiry and/or contact our Support team ahead of purchase. Recommended alternatives for this product can be found below, as well as customer reviews and Q&As.

Properties

Form	Liquid
Storage instructions	Shipped at 4°C. Store at +4°C short term (1-2 weeks). Upon delivery aliquot. Store at -20°C long term. Avoid freeze / thaw cycle.
Storage buffer	pH: 7.40 Preservative: 0.02% Sodium azide Constituents: PBS, 50% Glycerol
Purity	Immunogen affinity purified
Purification notes	ab231946 was purified by antigen-specific affinity chromatography followed by Protein A affinity chromatography.
Clonality	Polyclonal
Isotype	IgG

Applications

Our [Abpromise guarantee](#) covers the use of **ab231946** in the following tested applications.

The application notes include recommended starting dilutions; optimal dilutions/concentrations should be determined by the end user.

Application	Abreviews	Notes
IHC-P		Use a concentration of 5 - 20 µg/ml.
WB		Use a concentration of 0.2 - 2 µg/ml. Predicted molecular weight: 87 kDa.

Target

Function	Fibrinogen has a double function: yielding monomers that polymerize into fibrin and acting as a cofactor in platelet aggregation.
Tissue specificity	Plasma.
Involvement in disease	Defects in FGA are a cause of congenital afibrinogenemia (CAFBN) [MIM:202400]. This is a rare autosomal recessive disorder characterized by bleeding that varies from mild to severe and by complete absence or extremely low levels of plasma and platelet fibrinogen. Note=The majority of cases of afibrinogenemia are due to truncating mutations. Variations in position Arg-35 (the site of cleavage of fibrinopeptide a by thrombin) leads to alpha-dysfibrinogenemias. Defects in FGA are a cause of amyloidosis type 8 (AMYL8) [MIM:105200]; also known as

systemic non-neuropathic amyloidosis or Ostertag-type amyloidosis. AMYL8 is a hereditary generalized amyloidosis due to deposition of apolipoprotein A1, fibrinogen and lysozyme amyloids. Viscera are particularly affected. There is no involvement of the nervous system. Clinical features include renal amyloidosis resulting in nephrotic syndrome, arterial hypertension, hepatosplenomegaly, cholestasis, petechial skin rash.

Sequence similarities

Contains 1 fibrinogen C-terminal domain.

Domain

A long coiled coil structure formed by 3 polypeptide chains connects the central nodule to the C-terminal domains (distal nodules). The long C-terminal ends of the alpha chains fold back, contributing a fourth strand to the coiled coil structure.

Post-translational modifications

The alpha chain is not glycosylated.

Forms F13A-mediated cross-links between a glutamine and the epsilon-amino group of a lysine residue, forming fibronectin-fibrinogen heteropolymers.

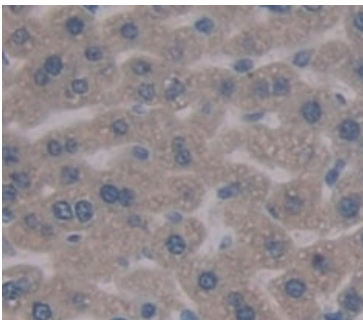
About one-third of the alpha chains in the molecules in blood were found to be phosphorylated. Conversion of fibrinogen to fibrin is triggered by thrombin, which cleaves fibrinopeptides A and B from alpha and beta chains, and thus exposes the N-terminal polymerization sites responsible for the formation of the soft clot. The soft clot is converted into the hard clot by factor XIIIa which catalyzes the epsilon-(gamma-glutamyl)lysine cross-linking between gamma chains (stronger) and between alpha chains (weaker) of different monomers.

Phosphorylation sites are present in the extracellular medium.

Cellular localization

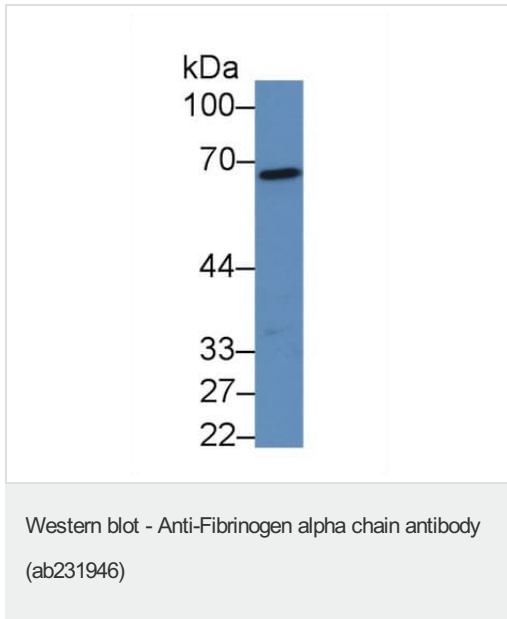
Secreted.

Images



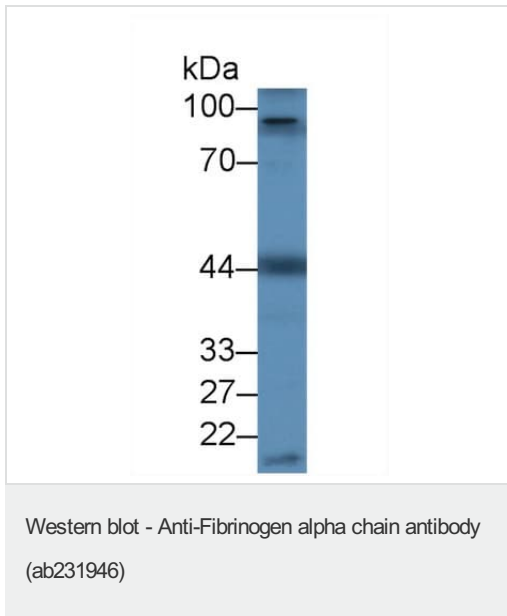
Formalin-fixed, paraffin-embedded mouse liver tissue stained for Fibrinogen alpha chain using ab231946 at 20 µg/ml in immunohistochemical analysis. DAB staining.

Immunohistochemistry (Formalin/PFA-fixed paraffin-embedded sections) - Anti-Fibrinogen alpha chain antibody (ab231946)



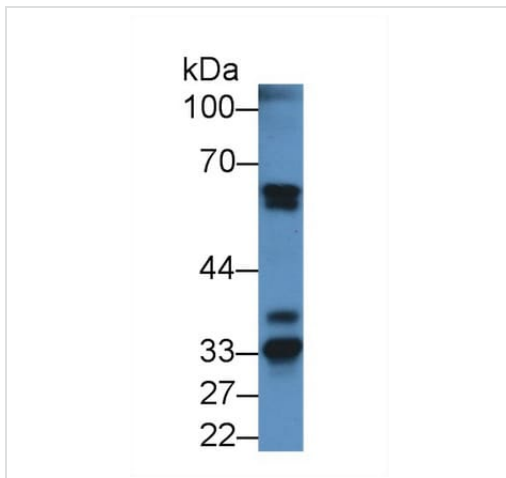
Anti-Fibrinogen alpha chain antibody (ab231946) at 2 $\mu\text{g/ml}$ +
Mouse liver lysate

Predicted band size: 87 kDa



Anti-Fibrinogen alpha chain antibody (ab231946) at 2 $\mu\text{g/ml}$ +
Human serum

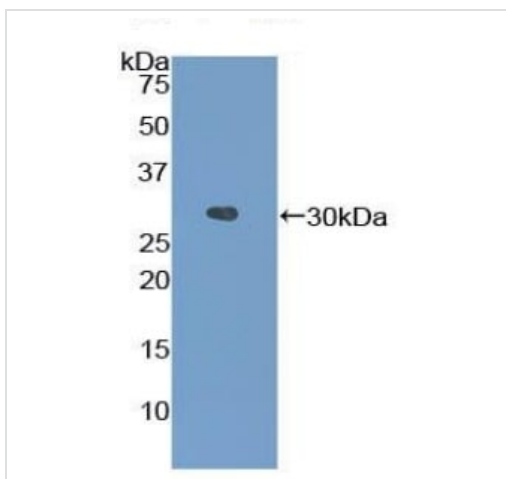
Predicted band size: 87 kDa



Anti-Fibrinogen alpha chain antibody (ab231946) at 2 µg/ml +
 Mouse kidney lysate

Predicted band size: 87 kDa

Western blot - Anti-Fibrinogen alpha chain antibody
 (ab231946)



Anti-Fibrinogen alpha chain antibody (ab231946) at 2 µg/ml +
 Recombinant mouse Fibrinogen alpha chain protein

Predicted band size: 87 kDa

Western blot - Anti-Fibrinogen alpha chain antibody
 (ab231946)

Please note: All products are "FOR RESEARCH USE ONLY. NOT FOR USE IN DIAGNOSTIC PROCEDURES"

Our Abpromise to you: Quality guaranteed and expert technical support

- Replacement or refund for products not performing as stated on the datasheet
- Valid for 12 months from date of delivery
- Response to your inquiry within 24 hours
- We provide support in Chinese, English, French, German, Japanese and Spanish

- Extensive multi-media technical resources to help you
- We investigate all quality concerns to ensure our products perform to the highest standards

If the product does not perform as described on this datasheet, we will offer a refund or replacement. For full details of the Abpromise, please visit <https://www.abcam.com/abpromise> or contact our technical team.

Terms and conditions

- Guarantee only valid for products bought direct from Abcam or one of our authorized distributors