



Product datasheet

Anti-Fibrinogen beta chain antibody ab232793

3 Images

Overview

Product name	Anti-Fibrinogen beta chain antibody
Description	Rabbit polyclonal to Fibrinogen beta chain
Host species	Rabbit
Tested applications	Suitable for: IHC-P, WB
Species reactivity	Reacts with: Mouse, Human, Pig
Immunogen	<p>Recombinant full length protein (His-tag) corresponding to Human Fibrinogen beta chain aa 45-491. Mature chain. Expressed in E.coli.</p> <p>Sequence:</p> <pre>GHRPLDKKREEAPSLRPAPPPISGGGYRARPAAAAAT QKKVERKAPDAGG CLHADPDLGVLCPGTCQLQEALLQQERPIRNSVDELN NNVEAVSQTSSSS FQYMYLLKDLWQKRQKQVKNENVVNEYSSELEKHQ LYIDETVNSNIPTN LRVLRISILENLRSKIQKLESDVSAQMEYCRTPCTVSCNI PVVSGKECEEI IRKGGETSEMYLIQPDSSVKPYRVYCDMNTENGGWTVI QNRQDGSVDFGR KWDPTYKQGFGNVATNTDGKNYCGLPGEYWLGNDKIS QLTRMGPTELLIEM EDWKGDKVKAHYGGFTVQNEANKYQISVNKYRGTAG NALMDGASQLMGEN RTMTIHNGMFFSTYDRDNDGWLTSDPRKQCSKEDGG GWWYNRCHAANPNG RYYWGGQYTWDMAKHGTDDGVVWMNWKGSWYSMR KMSMKIRPFFPQQ</pre> <p>Database link: P02675</p> <div style="text-align: right;">  Run BLAST with  Run BLAST with </div>
Positive control	WB: Recombinant human Fibrinogen beta chain; Human urine; Mouse heart lysate; Pig brain lysate. IHC-P: Human liver tissue.

Properties

Form	Liquid
Storage instructions	Shipped at 4°C. Store at +4°C short term (1-2 weeks). Upon delivery aliquot. Store at -20°C long term. Avoid freeze / thaw cycle.
Storage buffer	pH: 7.40 Preservative: 0.02% Sodium azide Constituents: PBS, 50% Glycerol
Purity	Immunogen affinity purified
Purification notes	Antigen-specific affinity chromatography followed by Protein A affinity chromatography.
Clonality	Polyclonal
Isotype	IgG

Applications

Our [Abpromise guarantee](#) covers the use of **ab232793** in the following tested applications.

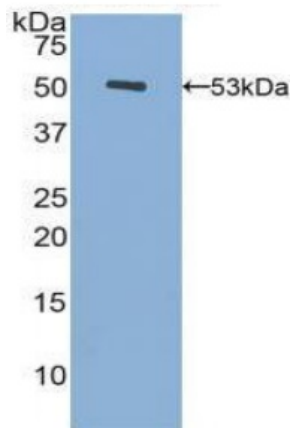
The application notes include recommended starting dilutions; optimal dilutions/concentrations should be determined by the end user.

Application	Abreviews	Notes
IHC-P		Use a concentration of 5 - 20 µg/ml.
WB		Use a concentration of 0.5 - 2 µg/ml. Predicted molecular weight: 56 kDa.

Target

Function	Fibrinogen has a double function: yielding monomers that polymerize into fibrin and acting as a cofactor in platelet aggregation.
Involvement in disease	Defects in FGB are a cause of congenital afibrinogenemia (CAFBN) [MIM:202400]. This rare autosomal recessive disorder is characterized by bleeding that varies from mild to severe and by complete absence or extremely low levels of plasma and platelet fibrinogen. Note=Patients with congenital fibrinogen abnormalities can manifest different clinical pictures. Some cases are clinically silent, some show a tendency toward bleeding and some show a predisposition for thrombosis with or without bleeding.
Sequence similarities	Contains 1 fibrinogen C-terminal domain.
Domain	A long coiled coil structure formed by 3 polypeptide chains connects the central nodule to the C-terminal domains (distal nodules). The long C-terminal ends of the alpha chains fold back, contributing a fourth strand to the coiled coil structure.
Post-translational modifications	Conversion of fibrinogen to fibrin is triggered by thrombin, which cleaves fibrinopeptides A and B from alpha and beta chains, and thus exposes the N-terminal polymerization sites responsible for the formation of the soft clot. The soft clot is converted into the hard clot by factor XIIIa which catalyzes the epsilon-(gamma-glutamyl)lysine cross-linking between gamma chains (stronger) and between alpha chains (weaker) of different monomers.
Cellular localization	Secreted.

Images



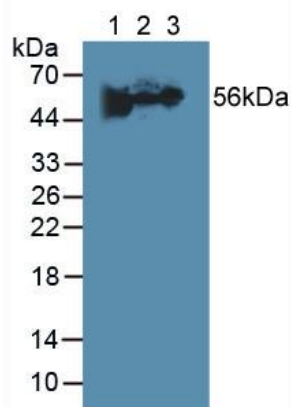
Western blot - Anti-Fibrinogen beta chain antibody (ab232793)

Anti-Fibrinogen beta chain antibody (ab232793) at 2 µg +
Recombinant human Fibrinogen beta chain protein

Secondary

HRP-Linked Guinea pig anti-Rabbit at 1/2000 dilution

Predicted band size: 56 kDa



Western blot - Anti-Fibrinogen beta chain antibody (ab232793)

All lanes : Anti-Fibrinogen beta chain antibody (ab232793) at 2 µg/ml

Lane 1 : Human urine

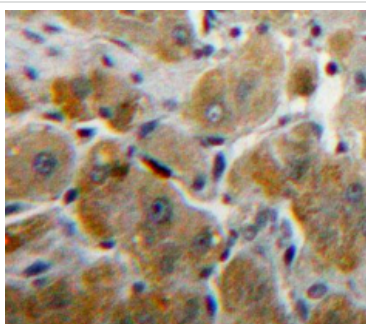
Lane 2 : Mouse heart lysate

Lane 3 : Pig brain lysate

Secondary

All lanes : HRP-Linked Guinea pig anti-Rabbit at 1/2000 dilution

Predicted band size: 56 kDa



Immunohistochemistry (Formalin/PFA-fixed paraffin-embedded sections) - Anti-Fibrinogen beta chain antibody (ab232793)

Formalin-fixed, paraffin-embedded human liver tissue stained for Fibrinogen beta chain using ab232793 at 20 µg/ml in immunohistochemical analysis. DAB staining.

Our Abpromise to you: Quality guaranteed and expert technical support

- Replacement or refund for products not performing as stated on the datasheet
- Valid for 12 months from date of delivery
- Response to your inquiry within 24 hours

- We provide support in Chinese, English, French, German, Japanese and Spanish
- Extensive multi-media technical resources to help you
- We investigate all quality concerns to ensure our products perform to the highest standards

If the product does not perform as described on this datasheet, we will offer a refund or replacement. For full details of the Abpromise, please visit <https://www.abcam.com/abpromise> or contact our technical team.

Terms and conditions

- Guarantee only valid for products bought direct from Abcam or one of our authorized distributors