




Product datasheet

Anti-Fibulin 7 antibody - C-terminal ab178022

1 Image

Overview

Product name	Anti-Fibulin 7 antibody - C-terminal
Description	Rabbit polyclonal to Fibulin 7 - C-terminal
Host species	Rabbit
Tested applications	Suitable for: WB
Species reactivity	Reacts with: Human Predicted to work with: Mouse, Rat, Rabbit, Horse, Guinea pig, Cow, Cat, Dog, Zebrafish 
Immunogen	Synthetic peptide within Human Fibulin 7 aa 251-300 (C terminal). The exact sequence is proprietary. Sequence: VMQRSDRQTGDLILVQNLEGPQTLEVDVDMSEYLDRS FQANHVSKVTIFV Database link: Q53RD9-4  Run BLAST with  Run BLAST with
Positive control	OVCAR 3 whole cell lysate.

Properties

Form	Liquid
Storage instructions	Shipped at 4°C. Store at +4°C short term (1-2 weeks). Upon delivery aliquot. Store at -20°C long term. Avoid freeze / thaw cycle.
Storage buffer	Preservative: 0.09% Sodium azide Constituents: 2% Sucrose, PBS
Purity	Immunogen affinity purified
Clonality	Polyclonal
Isotype	IgG

Applications

Our [Abpromise guarantee](#) covers the use of **ab178022** in the following tested applications.

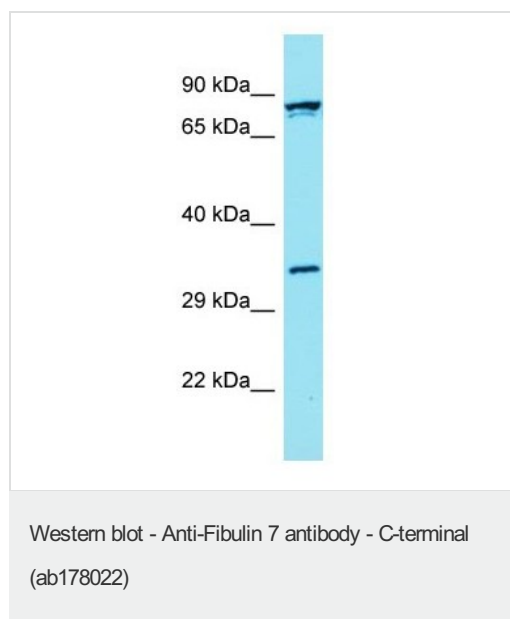
The application notes include recommended starting dilutions; optimal dilutions/concentrations should be determined by the end user.

Application	Abreviews	Notes
WB		Use a concentration of 1 µg/ml. Predicted molecular weight: 33 kDa.

Target

Function	An adhesion molecule that interacts with extracellular matrix molecules in developing teeth and may play important roles in differentiation and maintenance of odontoblasts as well as in dentin formation.
Sequence similarities	Belongs to the fibulin family. Contains 2 EGF-like domains. Contains 1 Sushi (CCP/SCR) domain.
Post-translational modifications	N-glycosylated.
Cellular localization	Secreted > extracellular space > extracellular matrix.

Images



Anti-Fibulin 7 antibody - C-terminal (ab178022) at 1 µg/ml +
OVCAR 3 whole cell lysate at 10 µg

Predicted band size: 33 kDa

Please note: All products are "FOR RESEARCH USE ONLY. NOT FOR USE IN DIAGNOSTIC PROCEDURES"

Our Abpromise to you: Quality guaranteed and expert technical support

- Replacement or refund for products not performing as stated on the datasheet
- Valid for 12 months from date of delivery
- Response to your inquiry within 24 hours
- We provide support in Chinese, English, French, German, Japanese and Spanish

- Extensive multi-media technical resources to help you
- We investigate all quality concerns to ensure our products perform to the highest standards

If the product does not perform as described on this datasheet, we will offer a refund or replacement. For full details of the Abpromise, please visit <https://www.abcam.com/abpromise> or contact our technical team.

Terms and conditions

- Guarantee only valid for products bought direct from Abcam or one of our authorized distributors