




Product datasheet

Anti-FILGAP antibody ab203874

4 References 2 Images

Overview

Product name	Anti-FILGAP antibody
Description	Rabbit polyclonal to FILGAP
Host species	Rabbit
Tested applications	Suitable for: IHC-P, WB
Species reactivity	Reacts with: Rat, Human Predicted to work with: Mouse 
Immunogen	Synthetic peptide within Human FILGAP aa 630-680 conjugated to keyhole limpet haemocyanin. The exact sequence is proprietary. Sequence: SETFVGNSSSN HSALHSLVSS LKQEMTKQKI EYESRIKSLE QRNLTLETEM Database link: Q8N264  Run BLAST with  Run BLAST with
Positive control	Human lung carcinoma tissue; Rat kidney lysate; Human colon carcinoma lysate.
General notes	This product was previously labelled as Rho GTPase-activating protein 24

Reproducibility is key to advancing scientific discovery and accelerating scientists' next breakthrough.

Abcam is leading the way with our range of recombinant antibodies, knockout-validated antibodies and knockout cell lines, all of which support improved reproducibility.

We are also planning to innovate the way in which we present recommended applications and species on our product datasheets, so that only applications & species that have been tested in our own labs, our suppliers or by selected trusted collaborators are covered by our Abpromise™ guarantee.

In preparation for this, we have started to update the applications & species that this product is Abpromise guaranteed for.

We are also updating the applications & species that this product has been “predicted to work with,” however this information is not covered by our Abpromise guarantee.

Applications & species from publications and Abreviews that have not been tested in our own labs or in those of our suppliers are not covered by the Abpromise guarantee.

Please check that this product meets your needs before purchasing. If you have any questions, special requirements or concerns, please send us an inquiry and/or contact our Support team ahead of purchase. Recommended alternatives for this product can be found below, as well as customer reviews and Q&As.

Properties

Form	Liquid
Storage instructions	Shipped at 4°C. Store at +4°C short term (1-2 weeks). Upon delivery aliquot. Store at -20°C long term. Avoid freeze / thaw cycle.
Storage buffer	Preservative: 0.09% Sodium azide Constituents: 1% BSA, 50% Glycerol
Purity	Protein A purified
Clonality	Polyclonal
Isotype	IgG

Applications

Our [Abpromise guarantee](#) covers the use of **ab203874** in the following tested applications.

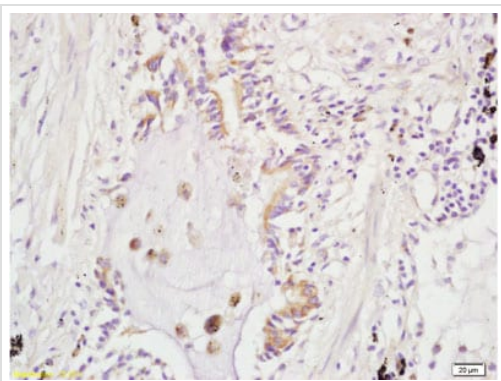
The application notes include recommended starting dilutions; optimal dilutions/concentrations should be determined by the end user.

Application	Abreviews	Notes
IHC-P		1/100 - 1/500.
WB		1/100 - 1/1000. Detects a band of approximately 84 kDa (predicted molecular weight: 84 kDa).

Target

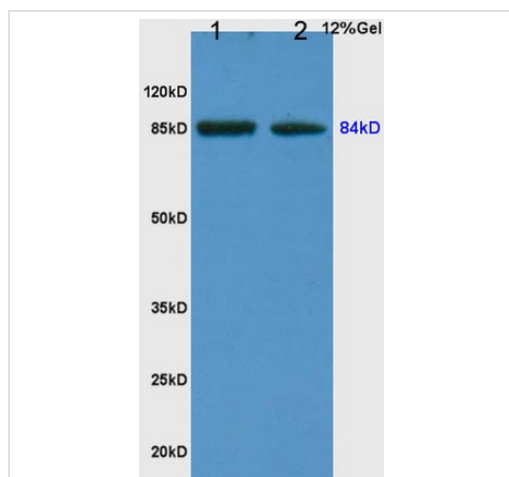
Relevance	ARHGAP24 is a rho GTPase-activating protein involved in cell polarity, cell morphology and cytoskeletal organization. It acts as a GTPase activator for the Rac-type GTPase by converting it to an inactive GDP-bound state. It controls actin remodeling by inactivating Rac downstream of Rho leading to suppress leading edge protrusion and promotes cell retraction to achieve cellular polarity. There are five different isoforms. Isoform 1 is widely expressed with a higher level in kidney. Isoform 2 is mainly expressed in endothelial cells and is involved in modulation of angiogenesis.
Cellular localization	Cytoplasmic, cytoskeleton. Cell junction: adherens junction, focal adhesion. Cell projection.

Images



Immunohistochemistry (Formalin/PFA-fixed paraffin-embedded sections) - Anti-FILGAP antibody (ab203874)

Immunohistochemical analysis of formalin-fixed, paraffin-embedded Human lung carcinoma tissue labeling FILGAP with ab203874 at 1/200 dilution followed by conjugation to the secondary antibody and DAB staining.



Western blot - Anti-FILGAP antibody (ab203874)

All lanes : Anti-FILGAP antibody (ab203874) at 1/200 dilution

Lane 1 : Human colon carcinoma lysate

Lane 2 : Rat kidney lysate

Secondary

All lanes : Goat Anti-Rabbit IgG Antibody (H+L), HRP Conjugated at 1/3000 dilution

Predicted band size: 84 kDa

Please note: All products are "FOR RESEARCH USE ONLY. NOT FOR USE IN DIAGNOSTIC PROCEDURES"

Our Abpromise to you: Quality guaranteed and expert technical support

- Replacement or refund for products not performing as stated on the datasheet
- Valid for 12 months from date of delivery
- Response to your inquiry within 24 hours
- We provide support in Chinese, English, French, German, Japanese and Spanish
- Extensive multi-media technical resources to help you
- We investigate all quality concerns to ensure our products perform to the highest standards

If the product does not perform as described on this datasheet, we will offer a refund or replacement. For full details of the Abpromise,

please visit <https://www.abcam.com/abpromise> or contact our technical team.

Terms and conditions

- Guarantee only valid for products bought direct from Abcam or one of our authorized distributors