


## Product datasheet

# Anti-FIP200 antibody ab227726

★★★★☆ 2 Abreviews 1 References 3 Images

### Overview

---

|                            |   |
|----------------------------|---|
| <b>Product name</b>        | Anti-FIP200 antibody  |
| <b>Description</b>         | Rabbit polyclonal to FIP200   |
| <b>Host species</b>        | Rabbit  |
| <b>Tested applications</b> | <b>Suitable for:</b> WB, ICC/IF   |
| <b>Species reactivity</b>  | <b>Reacts with:</b> Human<br><b>Predicted to work with:</b> Rhesus monkey    |
| <b>Immunogen</b>           | Recombinant fragment within Human FIP200 (N terminal). The exact sequence is proprietary.<br>Database link: <a href="#">Q8TDY2</a>  |
| <b>Positive control</b>    | WB: HEK-293T and A431 whole cell lysate; FIP200-transfected HEK-293T whole cell lysate.<br>ICC/IF: HeLa cells.  |
| <b>General notes</b>       | <p>Reproducibility is key to advancing scientific discovery and accelerating scientists' next breakthrough.</p> <p>Abcam is leading the way with our range of recombinant antibodies, knockout-validated antibodies and knockout cell lines, all of which support improved reproducibility.</p> <p>We are also planning to innovate the way in which we present recommended applications and species on our product datasheets, so that only applications &amp; species that have been tested in our own labs, our suppliers or by selected trusted collaborators are covered by our Abpromise™ guarantee.</p> <p>In preparation for this, we have started to update the applications &amp; species that this product is Abpromise guaranteed for.</p> <p>We are also updating the applications &amp; species that this product has been “predicted to work with,” however this information is not covered by our Abpromise guarantee.</p> <p>Applications &amp; species from publications and Abreviews that have not been tested in our own labs or in those of our suppliers are not covered by the Abpromise guarantee.</p> <p>Please check that this product meets your needs before purchasing. If you have any questions, special requirements or concerns, please send us an inquiry and/or contact our Support team ahead of purchase. Recommended alternatives for this product can be found below, as well as customer reviews and Q&amp;As.</p> |

### Properties

---

|                             |   |
|-----------------------------|---|
| <b>Form</b>                 | Liquid  |
| <b>Storage instructions</b> | Shipped at 4°C. Store at +4°C short term (1-2 weeks). Upon delivery aliquot. Store at -20°C long term. Avoid freeze / thaw cycle. |
| <b>Storage buffer</b>       | pH: 7.00<br>Preservative: 0.025% Proclin 300<br>Constituents: 79% PBS, 20% Glycerol (glycerin, glycerine)                         |
| <b>Purity</b>               | Immunogen affinity purified   |
| <b>Clonality</b>            | Polyclonal  |
| <b>Isotype</b>              | IgG   |

## Applications

Our [Abpromise guarantee](#) covers the use of **ab227726** in the following tested applications.

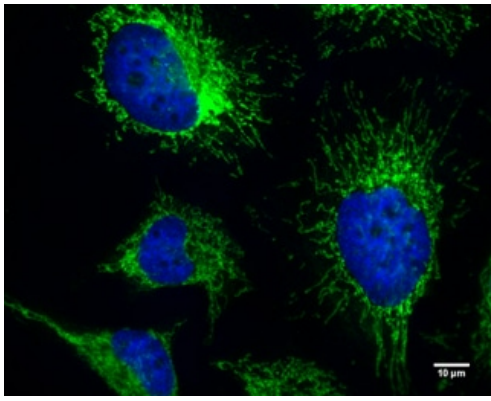
The application notes include recommended starting dilutions; optimal dilutions/concentrations should be determined by the end user.

| Application | Abreviews | Notes  |
|-------------|-----------|--|
| WB          | ★★★★☆     | 1/1000 - 1/10000. Predicted molecular weight: 183 kDa. |
| ICC/IF      |           | 1/100 - 1/1000.  |

## Target

|                              |   |
|------------------------------|---|
| <b>Function</b>              | Implicated in the regulation of RB1 expression. Functions as a DNA-binding transcription factor. Is a potent regulator of the RB1 pathway and a mediator that plays a crucial role in muscular differentiation. Expression is, thus, a prerequisite for myogenic differentiation. Involved in autophagy. Required for autophagosome formation (By similarity). Inhibits PTK2/FAK1 and PTK2B/PYK2 activity and activation of downstream signaling pathways.  |
| <b>Tissue specificity</b>    | Expression levels correlated closely with those of RB1 in cancer cell lines as well as in various normal human tissues. Abundantly expressed in human musculoskeletal and cultured osteosarcoma cells.  |
| <b>Developmental stage</b>   | Expression was difficult to detect in immature proliferating chondroblasts or myogenic cells in embryos, but became obvious and prominent concomitantly with the maturation of osteocytes, chondrocytes, and skeletal muscle cells. Expression in these musculoskeletal cells increased with RB1 expression, which is linked to the terminal differentiation of many tissues and cells. The introduction of the wild-type protein decreased the formation of macroscopic colonies in a cell growth assay. |
| <b>Cellular localization</b> | Nucleus. Cytoplasm > cytosol. Preautophagosomal structure. Under starvation conditions, is localized to punctate structures primarily representing the isolation membrane that sequesters a portion of the cytoplasm resulting in the formation of an autophagosome.  |

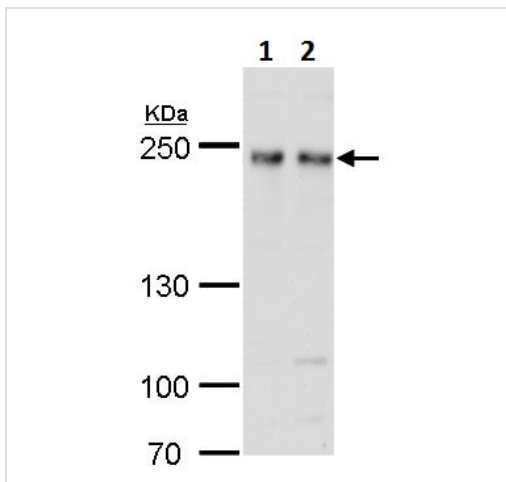
## Images



Immunocytochemistry/ Immunofluorescence - Anti-FIP200 antibody (ab227726)

4% paraformaldehyde-fixed HeLa (human epithelial cell line from cervix adenocarcinoma) cells stained for FIP200 (green) using ab227726 at 1/200 dilution in ICC/IF.

Blue: Hoechst 33342 staining.



Western blot - Anti-FIP200 antibody (ab227726)

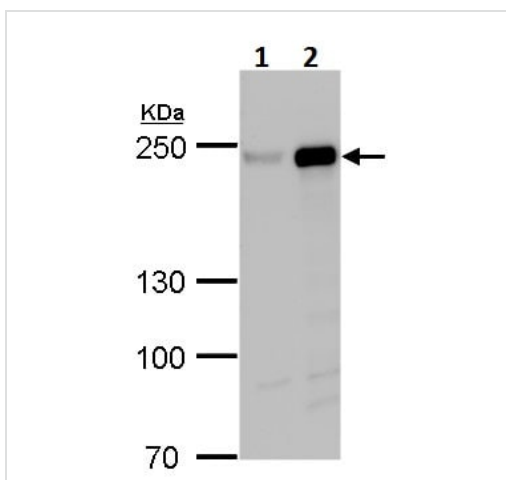
**All lanes :** Anti-FIP200 antibody (ab227726) at 1/1000 dilution

**Lane 1 :** HEK-293T (human epithelial cell line from embryonic kidney transformed with large T antigen) whole cell lysate

**Lane 2 :** A431 (human epidermoid carcinoma cell line) whole cell lysate

Lysates/proteins at 30 µg per lane.

**Predicted band size:** 183 kDa



Western blot - Anti-FIP200 antibody (ab227726)

**All lanes :** Anti-FIP200 antibody (ab227726) at 1/5000 dilution

**Lane 1 :** HEK-293T (human epithelial cell line from embryonic kidney transformed with large T antigen) whole cell lysate

**Lane 2 :** FIP200-transfected HEK-293T whole cell lysate

Lysates/proteins at 30 µg per lane.

**Predicted band size:** 183 kDa

5 % SDS-PAGE gel.

**Please note:** All products are "FOR RESEARCH USE ONLY. NOT FOR USE IN DIAGNOSTIC PROCEDURES"

### **Our Abpromise to you: Quality guaranteed and expert technical support**

---

- Replacement or refund for products not performing as stated on the datasheet
- Valid for 12 months from date of delivery
- Response to your inquiry within 24 hours
  
- We provide support in Chinese, English, French, German, Japanese and Spanish
- Extensive multi-media technical resources to help you
- We investigate all quality concerns to ensure our products perform to the highest standards

If the product does not perform as described on this datasheet, we will offer a refund or replacement. For full details of the Abpromise, please visit <https://www.abcam.com/abpromise> or contact our technical team.

### **Terms and conditions**

---

- Guarantee only valid for products bought direct from Abcam or one of our authorized distributors