

Product datasheet

FITC Anti-CD1a antibody [HI149] ab18231

1 Image

Overview

Product name	FITC Anti-CD1a antibody [HI149]
Description	FITC Mouse monoclonal [HI149] to CD1a
Host species	Mouse
Conjugation	FITC. Ex: 493nm, Em: 528nm
Specificity	This antibody does not react with peripheral blood T and B lymphocytes, monocytes, granulocytes, platelets and erythrocytes.
Tested applications	Suitable for: Flow Cyt
Species reactivity	Reacts with: Human
Immunogen	Tissue, cells or virus corresponding to Human CD1a. Human thymocytes
Positive control	Flow Cyt: Human MOLT-4 cells.
General notes	<p>This reagent is free of unconjugated FITC and adjusted for direct use.</p> <p>The Life Science industry has been in the grips of a reproducibility crisis for a number of years. Abcam is leading the way in addressing this with our range of recombinant monoclonal antibodies and knockout edited cell lines for gold-standard validation. Please check that this product meets your needs before purchasing.</p> <p>If you have any questions, special requirements or concerns, please send us an inquiry and/or contact our Support team ahead of purchase. Recommended alternatives for this product can be found below, along with publications, customer reviews and Q&As</p>

Properties

Form	Liquid
Storage instructions	Shipped at 4°C. Store at +4°C.
Storage buffer	pH: 7.40 Preservative: 0.097% Sodium azide Constituents: PBS, BSA
Clonality	Monoclonal
Clone number	HI149
Isotype	IgG1

Applications

The Abpromise guarantee

Our [Abpromise guarantee](#) covers the use of ab18231 in the following tested applications.

The application notes include recommended starting dilutions; optimal dilutions/concentrations should be determined by the end user.

Application	Abreviews	Notes
Flow Cyt		

Application notes

Flow Cyt: Use 20µl for 10 million cells.

Not tested in other applications.

Optimal dilutions/concentrations should be determined by the end user.

Target

Function

Antigen-presenting protein that binds self and non-self lipid and glycolipid antigens and presents them to T-cell receptors on natural killer T-cells.

Tissue specificity

Expressed on cortical thymocytes, epidermal Langerhans cells, dendritic cells, on certain T-cell leukemias, and in various other tissues.

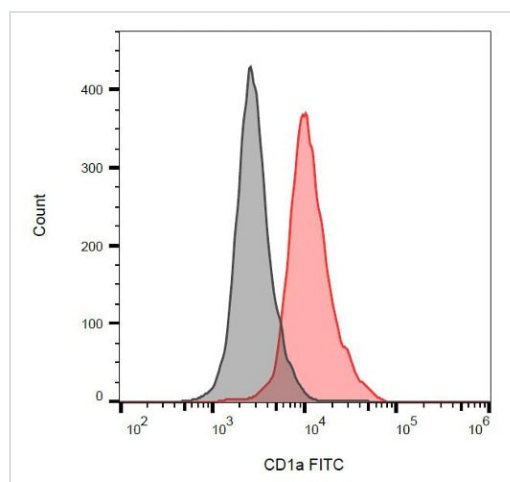
Sequence similarities

Contains 1 Ig-like (immunoglobulin-like) domain.

Cellular localization

Cell membrane. Endosome membrane. Subject to intracellular trafficking between the cell membrane and endosomes. Localizes to cell surface lipid rafts.

Images



Flow Cytometry analysis of MOLT4 cells (red) compared with blank (grey) labeling CD1a with Anti-CD1a antibody [HI149] (FITC) (ab18231).

Flow Cytometry - FITC Anti-CD1a antibody [HI149]
(ab18231)

Please note: All products are "FOR RESEARCH USE ONLY. NOT FOR USE IN DIAGNOSTIC PROCEDURES"

Our Abpromise to you: Quality guaranteed and expert technical support

- Replacement or refund for products not performing as stated on the datasheet
- Valid for 12 months from date of delivery
- Response to your inquiry within 24 hours

- We provide support in Chinese, English, French, German, Japanese and Spanish
- Extensive multi-media technical resources to help you
- We investigate all quality concerns to ensure our products perform to the highest standards

If the product does not perform as described on this datasheet, we will offer a refund or replacement. For full details of the Abpromise, please visit <https://www.abcam.com/abpromise> or contact our technical team.

Terms and conditions

- Guarantee only valid for products bought direct from Abcam or one of our authorized distributors