

Product datasheet

FITC Anti-CD31 antibody [B-B38] ab27333

6 References 1 Image

Overview

Product name	FITC Anti-CD31 antibody [B-B38]
Description	FITC Mouse monoclonal [B-B38] to CD31
Host species	Mouse
Conjugation	FITC. Ex: 493nm, Em: 528nm
Tested applications	Suitable for: Flow Cyt
Species reactivity	Reacts with: Human
Immunogen	Recombinant full length CD31 protein (Human).
General notes	<p>This product was changed from ascites to tissue culture supernatant on 19th June 2019. Please note that the dilutions may need to be adjusted accordingly. If you have any questions, please do not hesitate to contact our scientific support team.</p> <p>The Life Science industry has been in the grips of a reproducibility crisis for a number of years. Abcam is leading the way in addressing this with our range of recombinant monoclonal antibodies and knockout edited cell lines for gold-standard validation. Please check that this product meets your needs before purchasing.</p> <p>If you have any questions, special requirements or concerns, please send us an inquiry and/or contact our Support team ahead of purchase. Recommended alternatives for this product can be found below, along with publications, customer reviews and Q&As</p>

Properties

Form	Liquid
Storage instructions	Shipped at 4°C. Store at +4°C.
Storage buffer	pH: 7.30 Preservative: 0.1% Sodium azide Constituents: 94.9% PBS, 5% BSA
Purity	Tissue culture supernatant
Purification notes	Conjugated from an Affinity purified culture supernatant.
Clonality	Monoclonal
Clone number	B-B38
Myeloma	x63-Ag8.653

Isotype	IgG1
Light chain type	kappa

Applications

The Abpromise guarantee Our [Abpromise guarantee](#) covers the use of ab27333 in the following tested applications. The application notes include recommended starting dilutions; optimal dilutions/concentrations should be determined by the end user.

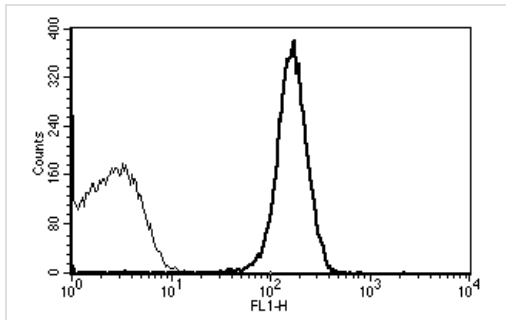
Application	Abreviews	Notes
Flow Cyt		<p>Use 10µl for 10⁶ cells. Use 10 µl to label 10⁶ cells or 100 µl of whole blood.</p> <p>ab91356 - Mouse monoclonal IgG1, is suitable for use as an isotype control with this antibody.</p>

Target

Function	<p>Induces susceptibility to atherosclerosis (By similarity). Cell adhesion molecule which is required for leukocyte transendothelial migration (TEM) under most inflammatory conditions. Tyr-690 plays a critical role in TEM and is required for efficient trafficking of PECAM1 to and from the lateral border recycling compartment (LBRC) and is also essential for the LBRC membrane to be targeted around migrating leukocytes. Prevents phagocyte ingestion of closely apposed viable cells by transmitting 'detachment' signals, and changes function on apoptosis, promoting tethering of dying cells to phagocytes (the encounter of a viable cell with a phagocyte via the homophilic interaction of PECAM1 on both cell surfaces leads to the viable cell's active repulsion from the phagocyte. During apoptosis, the inside-out signaling of PECAM1 is somehow disabled so that the apoptotic cell does not actively reject the phagocyte anymore. The lack of this repulsion signal together with the interaction of the eat-me signals and their respective receptors causes the attachment of the apoptotic cell to the phagocyte, thus triggering the process of engulfment). Isoform Delta15 is unable to protect against apoptosis. Modulates BDKRB2 activation. Regulates bradykinin- and hyperosmotic shock-induced ERK1/2 activation in human umbilical cord vein cells (HUVEC).</p>
Tissue specificity	<p>Expressed on platelets and leukocytes and is primarily concentrated at the borders between endothelial cells. Isoform Long predominates in all tissues examined. Isoform Delta12 is detected only in trachea. Isoform Delta14-15 is only detected in lung. Isoform Delta14 is detected in all tissues examined with the strongest expression in heart. Isoform Delta15 is expressed in brain, testis, ovary, cell surface of platelets, human umbilical vein endothelial cells (HUVECs), Jurkat T-cell leukemia, human erythroleukemia (HEL) and U937 histiocytic lymphoma cell lines (at protein level).</p>
Sequence similarities	<p>Contains 6 Ig-like C2-type (immunoglobulin-like) domains.</p>
Domain	<p>The Ig-like C2-type domains 2 and 3 contribute to formation of the complex with BDKRB2 and in regulation of its activity.</p>
Post-translational modifications	<p>Phosphorylated on Ser and Tyr residues after cellular activation. In endothelial cells Fyn mediates mechanical-force (stretch or pull) induced tyrosine phosphorylation.</p>
Cellular localization	<p>Membrane. Cell junction. Localizes to the lateral border recycling compartment (LBRC) and recycles from the LBRC to the junction in resting endothelial cells and Cell junction. Localizes to</p>

the lateral border recycling compartment (LBRC) and recycles from the LBRC to the junction in resting endothelial cells.

Images



Flow Cytometry - FITC Anti-CD31 antibody [B-B38]
(ab27333)

Ab27333, staining CD31 by FACS.

This image was generated using the ascites version of the product.

Please note: All products are "FOR RESEARCH USE ONLY. NOT FOR USE IN DIAGNOSTIC PROCEDURES"

Our Abpromise to you: Quality guaranteed and expert technical support

- Replacement or refund for products not performing as stated on the datasheet
- Valid for 12 months from date of delivery
- Response to your inquiry within 24 hours
- We provide support in Chinese, English, French, German, Japanese and Spanish
- Extensive multi-media technical resources to help you
- We investigate all quality concerns to ensure our products perform to the highest standards

If the product does not perform as described on this datasheet, we will offer a refund or replacement. For full details of the Abpromise, please visit <https://www.abcam.com/abpromise> or contact our technical team.

Terms and conditions

- Guarantee only valid for products bought direct from Abcam or one of our authorized distributors