

Product datasheet

FITC Anti-CD42a/GP-IX antibody [GR-P], prediluted
ab194810

1 Image

Overview

Product name	FITC Anti-CD42a/GP-IX antibody [GR-P], prediluted
Description	FITC Mouse monoclonal [GR-P] to CD42a/GP-IX, prediluted
Host species	Mouse
Conjugation	FITC. Ex: 493nm, Em: 528nm
Tested applications	Suitable for: Flow Cyt
Species reactivity	Reacts with: Human
Immunogen	Tissue, cells or virus corresponding to Human CD42a/GP-IX. (Human acute lymphoblastic leukemia cells).
General notes	<p>Previously labelled as CD42a.</p> <p>The Life Science industry has been in the grips of a reproducibility crisis for a number of years. Abcam is leading the way in addressing this with our range of recombinant monoclonal antibodies and knockout edited cell lines for gold-standard validation. Please check that this product meets your needs before purchasing.</p> <p>If you have any questions, special requirements or concerns, please send us an inquiry and/or contact our Support team ahead of purchase. Recommended alternatives for this product can be found below, along with publications, customer reviews and Q&As</p>

Properties

Form	Liquid
Storage instructions	Shipped at 4°C. Store at +4°C. Store In the Dark.
Storage buffer	<p>pH: 7.4</p> <p>Preservative: 0.097% Sodium azide</p> <p>Constituents: 99% PBS, 0.2% BSA</p>
Purity	Size exclusion
Purification notes	<p>Purified antibody is conjugated with Fluorescein isothiocyanate (FITC) under optimum conditions. The reagent is free of unconjugated FITC and adjusted for direct use. No reconstitution is necessary.</p>
Clonality	Monoclonal

Clone number	GR-P
Isotype	IgG1

Applications

The Abpromise guarantee Our [Abpromise guarantee](#) covers the use of ab194810 in the following tested applications. The application notes include recommended starting dilutions; optimal dilutions/concentrations should be determined by the end user.

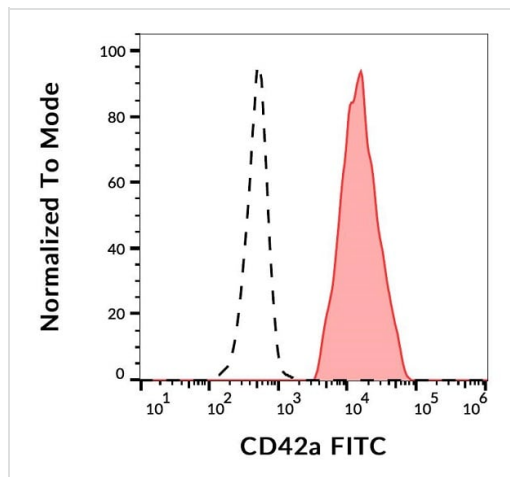
Application	Abreviews	Notes
Flow Cyt		Use 4µl for 10 ⁶ cells. (or 100 µl of whole blood).

Target

Function	The GPIb-V-IX complex functions as the vWF receptor and mediates vWF-dependent platelet adhesion to blood vessels. The adhesion of platelets to injured vascular surfaces in the arterial circulation is a critical initiating event in hemostasis. GP-IX may provide for membrane insertion and orientation of GP-Ib.
Involvement in disease	Defects in GP9 are a cause of Bernard-Soulier syndrome (BSS) [MIM:231200]; also known as giant platelet disease (GPD). BSS patients have unusually large platelets and have a clinical bleeding tendency.
Sequence similarities	Contains 1 LRR (leucine-rich) repeat. Contains 1 LRRCT domain. Contains 1 LRRNT domain.
Cellular localization	Membrane.

Images

Surface staining of human platelets with ab194810.



Flow Cytometry - FITC Anti-CD42a/GP-IX antibody
[GR-P], prediluted (ab194810)

Please note: All products are "FOR RESEARCH USE ONLY. NOT FOR USE IN DIAGNOSTIC PROCEDURES"

Our Abpromise to you: Quality guaranteed and expert technical support

- Replacement or refund for products not performing as stated on the datasheet
- Valid for 12 months from date of delivery
- Response to your inquiry within 24 hours
- We provide support in Chinese, English, French, German, Japanese and Spanish
- Extensive multi-media technical resources to help you
- We investigate all quality concerns to ensure our products perform to the highest standards

If the product does not perform as described on this datasheet, we will offer a refund or replacement. For full details of the Abpromise, please visit <https://www.abcam.com/abpromise> or contact our technical team.

Terms and conditions

- Guarantee only valid for products bought direct from Abcam or one of our authorized distributors