

Product datasheet

FITC Anti-CD62L antibody [MEL-14] ab24876

2 References 1 Image

Overview

Product name	FITC Anti-CD62L antibody [MEL-14]
Description	FITC Rat monoclonal [MEL-14] to CD62L
Host species	Rat
Conjugation	FITC. Ex: 493nm, Em: 528nm
Tested applications	Suitable for: Flow Cyt
Species reactivity	Reacts with: Mouse
Immunogen	Tissue/ cell preparation: C3H/eb cloned mouse B lymphoma 38C-13.
Positive control	BLAB/c splenocytes for Immunofluorescent staining.
General notes	

This antibody blocks in vitro binding of lymphocytes to peripheral lymph node HEV and inhibits in vivo lymphocyte extravasation into peripheral lymph nodes and the late stages of leukocyte rolling.

The Life Science industry has been in the grips of a reproducibility crisis for a number of years. Abcam is leading the way in addressing this with our range of recombinant monoclonal antibodies and knockout edited cell lines for gold-standard validation. Please check that this product meets your needs before purchasing.

If you have any questions, special requirements or concerns, please send us an inquiry and/or contact our Support team ahead of purchase. Recommended alternatives for this product can be found below, along with publications, customer reviews and Q&As

Properties

Form	Liquid
Storage instructions	Shipped at 4°C. Store at +4°C.
Storage buffer	pH: 7.20 Preservative: 0.09% Sodium azide Constituents: 0.14% Monobasic dihydrogen sodium phosphate, 0.87% Sodium chloride, 0.1% Gelatin
Purity	Affinity purified
Primary antibody notes	This antibody blocks in vitro binding of lymphocytes to peripheral lymph node HEV and inhibits in vivo lymphocyte extravasation into peripheral lymph nodes and the late stages of leukocyte rolling.

Clonality	Monoclonal
Clone number	MEL-14
Isotype	IgG2a
Light chain type	kappa

Applications

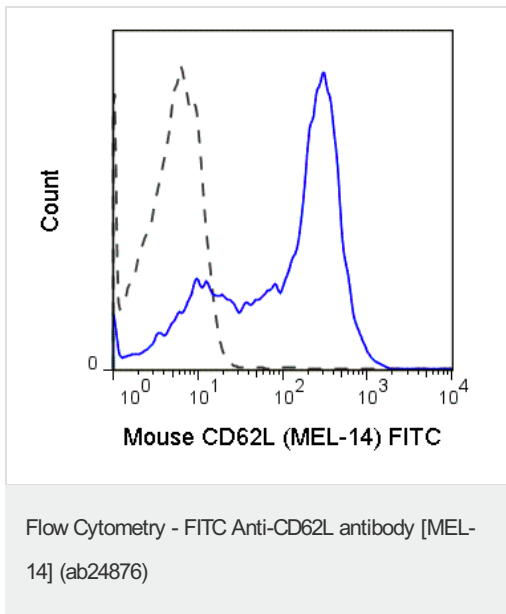
The Abpromise guarantee Our [Abpromise guarantee](#) covers the use of ab24876 in the following tested applications. The application notes include recommended starting dilutions; optimal dilutions/concentrations should be determined by the end user.

Application	Abreviews	Notes
Flow Cyt		Use at an assay dependent concentration. ab18446 - Rat monoclonal IgG2a, is suitable for use as an isotype control with this antibody.

Target

Function	Cell surface adhesion protein. Mediates the adherence of lymphocytes to endothelial cells of high endothelial venules in peripheral lymph nodes. Promotes initial tethering and rolling of leukocytes in endothelia.
Tissue specificity	Expressed in B cell lines and T lymphocytes.
Sequence similarities	Belongs to the selectin/LECAM family. Contains 1 C-type lectin domain. Contains 1 EGF-like domain. Contains 2 Sushi (CCP/SCR) domains.
Cellular localization	Membrane.

Images



Flow cytometry C57Bl/6 splenocytes labeling CD62L with ab24876 at 0.25µg (solid line), or Rat IgG2a isotype control at 0.25µg (dashed line).

Please note: All products are "FOR RESEARCH USE ONLY. NOT FOR USE IN DIAGNOSTIC PROCEDURES"

Our Abpromise to you: Quality guaranteed and expert technical support

- Replacement or refund for products not performing as stated on the datasheet
- Valid for 12 months from date of delivery
- Response to your inquiry within 24 hours
- We provide support in Chinese, English, French, German, Japanese and Spanish
- Extensive multi-media technical resources to help you
- We investigate all quality concerns to ensure our products perform to the highest standards

If the product does not perform as described on this datasheet, we will offer a refund or replacement. For full details of the Abpromise, please visit <https://www.abcam.com/abpromise> or contact our technical team.

Terms and conditions

- Guarantee only valid for products bought direct from Abcam or one of our authorized distributors