

Product datasheet

FITC Anti-CD64 antibody [10.1] ab119828

4 References 1 Image

Overview

<b>Product name</b>	FITC Anti-CD64 antibody [10.1]
<b>Description</b>	FITC Mouse monoclonal [10.1] to CD64
<b>Host species</b>	Mouse
<b>Conjugation</b>	FITC. Ex: 493nm, Em: 528nm
<b>Tested applications</b>	<b>Suitable for:</b> Flow Cyt
<b>Species reactivity</b>	<b>Reacts with:</b> Human, Non human primates
<b>Immunogen</b>	Tissue, cells or virus corresponding to Human CD64. Rheumatoid synovial fluid cells and fibronectin purified human monocytes
<b>Positive control</b>	Human blood cells.
<b>General notes</b>	<p>The reagent is free of unconjugated FITC and adjusted for direct use.</p> <p>The Life Science industry has been in the grips of a reproducibility crisis for a number of years. Abcam is leading the way in addressing this with our range of recombinant monoclonal antibodies and knockout edited cell lines for gold-standard validation. Please check that this product meets your needs before purchasing.</p> <p>If you have any questions, special requirements or concerns, please send us an inquiry and/or contact our Support team ahead of purchase. Recommended alternatives for this product can be found below, along with publications, customer reviews and Q&amp;As</p>

Properties

<b>Form</b>	Liquid
<b>Storage instructions</b>	Shipped at 4°C. Store at +4°C.
<b>Storage buffer</b>	pH: 7.4 Preservative: 0.1% Sodium azide Constituents: 0.2% BSA, 99% PBS
<b>Purity</b>	Size exclusion
<b>Clonality</b>	Monoclonal
<b>Clone number</b>	10.1
<b>Isotype</b>	IgG1

## Applications

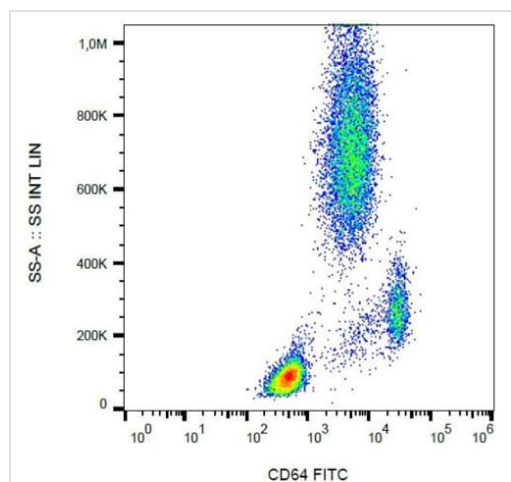
**The Abpromise guarantee** Our [Abpromise guarantee](#) covers the use of ab119828 in the following tested applications. The application notes include recommended starting dilutions; optimal dilutions/concentrations should be determined by the end user.

Application	Abreviews	Notes
Flow Cyt		Use 4µl for 10 <sup>6</sup> cells. <a href="#">ab91356</a> - Mouse monoclonal IgG1, is suitable for use as an isotype control with this antibody.

## Target

<b>Function</b>	High affinity receptor for the Fc region of immunoglobulins gamma. Functions in both innate and adaptive immune responses.
<b>Tissue specificity</b>	Monocyte/macrophage specific.
<b>Sequence similarities</b>	Belongs to the immunoglobulin superfamily. FCGR1 family. Contains 3 Ig-like C2-type (immunoglobulin-like) domains.
<b>Post-translational modifications</b>	Phosphorylated on serine residues.
<b>Cellular localization</b>	Cell membrane. Stabilized at the cell membrane through interaction with FCER1G.

## Images



Flow Cytometry - FITC Anti-CD64 antibody [10.1]  
(ab119828)

Analysis by flow cytometry of ab119828 staining CD64 in human peripheral blood cells.

**Please note:** All products are "FOR RESEARCH USE ONLY. NOT FOR USE IN DIAGNOSTIC PROCEDURES"

## **Our Abpromise to you: Quality guaranteed and expert technical support**

---

- Replacement or refund for products not performing as stated on the datasheet
- Valid for 12 months from date of delivery
- Response to your inquiry within 24 hours
  
- We provide support in Chinese, English, French, German, Japanese and Spanish
- Extensive multi-media technical resources to help you
- We investigate all quality concerns to ensure our products perform to the highest standards

If the product does not perform as described on this datasheet, we will offer a refund or replacement. For full details of the Abpromise, please visit <https://www.abcam.com/abpromise> or contact our technical team.

## **Terms and conditions**

---

- Guarantee only valid for products bought direct from Abcam or one of our authorized distributors