

Product datasheet

FITC Anti-F4/80 antibody [BM8] ab60343

[24 References](#) [2 Images](#)

Overview

Product name	FITC Anti-F4/80 antibody [BM8]
Description	FITC Rat monoclonal [BM8] to F4/80
Host species	Rat
Conjugation	FITC. Ex: 493nm, Em: 528nm
Tested applications	Suitable for: Flow Cyt, ICC/IF
Species reactivity	Reacts with: Mouse
Immunogen	Tissue, cells or virus corresponding to Mouse F4/80. BALB/c macrophages obtained from 14-day-old bone marrow cell cultures.
Positive control	Mouse macrophages and spleen cells.
General notes	<p>This antibody is the only macrophage marker that is able to distinguish non-destructive from destructive inflammation processes in the pancreas. It is a unique histological marker of the progression from peri-insulinitis to beta-cell destruction and diabetes in a mouse diabetes model.</p> <p>The Life Science industry has been in the grips of a reproducibility crisis for a number of years. Abcam is leading the way in addressing this with our range of recombinant monoclonal antibodies and knockout edited cell lines for gold-standard validation. Please check that this product meets your needs before purchasing.</p> <p>If you have any questions, special requirements or concerns, please send us an inquiry and/or contact our Support team ahead of purchase. Recommended alternatives for this product can be found below, along with publications, customer reviews and Q&As</p>

Properties

Form	Liquid
Storage instructions	Shipped at 4°C. Store at 4°C (stable for up to 12 months). Store at +4°C. Store In the Dark.
Storage buffer	<p>pH: 7.20</p> <p>Preservative: 0.09% Sodium azide</p> <p>Constituents: 0.1% Gelatin, 0.14% Monobasic dihydrogen sodium phosphate, 0.87% Sodium chloride</p>
Purity	Affinity purified
Primary antibody notes	This antibody is the only macrophage marker that is able to distinguish non-destructive from destructive inflammation processes in the pancreas. It is a unique histological marker of the

progression from peri-insulinitis to beta-cell destruction and diabetes in a mouse diabetes model.

Clonality	Monoclonal
Clone number	BM8
Isotype	IgG2a

Applications

The Abpromise guarantee Our **Abpromise guarantee** covers the use of ab60343 in the following tested applications.

The application notes include recommended starting dilutions; optimal dilutions/concentrations should be determined by the end user.

Application	Abreviews	Notes
Flow Cyt		1/50 - 1/100. ab18446 - Rat monoclonal IgG2a, is suitable for use as an isotype control with this antibody.
ICC/IF		Use a concentration of 1 µg/ml.

Target

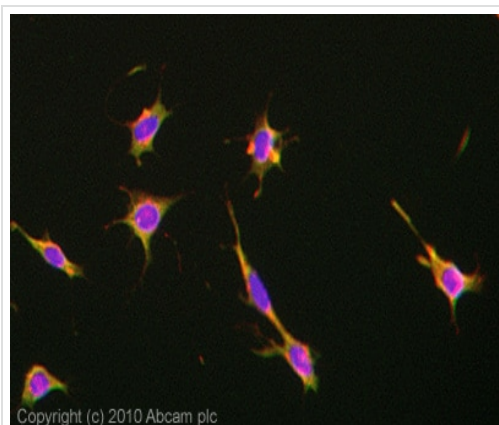
Function Orphan receptor involved in cell adhesion and probably in cell-cell interactions specifically involving cells of the immune system. May play a role in regulatory T-cells (Treg) development.

Tissue specificity Expression is restricted to eosinophils.

Sequence similarities Belongs to the G-protein coupled receptor 2 family. Adhesion G-protein coupled receptor (ADGR) subfamily.
Contains 6 EGF-like domains.
Contains 1 GPS domain.

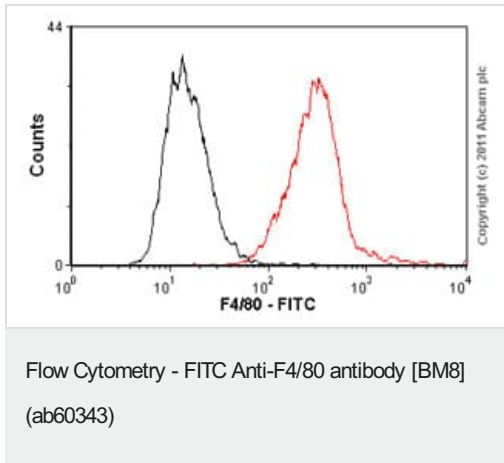
Cellular localization Cell membrane.

Images



ICC/IF image of ab60343 stained MEF cells. The cells were 4% PFA fixed (10 min) and then incubated in 1%BSA / 10% normal goat serum / 0.3M glycine in 0.1% PBS-Tween for 1h to permeabilise the cells and block non-specific protein-protein interactions. The cells were then incubated with the antibody (ab60343, 1µg/ml, FITC conjugated) overnight at +4°C. Alexa Fluor® 594 WGA was used to label plasma membranes (red) at a 1/200 dilution for 1h. DAPI was used to stain the cell nuclei (blue) at a concentration of 1.43µM.

Immunocytochemistry/ Immunofluorescence - FITC
Anti-F4/80 antibody [BM8] (ab60343)



Overlay histogram showing RAW 264.7 cells stained with ab60343 (red line). The cells were fixed with methanol (5 min) and incubated in 1x PBS / 10% normal goat serum / 0.3M glycine to block non-specific protein-protein interactions. The cells were then incubated with the antibody (ab60343, 1/100 dilution) for 30 min at 22°C. Isotype control antibody (black line) was rat IgG2a [aRTK2758] (**ab18450**, 2µg/1x10⁶ cells) with secondary antibody DyLight® 488 goat anti-rat IgG (H+L) (**ab98386**) at 1/500 dilution for 30 min at 22°C. Acquisition of >5,000 events was performed. This antibody gave a minimal signal in RAW 264.7 cells fixed with methanol (5 min) used under the same conditions.

Please note that Abcam do not have data for use of this antibody on non-fixed cells. We welcome any customer feedback.

Please note: All products are "FOR RESEARCH USE ONLY. NOT FOR USE IN DIAGNOSTIC PROCEDURES"

Our Abpromise to you: Quality guaranteed and expert technical support

- Replacement or refund for products not performing as stated on the datasheet
- Valid for 12 months from date of delivery
- Response to your inquiry within 24 hours
- We provide support in Chinese, English, French, German, Japanese and Spanish
- Extensive multi-media technical resources to help you
- We investigate all quality concerns to ensure our products perform to the highest standards

If the product does not perform as described on this datasheet, we will offer a refund or replacement. For full details of the Abpromise, please visit <https://www.abcam.com/abpromise> or contact our technical team.

Terms and conditions

- Guarantee only valid for products bought direct from Abcam or one of our authorized distributors