

Product datasheet

FITC Anti-Iba1 antibody [1022-5] ab15691

★★★★★ [2 Abreviews](#) [7 References](#) [1 Image](#)

Overview

Product name	FITC Anti-Iba1 antibody [1022-5]
Description	FITC Mouse monoclonal [1022-5] to Iba1
Host species	Mouse
Conjugation	FITC. Ex: 493nm, Em: 528nm
Tested applications	Suitable for: Flow Cyt Unsuitable for: IHC
Species reactivity	Reacts with: Human
Immunogen	Recombinant full length protein corresponding to Human Iba1. Database link: P55008
Positive control	Flow Cytometry: THP-1 cells.
General notes	<p>The Life Science industry has been in the grips of a reproducibility crisis for a number of years. Abcam is leading the way in addressing this with our range of recombinant monoclonal antibodies and knockout edited cell lines for gold-standard validation. Please check that this product meets your needs before purchasing.</p> <p>If you have any questions, special requirements or concerns, please send us an inquiry and/or contact our Support team ahead of purchase. Recommended alternatives for this product can be found below, along with publications, customer reviews and Q&As</p>

Properties

Form	Liquid
Storage instructions	Shipped at 4°C. Store at +4°C.
Storage buffer	pH: 7.20 Preservative: 0.1% Sodium azide Constituents: PBS, 1% BSA
Purity	Immunogen affinity purified
Clonality	Monoclonal
Clone number	1022-5
Isotype	IgG2b

Applications

The Abpromise guarantee

Our **Abpromise guarantee** covers the use of ab15691 in the following tested applications.

The application notes include recommended starting dilutions; optimal dilutions/concentrations should be determined by the end user.

Application	Abreviews	Notes
Flow Cyt	★★★★☆ (2)	Use 10µl for 10 ⁶ cells. ab91368 - Mouse monoclonal IgG2b, is suitable for use as an isotype control with this antibody.

Application notes

Is unsuitable for IHC.

Target

Function

Actin-binding protein that enhances membrane ruffling and RAC activation. Enhances the actin-bundling activity of LCP1. Binds calcium. Plays a role in RAC signaling and in phagocytosis. May play a role in macrophage activation and function. Promotes the proliferation of vascular smooth muscle cells and of T-lymphocytes. Enhances lymphocyte migration. Plays a role in vascular inflammation.

Tissue specificity

Detected in T-lymphocytes and peripheral blood mononuclear cells.

Sequence similarities

Contains 2 EF-hand domains.

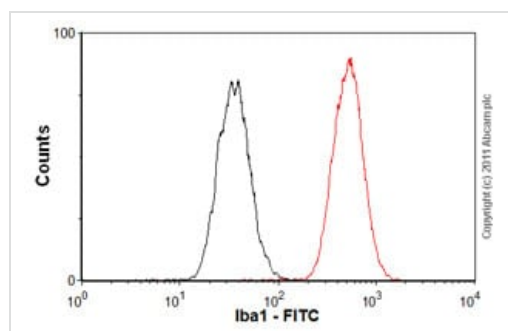
Post-translational modifications

Phosphorylated on serine residues.

Cellular localization

Cytoplasm > cytoskeleton. Cell projection > ruffle membrane. Associated with the actin cytoskeleton at membrane ruffles and at sites of phagocytosis.

Images



Flow Cytometry - FITC Anti-Iba1 antibody [1022-5]
(ab15691)

Overlay histogram showing THP-1 (human monocytic leukemia cell line) cells stained with ab15691 (red line). The cells were fixed with 80% methanol (5 minutes) and then permeabilized with 0.1% PBS-Tween for 20 minutes. The cells were then incubated in 1x PBS / 10% normal goat serum / 0.3M glycine to block non-specific protein-protein interactions. The cells were then incubated with the antibody (ab15691, 10 µl/1 x 10⁶ cells) for 30 minutes at 22°C.

Isotype control antibody (black line) was mouse IgG2b (FITC) (**ab91368**, 10 µl/1 x 10⁶ cells) used under the same conditions.

Acquisition of >5,000 events was performed. This antibody gave a positive signal in THP-1 cells fixed with 4% paraformaldehyde (10 minutes)/permeabilized in 0.1% PBS-Tween used under the same conditions.

Please note: All products are "FOR RESEARCH USE ONLY. NOT FOR USE IN DIAGNOSTIC PROCEDURES"

Our Abpromise to you: Quality guaranteed and expert technical support

- Replacement or refund for products not performing as stated on the datasheet
- Valid for 12 months from date of delivery
- Response to your inquiry within 24 hours

- We provide support in Chinese, English, French, German, Japanese and Spanish
- Extensive multi-media technical resources to help you
- We investigate all quality concerns to ensure our products perform to the highest standards

If the product does not perform as described on this datasheet, we will offer a refund or replacement. For full details of the Abpromise, please visit <https://www.abcam.com/abpromise> or contact our technical team.

Terms and conditions

- Guarantee only valid for products bought direct from Abcam or one of our authorized distributors