

Product datasheet

FITC Anti-ICAM1 antibody [1A29] ab23835

★★★★★ 1 Abreviews 4 References 1 Image

Overview

Product name	FITC Anti-ICAM1 antibody [1A29]
Description	FITC Mouse monoclonal [1A29] to ICAM1
Host species	Mouse
Conjugation	FITC. Ex: 493nm, Em: 528nm
Tested applications	Suitable for: Flow Cyt
Species reactivity	Reacts with: Rat
Immunogen	Tissue, cells or virus corresponding to Rat ICAM1. Rat Ax cell line (HEV derived cells).
General notes	<p>The Life Science industry has been in the grips of a reproducibility crisis for a number of years. Abcam is leading the way in addressing this with our range of recombinant monoclonal antibodies and knockout edited cell lines for gold-standard validation. Please check that this product meets your needs before purchasing.</p> <p>If you have any questions, special requirements or concerns, please send us an inquiry and/or contact our Support team ahead of purchase. Recommended alternatives for this product can be found below, along with publications, customer reviews and Q&As</p>

Properties

Form	Liquid
Storage instructions	Shipped at 4°C. Store at +4°C.
Storage buffer	pH: 7.20 Preservative: 0.09% Sodium azide Constituent: PBS
Purity	Protein A purified
Clonality	Monoclonal
Clone number	1A29
Isotype	IgG1

Applications

The Abpromise guarantee Our [Abpromise guarantee](#) covers the use of ab23835 in the following tested applications.

The application notes include recommended starting dilutions; optimal dilutions/concentrations should be determined by the end user.

Application	Abreviews	Notes
Flow Cyt	★★★★★ (1)	

Application notes

Flow Cyt: 1/25 - 1/100. Use 10µl working dilution for 10⁶ cells in 100µl.

Not tested in other applications.

Optimal dilutions/concentrations should be determined by the end user.

Target

Function

ICAM proteins are ligands for the leukocyte adhesion protein LFA-1 (integrin alpha-L/beta-2). During leukocyte trans-endothelial migration, ICAM1 engagement promotes the assembly of endothelial apical cups through ARHGEF26/SGEF and RHOG activation. In case of rhinovirus infection acts as a cellular receptor for the virus.

Sequence similarities

Belongs to the immunoglobulin superfamily. ICAM family.
Contains 5 Ig-like C2-type (immunoglobulin-like) domains.

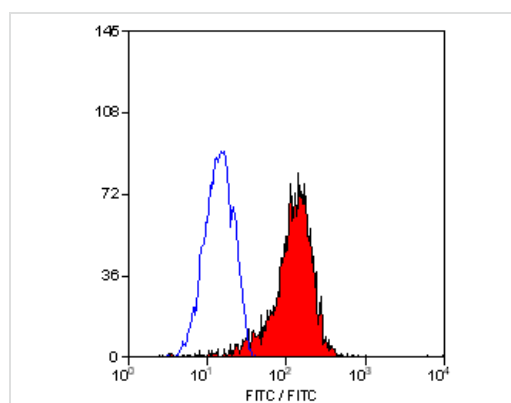
Post-translational modifications

Monoubiquitinated, which is promoted by MARCH9 and leads to endocytosis.

Cellular localization

Membrane.

Images



[ab23875](#) staining ICAM1 in stimulated rat spleen cells by Flow cytometry.

Flow Cytometry - FITC Anti-ICAM1 antibody [1A29]
(ab23835)

Please note: All products are "FOR RESEARCH USE ONLY. NOT FOR USE IN DIAGNOSTIC PROCEDURES"

Our Abpromise to you: Quality guaranteed and expert technical support

- Replacement or refund for products not performing as stated on the datasheet
- Valid for 12 months from date of delivery

- Response to your inquiry within 24 hours
- We provide support in Chinese, English, French, German, Japanese and Spanish
- Extensive multi-media technical resources to help you
- We investigate all quality concerns to ensure our products perform to the highest standards

If the product does not perform as described on this datasheet, we will offer a refund or replacement. For full details of the Abpromise, please visit <https://www.abcam.com/abpromise> or contact our technical team.

Terms and conditions

- Guarantee only valid for products bought direct from Abcam or one of our authorized distributors