

Product datasheet

Anti-FKBP25 antibody ab168772

[3 Images](#)

Overview

Product name	Anti-FKBP25 antibody
Description	Mouse polyclonal to FKBP25
Host species	Mouse
Tested applications	Suitable for: WB, ICC/IF
Species reactivity	Reacts with: Human Predicted to work with: Mouse, Rabbit, Cow
Immunogen	Full length protein, corresponding to amino acids 1-224 of Human FKBP25 (NP_002004.1, UniProt ID: Q00688). Run BLAST with ExPASy Run BLAST with NCBI
Positive control	FKBP25-transfected 293T cell lysate; Human liver tissue lysate; HeLa cells.

Properties

Form	Liquid
Storage instructions	Shipped at 4°C. Store at +4°C short term (1-2 weeks). Upon delivery aliquot. Store at -20°C long term.
Purity	Whole antiserum
Clonality	Polyclonal
Isotype	IgG

Applications

Our [Abpromise guarantee](#) covers the use of **ab168772** in the following tested applications.

The application notes include recommended starting dilutions; optimal dilutions/concentrations should be determined by the end user.

Application	Abreviews	Notes
WB		1/500 - 1/1000. Predicted molecular weight: 25 kDa.
ICC/IF		Use a concentration of 10 µg/ml. For IF applications antibody purification with Protein A will be needed prior to use.

Target

Function

FK506- and rapamycin-binding proteins (FKBPs) constitute a family of receptors for the two immunosuppressants which inhibit T-cell proliferation by arresting two distinct cytoplasmic signal transmission pathways. PPlases accelerate the folding of proteins.

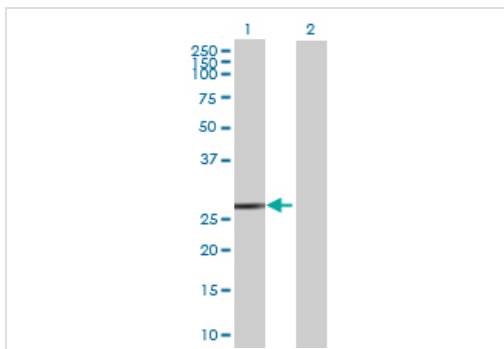
Sequence similarities

Belongs to the FKBP-type PPlase family.
Contains 1 PPlase FKBP-type domain.

Cellular localization

Nucleus.

Images



Western blot - Anti-FKBP25 antibody (ab168772)

All lanes : Anti-FKBP25 antibody (ab168772) at 1/500 dilution

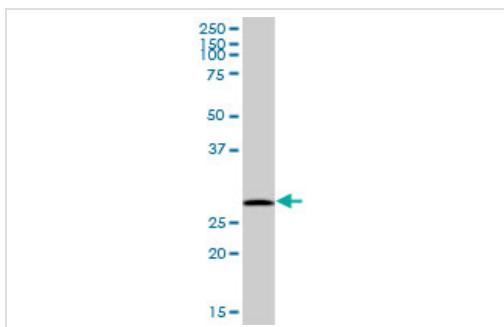
Lane 1 : FKBP25-transfected 293T cell line lysate

Lane 2 : Non-transfected 293T cell lysate

Lysates/proteins at 15 µl per lane.

Developed using the ECL technique.

Predicted band size: 25 kDa

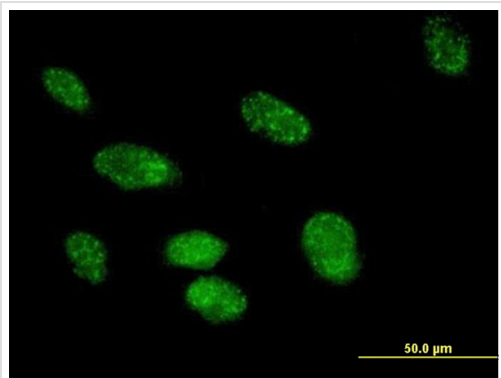


Western blot - Anti-FKBP25 antibody (ab168772)

Anti-FKBP25 antibody (ab168772) at 1/500 dilution + Human liver tissue lysate at 50 µg

Developed using the ECL technique.

Predicted band size: 25 kDa



Immunocytochemistry/ Immunofluorescence - Anti-FKBP25 antibody (ab168772)

Immunofluorescence analysis of paraformaldehyde-fixed HeLa cells, labeling FKBP25 using purified ab168772 at 10 $\mu\text{g/ml}$. Antibody purification with Protein A will be needed prior to use.

Please note: All products are "FOR RESEARCH USE ONLY AND ARE NOT INTENDED FOR DIAGNOSTIC OR THERAPEUTIC USE"

Our Abpromise to you: Quality guaranteed and expert technical support

- Replacement or refund for products not performing as stated on the datasheet
- Valid for 12 months from date of delivery
- Response to your inquiry within 24 hours

- We provide support in Chinese, English, French, German, Japanese and Spanish
- Extensive multi-media technical resources to help you
- We investigate all quality concerns to ensure our products perform to the highest standards

If the product does not perform as described on this datasheet, we will offer a refund or replacement. For full details of the Abpromise, please visit <https://www.abcam.com/abpromise> or contact our technical team.

Terms and conditions

- Guarantee only valid for products bought direct from Abcam or one of our authorized distributors