

Product datasheet

Anti-FLI1 antibody [EPR4645] ab124791

Recombinant RabMAb

1 References 3 Images

Overview

<b>Product name</b>	Anti-FLI1 antibody [EPR4645]
<b>Description</b>	Rabbit monoclonal [EPR4645] to FLI1
<b>Host species</b>	Rabbit
<b>Specificity</b>	This product does not cross-react with ERG.
<b>Tested applications</b>	<b>Suitable for:</b> WB <b>Unsuitable for:</b> Flow Cyt, ICC, IHC-P or IP
<b>Species reactivity</b>	<b>Reacts with:</b> Mouse, Rat, Human, Recombinant fragment
<b>Immunogen</b>	Synthetic peptide within Human FLI1 aa 50-150. The exact sequence is proprietary.
<b>Positive control</b>	Raw264.7, U937, Jurkat, K562 and C6 cell lysates. FLI1 recombinant protein.
<b>General notes</b>	This product is a recombinant monoclonal antibody, which offers several advantages including: <ul style="list-style-type: none"> <li>- High batch-to-batch consistency and reproducibility</li> <li>- Improved sensitivity and specificity</li> <li>- Long-term security of supply</li> <li>- Animal-free production</li> </ul> For more information <a href="#">see here</a> .  Our RabMAb <sup>®</sup> technology is a patented hybridoma-based technology for making rabbit monoclonal antibodies. For details on our patents, please refer to <a href="#">RabMAb<sup>®</sup> patents</a> .

Properties

<b>Form</b>	Liquid
<b>Storage instructions</b>	Shipped at 4°C. Store at -20°C. Stable for 12 months at -20°C.
<b>Storage buffer</b>	pH: 7.20 Preservative: 0.05% Sodium azide Constituents: 0.1% BSA, 40% Glycerol (glycerin, glycerine), 9.85% Tris glycine, 50% Tissue culture supernatant
<b>Purity</b>	Protein A purified
<b>Clonality</b>	Monoclonal
<b>Clone number</b>	EPR4645

Isotype

IgG

## Applications

### The Abpromise guarantee

Our [Abpromise guarantee](#) covers the use of ab124791 in the following tested applications.

The application notes include recommended starting dilutions; optimal dilutions/concentrations should be determined by the end user.

Application	Abreviews	Notes
WB		1/1000 - 1/10000. Predicted molecular weight: 51 kDa.

### Application notes

Is unsuitable for Flow Cyt, ICC, IHC-P or IP.

## Target

### Function

Sequence-specific transcriptional activator. Recognizes the DNA sequence 5'-C[CA]GGAAGT-3'.

### Involvement in disease

Defects in FLI1 are a cause of Ewing sarcoma (ES) [MIM:612219]. A highly malignant, metastatic, primitive small round cell tumor of bone and soft tissue that affects children and adolescents. It belongs to the Ewing sarcoma family of tumors, a group of morphologically heterogeneous neoplasms that share the same cytogenetic features. They are considered neural tumors derived from cells of the neural crest. Ewing sarcoma represents the less differentiated form of the tumors. Note=A chromosomal aberration involving FLI1 is found in patients with Erwing sarcoma. Translocation t(11;22)(q24;q12) with EWSR1.

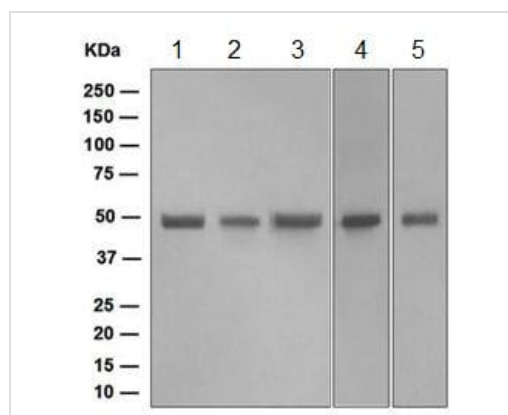
### Sequence similarities

Belongs to the ETS family.  
Contains 1 ETS DNA-binding domain.  
Contains 1 PNT (pointed) domain.

### Cellular localization

Nucleus.

## Images



Western blot - Anti-FLI1 antibody [EPR4645]  
(ab124791)

**All lanes** : Anti-FLI1 antibody [EPR4645] (ab124791) at 1/1000 dilution

**Lane 1** : Raw264.7 cell lysate

**Lane 2** : U937 cell lysate

**Lane 3** : Jurkat cell lysate

**Lane 4** : K562 cell lysate

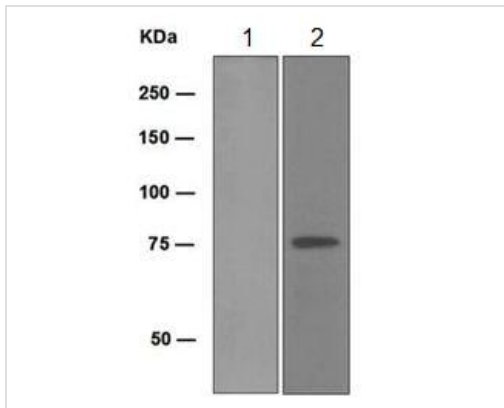
**Lane 5** : C6 cell lysate

Lysates/proteins at 10 µg per lane.

### Secondary

**All lanes** : Goat anti-Rabbit HRP at 1/2000 dilution

**Predicted band size:** 51 kDa



Western blot - Anti-FLI1 antibody [EPR4645] (ab124791)

**All lanes** : Anti-FLI1 antibody [EPR4645] (ab124791) at 1/1000 dilution

**Lane 1** : ERG recombinant protein

**Lane 2** : FLI1 recombinant protein




Lysates/proteins at 0.01 µg per lane.

**Secondary**

**All lanes** : Goat anti-Rabbit HRP at 1/2000 dilution

**Predicted band size:** 51 kDa

Why choose a recombinant antibody?

 <p><b>Research with confidence</b> Consistent and reproducible results</p>	 <p><b>Long-term and scalable supply</b> Recombinant technology</p>
 <p><b>Success from the first experiment</b> Confirmed specificity</p>	 <p><b>Ethical standards compliant</b> Animal-free production</p>

Anti-FLI1 antibody [EPR4645] (ab124791)

**Please note:** All products are "FOR RESEARCH USE ONLY. NOT FOR USE IN DIAGNOSTIC PROCEDURES"

**Our Abpromise to you: Quality guaranteed and expert technical support**

- Replacement or refund for products not performing as stated on the datasheet
- Valid for 12 months from date of delivery
- Response to your inquiry within 24 hours
- We provide support in Chinese, English, French, German, Japanese and Spanish
- Extensive multi-media technical resources to help you
- We investigate all quality concerns to ensure our products perform to the highest standards

If the product does not perform as described on this datasheet, we will offer a refund or replacement. For full details of the Abpromise, please visit <https://www.abcam.com/abpromise> or contact our technical team.

## Terms and conditions

---

- Guarantee only valid for products bought direct from Abcam or one of our authorized distributors