

Product datasheet

Anti-FLP1 antibody - N-terminal ab231288

1 Image

Overview

Product name	Anti-FLP1 antibody - N-terminal
Description	Rabbit polyclonal to FLP1 - N-terminal
Host species	Rabbit
Tested applications	Suitable for: WB
Species reactivity	Reacts with: Saccharomyces cerevisiae
Immunogen	Synthetic peptide corresponding to Saccharomyces cerevisiae FLP1 (N terminal) conjugated to keyhole limpet haemocyanin. (Three peptides).
Positive control	WB: Saccharomyces cerevisiae FLP1 transfected HEK-293 whole cell lysate.
General notes	<p>The Life Science industry has been in the grips of a reproducibility crisis for a number of years. Abcam is leading the way in addressing this with our range of recombinant monoclonal antibodies and knockout edited cell lines for gold-standard validation. Please check that this product meets your needs before purchasing.</p> <p>If you have any questions, special requirements or concerns, please send us an inquiry and/or contact our Support team ahead of purchase. Recommended alternatives for this product can be found below, along with publications, customer reviews and Q&As</p>

Properties

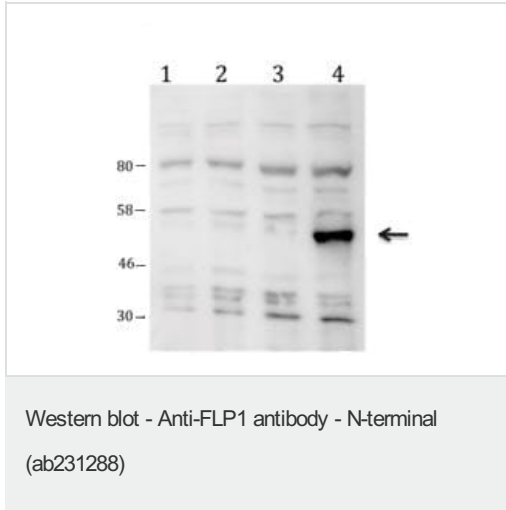
Form	Liquid
Storage instructions	Shipped at 4°C. Store at +4°C short term (1-2 weeks). Upon delivery aliquot. Store at -20°C long term. Avoid freeze / thaw cycle.
Storage buffer	Preservative: 0.05% Sodium azide
Purity	Whole antiserum
Clonality	Polyclonal
Isotype	IgG

Applications

The Abpromise guarantee Our [Abpromise guarantee](#) covers the use of ab231288 in the following tested applications. The application notes include recommended starting dilutions; optimal dilutions/concentrations should be determined by the end user.

Application	Abreviews	Notes
WB		1/500. Predicted molecular weight: 49 kDa.

Images



All lanes : Anti-FLP1 antibody - N-terminal (ab231288) at 1/500 dilution

Lane 1 : Non-transfected HEK-293 (human epithelial cell line from embryonic kidney) whole cell lysate

Lane 2 : Cre transfected HEK-293 whole cell lysate

Lane 3 : Dre transfected HEK-293 whole cell lysate

Lane 4 : Saccharomyces cerevisiae FLP1 transfected HEK-293 whole cell lysate

Predicted band size: 49 kDa

Dilution buffer: BSA/PBS-Tween.

Please note: All products are "FOR RESEARCH USE ONLY. NOT FOR USE IN DIAGNOSTIC PROCEDURES"

Our Abpromise to you: Quality guaranteed and expert technical support

- Replacement or refund for products not performing as stated on the datasheet
- Valid for 12 months from date of delivery
- Response to your inquiry within 24 hours
- We provide support in Chinese, English, French, German, Japanese and Spanish
- Extensive multi-media technical resources to help you
- We investigate all quality concerns to ensure our products perform to the highest standards

If the product does not perform as described on this datasheet, we will offer a refund or replacement. For full details of the Abpromise, please visit <https://www.abcam.com/abpromise> or contact our technical team.

Terms and conditions

- Guarantee only valid for products bought direct from Abcam or one of our authorized distributors