


Product datasheet

Anti-Flt3 / CD135 antibody ab150599

1 References 1 Image

Overview

<b>Product name</b>	Anti-Flt3 / CD135 antibody
<b>Description</b>	Rabbit polyclonal to Flt3 / CD135
<b>Host species</b>	Rabbit
<b>Specificity</b>	BLAST analysis of the peptide immunogen showed no homology with other Human proteins.
<b>Tested applications</b>	<b>Suitable for:</b> IHC-P
<b>Species reactivity</b>	<b>Reacts with:</b> Human <b>Predicted to work with:</b> Mouse, Rabbit, Horse, Hamster, Cow, Dog, Pig, Monkey, Gorilla, Common marmoset, Bat, Elephant 
<b>Immunogen</b>	Synthetic peptide corresponding to Human Flt3/ CD135 (C terminal). A synthetic 18 amino acid peptide corresponding to residues surrounding the C-terminal of Human FLT3/ CD135 (NP_004110.2).
<b>Positive control</b>	Human tonsil tissue.
<b>General notes</b>	<p>The Life Science industry has been in the grips of a reproducibility crisis for a number of years. Abcam is leading the way in addressing this with our range of recombinant monoclonal antibodies and knockout edited cell lines for gold-standard validation. Please check that this product meets your needs before purchasing.</p> <p>If you have any questions, special requirements or concerns, please send us an inquiry and/or contact our Support team ahead of purchase. Recommended alternatives for this product can be found below, along with publications, customer reviews and Q&amp;As</p>

Properties

<b>Form</b>	Liquid
<b>Storage instructions</b>	Shipped at 4°C.
<b>Storage buffer</b>	Preservative: 0.1% Sodium azide Constituent: 99% PBS
<b>Purity</b>	Immunogen affinity purified
<b>Clonality</b>	Polyclonal
<b>Isotype</b>	IgG

## Applications

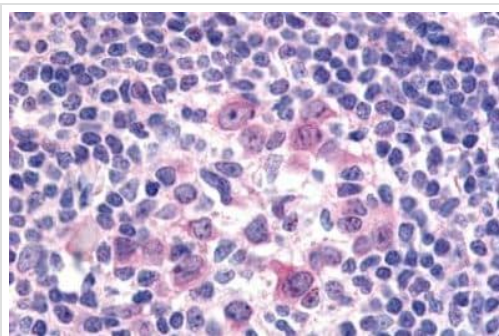
**The Abpromise guarantee** Our [Abpromise guarantee](#) covers the use of ab150599 in the following tested applications. The application notes include recommended starting dilutions; optimal dilutions/concentrations should be determined by the end user.

Application	Abreviews	Notes
IHC-P		Use a concentration of 8 µg/ml. Perform heat mediated antigen retrieval before commencing with IHC staining protocol.

## Target

<b>Function</b>	Receptor for the FL cytokine. Has a tyrosine-protein kinase activity.
<b>Tissue specificity</b>	Bone marrow cells.
<b>Sequence similarities</b>	Belongs to the protein kinase superfamily. Tyr protein kinase family. CSF-1/PDGF receptor subfamily. Contains 1 Ig-like C2-type (immunoglobulin-like) domain. Contains 1 protein kinase domain.
<b>Cellular localization</b>	Membrane.

## Images



Immunohistochemical analysis of formalin-fixed paraffin embedded Human tonsil (following heat-induced antigen retrieval) labelling Flt3/CD135 using ab150599 at 8 µg/ml .

Immunohistochemistry (Formalin/PFA-fixed paraffin-embedded sections) - Anti-Flt3 / CD135 antibody (ab150599)

**Please note:** All products are "FOR RESEARCH USE ONLY. NOT FOR USE IN DIAGNOSTIC PROCEDURES"

## Our Abpromise to you: Quality guaranteed and expert technical support

- Replacement or refund for products not performing as stated on the datasheet
- Valid for 12 months from date of delivery
- Response to your inquiry within 24 hours
- We provide support in Chinese, English, French, German, Japanese and Spanish

- Extensive multi-media technical resources to help you
- We investigate all quality concerns to ensure our products perform to the highest standards

If the product does not perform as described on this datasheet, we will offer a refund or replacement. For full details of the Abpromise, please visit <https://www.abcam.com/abpromise> or contact our technical team.

### **Terms and conditions**

---

- Guarantee only valid for products bought direct from Abcam or one of our authorized distributors