

## Product datasheet

# Anti-FLVCR1 antibody ab251916

[2 Images](#)

### Overview

---

<b>Product name</b>	Anti-FLVCR1 antibody
<b>Description</b>	Rabbit polyclonal to FLVCR1
<b>Host species</b>	Rabbit
<b>Tested applications</b>	<b>Suitable for:</b> ICC/IF, IHC-P
<b>Species reactivity</b>	<b>Reacts with:</b> Human
<b>Immunogen</b>	Recombinant fragment corresponding to Human FLVCR1 aa 512-555. Sequence:  KSDLRRHNINIGITNVDVKAIPADSPTDQEPKTVMLSKQSE SAI  Database link: <a href="#">Q9Y5Y0</a>  <a href="#">Run BLAST with</a> <a href="#">Run BLAST with</a>
<b>Positive control</b>	IHC-P: Human small intestine tissue. ICC/IF: Caco-2 cells.
<b>General notes</b>	This product was previously labelled as FLVCR

Reproducibility is key to advancing scientific discovery and accelerating scientists' next breakthrough.

Abcam is leading the way with our range of recombinant antibodies, knockout-validated antibodies and knockout cell lines, all of which support improved reproducibility.

We are also planning to innovate the way in which we present recommended applications and species on our product datasheets, so that only applications & species that have been tested in our own labs, our suppliers or by selected trusted collaborators are covered by our Abpromise™ guarantee.

In preparation for this, we have started to update the applications & species that this product is Abpromise guaranteed for.

We are also updating the applications & species that this product has been “predicted to work with,” however this information is not covered by our Abpromise guarantee.

Applications & species from publications and Abreviews that have not been tested in our own labs or in those of our suppliers are not covered by the Abpromise guarantee.

Please check that this product meets your needs before purchasing. If you have any questions, special requirements or concerns, please send us an inquiry and/or contact our Support team

ahead of purchase. Recommended alternatives for this product can be found below, as well as customer reviews and Q&As.

## Properties

<b>Form</b>	Liquid
<b>Storage instructions</b>	Shipped at 4°C. Store at +4°C short term (1-2 weeks). Upon delivery aliquot. Store at -20°C long term. Avoid freeze / thaw cycle.
<b>Storage buffer</b>	pH: 7.20 Preservative: 0.02% Sodium azide Constituents: PBS, 40% Glycerol (glycerin, glycerine)
<b>Purity</b>	Immunogen affinity purified
<b>Clonality</b>	Polyclonal
<b>Isotype</b>	IgG

## Applications

Our [Abpromise guarantee](#) covers the use of **ab251916** in the following tested applications.

The application notes include recommended starting dilutions; optimal dilutions/concentrations should be determined by the end user.

Application	Abreviews	Notes
ICC/IF		Use a concentration of 0.25 - 2 µg/ml. Fixation/Permeabilization: PFA/Triton X-100.
IHC-P		1/50 - 1/200. Perform heat mediated antigen retrieval with citrate buffer pH 6 before commencing with IHC staining protocol.

## Target

<b>Function</b>	Heme transporter that exports cytoplasmic heme. It can also export coproporphyrin and protoporphyrin IX, which are both intermediate products in the heme biosynthetic pathway. Does not export bilirubin. Heme export depends on the presence of HPX and may be required to protect developing erythroid cells from heme toxicity. Heme export also provides protection from heme or ferrous iron toxicities in liver and brain. Causes susceptibility to FeLV-C in vitro.
<b>Tissue specificity</b>	Found all hematopoietic tissues including peripheral blood lymphocytes. Some expression is found in pancreas and kidney.
<b>Involvement in disease</b>	Defects in FLVCR1 are the cause of posterior column ataxia with retinitis pigmentosa (PCARP) [MIM:609033]. A neurodegenerative syndrome beginning in infancy with areflexia and retinitis pigmentosa. Nyctalopia (night blindness) and peripheral visual field loss are usually evident during late childhood or teenage years, with subsequent progressive constriction of the visual fields and loss of central retinal function over time. A sensory ataxia caused by degeneration of the posterior columns of the spinal cord results in a loss of proprioceptive sensation that is clinically evident in the second decade of life and gradually progresses. Scoliosis, camptodactyly, achalasia, gastrointestinal dysmotility, and a sensory peripheral neuropathy are variable features of the disease. Affected individuals have no clinical or radiological evidence of cerebral or cerebellar

involvement. Note=Defective neuronal heme transmembrane export due to FLVCR1 mutations may abrogate the neuroprotective effects of neuroglobin and initiate an apoptotic cascade that results in the selective degeneration of photoreceptors in the neurosensory retina and sensory neurons in the posterior spinal cord.

**Sequence similarities**

Belongs to the major facilitator superfamily. Feline leukemia virus subgroup C receptor (TC 2.A.1.28.1) family.

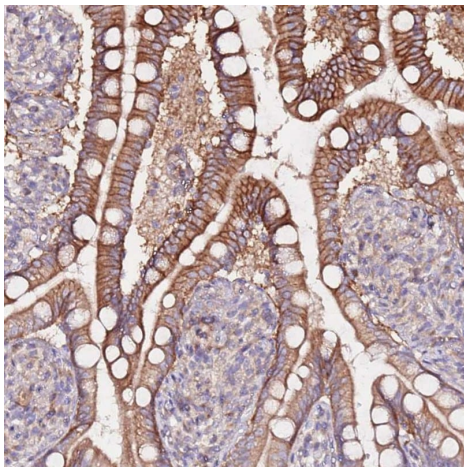
**Developmental stage**

Down-regulated in haemopoietic progenitor cells undergoing differentiation and hemoglobinization. Abundant in fetal liver.

**Cellular localization**

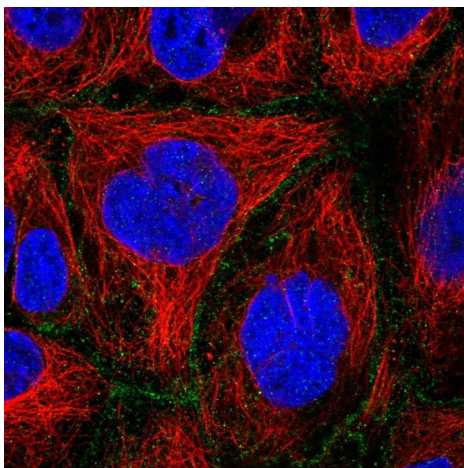
Cell membrane.

**Images**



Paraffin-embedded human small intestine tissue stained for FLVCR1 using ab251916 at 1/50 dilution in immunohistochemical analysis.

Immunohistochemistry (Formalin/PFA-fixed paraffin-embedded sections) - Anti-FLVCR1 antibody (ab251916)



PFA-fixed, Triton X-100 permeabilized Caco-2 cells stained for FLVCR1 (green) using ab251916 at 4 µg/ml in ICC/IF.

Immunocytochemistry/ Immunofluorescence - Anti-FLVCR1 antibody (ab251916)

## **Our Abpromise to you: Quality guaranteed and expert technical support**

---

- Replacement or refund for products not performing as stated on the datasheet
- Valid for 12 months from date of delivery
- Response to your inquiry within 24 hours
  
- We provide support in Chinese, English, French, German, Japanese and Spanish
- Extensive multi-media technical resources to help you
- We investigate all quality concerns to ensure our products perform to the highest standards

If the product does not perform as described on this datasheet, we will offer a refund or replacement. For full details of the Abpromise, please visit <https://www.abcam.com/abpromise> or contact our technical team.

## **Terms and conditions**

---

- Guarantee only valid for products bought direct from Abcam or one of our authorized distributors