

## Product datasheet

# Anti-FMN2 antibody ab72052

[4 References](#)   [2 Images](#)

### Overview

---

<b>Product name</b>	Anti-FMN2 antibody
<b>Description</b>	Rabbit polyclonal to FMN2
<b>Host species</b>	Rabbit
<b>Tested applications</b>	<b>Suitable for:</b> IHC-P, WB
<b>Species reactivity</b>	<b>Reacts with:</b> Human
<b>Immunogen</b>	Synthetic peptide (Human) corresponding to a region between residues 650-700 of human FMN2. (NP_064450.3).
<b>Positive control</b>	human brain lysate.
<b>General notes</b>	<p>Reproducibility is key to advancing scientific discovery and accelerating scientists' next breakthrough.</p> <p>Abcam is leading the way with our range of recombinant antibodies, knockout-validated antibodies and knockout cell lines, all of which support improved reproducibility.</p> <p>We are also planning to innovate the way in which we present recommended applications and species on our product datasheets, so that only applications &amp; species that have been tested in our own labs, our suppliers or by selected trusted collaborators are covered by our Abpromise™ guarantee.</p> <p>In preparation for this, we have started to update the applications &amp; species that this product is Abpromise guaranteed for.</p> <p>We are also updating the applications &amp; species that this product has been “predicted to work with,” however this information is not covered by our Abpromise guarantee.</p> <p>Applications &amp; species from publications and Abreviews that have not been tested in our own labs or in those of our suppliers are not covered by the Abpromise guarantee.</p> <p>Please check that this product meets your needs before purchasing. If you have any questions, special requirements or concerns, please send us an inquiry and/or contact our Support team ahead of purchase. Recommended alternatives for this product can be found below, as well as customer reviews and Q&amp;As.</p>

### Properties

---

<b>Form</b>	Liquid
-------------	--------

<b>Storage instructions</b>	Shipped at 4°C. Upon delivery aliquot and store at -20°C or -80°C. Avoid repeated freeze / thaw cycles.
<b>Storage buffer</b>	pH: 7.4 Preservative: 0.05% Sodium azide Constituents: 0.05% BSA, PBS
<b>Purity</b>	Protein A purified
<b>Clonality</b>	Polyclonal
<b>Isotype</b>	IgG

## Applications

Our [Abpromise guarantee](#) covers the use of **ab72052** in the following tested applications.

The application notes include recommended starting dilutions; optimal dilutions/concentrations should be determined by the end user.

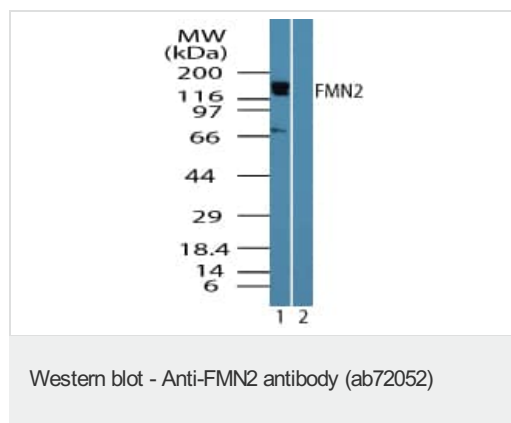
Application	Abreviews	Notes
IHC-P		
WB		

<b>Application notes</b>	WB: Use at a concentration of 0.25 - 0.5 µg/ml. Detects bands of approximately 67 and 150 kDa (predicted molecular weight: 180 kDa).
	Not yet tested in other applications. Optimal dilutions/concentrations should be determined by the end user.

## Target

<b>Function</b>	Required for asymmetric spindle positioning, asymmetric oocyte division and polar body extrusion during female germ cell meiosis (By similarity). Actin-binding protein that is involved in actin cytoskeleton assembly and reorganization. Acts as an actin nucleation factor and promotes assembly of actin filaments together with SPIRE1 and SPIRE2. Involved in intracellular vesicle transport along actin fibers, providing a novel link between actin cytoskeleton dynamics and intracellular transport. Plays a role in responses to DNA damage, cellular stress and hypoxia by protecting CDKN1A against degradation, and thereby plays a role in stress-induced cell cycle arrest. Protects cells against apoptosis by protecting CDKN1A against degradation.
<b>Tissue specificity</b>	Expressed almost exclusively in the developing and mature central nervous system.
<b>Sequence similarities</b>	Belongs to the formin homology family. Cappuccino subfamily. Contains 1 FH1 (formin homology 1) domain. Contains 1 FH2 (formin homology 2) domain.
<b>Cellular localization</b>	Cytoplasm > cytoskeleton. Cytoplasm > perinuclear region. Cytoplasm > cytosol. Cell membrane. Cytoplasmic vesicle membrane. Cytoplasm > cell cortex. Nucleus > nucleolus. Recruited to the membranes via its interaction with SPIRE1. Colocalizes with the actin cytoskeleton. Detected at the cleavage furrow during asymmetric oocyte division and polar body extrusion.

## Images



**All lanes :** Anti-FMN2 antibody (ab72052) at 0.25 µg/ml

**Lane 1 :** human brain lysate

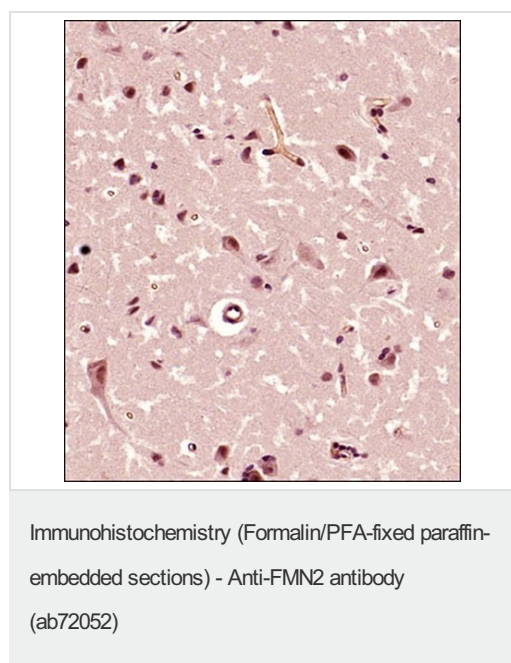
**Lane 2 :** human brain lysate with immunising peptide

**Predicted band size:** 180 kDa

**Observed band size:** 150 kDa

[why is the actual band size different from the predicted?](#)

**Additional bands at:** 67 kDa. We are unsure as to the identity of these extra bands.



Immunohistochemical analysis of formalin fixed and paraffin embedded Human brain tissue section staining FMN2 using ab72052 at 1/300 dilution. HRP- labeled was used as the secondary antibody and hematoxylin was used as a nuclei counterstain.

**Please note:** All products are "FOR RESEARCH USE ONLY. NOT FOR USE IN DIAGNOSTIC PROCEDURES"

### Our Abpromise to you: Quality guaranteed and expert technical support

- Replacement or refund for products not performing as stated on the datasheet
- Valid for 12 months from date of delivery
- Response to your inquiry within 24 hours
- We provide support in Chinese, English, French, German, Japanese and Spanish
- Extensive multi-media technical resources to help you
- We investigate all quality concerns to ensure our products perform to the highest standards

If the product does not perform as described on this datasheet, we will offer a refund or replacement. For full details of the Abpromise, please visit <https://www.abcam.com/abpromise> or contact our technical team.

## Terms and conditions

---

- Guarantee only valid for products bought direct from Abcam or one of our authorized distributors