

## Product datasheet

# Anti-FOG2 antibody ab121212

[1 Abreviews](#) [2 Images](#)

### Overview

---

<b>Product name</b>	Anti-FOG2 antibody
<b>Description</b>	Rabbit polyclonal to FOG2
<b>Host species</b>	Rabbit
<b>Tested applications</b>	<b>Suitable for:</b> ICC/IF, IHC-P
<b>Species reactivity</b>	<b>Reacts with:</b> Human
<b>Immunogen</b>	antigen sequence, corresponding to amino acids 745-874 of Human FOG2.
<b>Positive control</b>	IHC-P: Human placenta tissue. ICC/IF: PC-3 cells
<b>General notes</b>	<p>Reproducibility is key to advancing scientific discovery and accelerating scientists' next breakthrough.</p> <p>Abcam is leading the way with our range of recombinant antibodies, knockout-validated antibodies and knockout cell lines, all of which support improved reproducibility.</p> <p>We are also planning to innovate the way in which we present recommended applications and species on our product datasheets, so that only applications &amp; species that have been tested in our own labs, our suppliers or by selected trusted collaborators are covered by our Abpromise™ guarantee.</p> <p>In preparation for this, we have started to update the applications &amp; species that this product is Abpromise guaranteed for.</p> <p>We are also updating the applications &amp; species that this product has been "predicted to work with," however this information is not covered by our Abpromise guarantee.</p> <p>Applications &amp; species from publications and Abreviews that have not been tested in our own labs or in those of our suppliers are not covered by the Abpromise guarantee.</p> <p>Please check that this product meets your needs before purchasing. If you have any questions, special requirements or concerns, please send us an inquiry and/or contact our Support team ahead of purchase. Recommended alternatives for this product can be found below, as well as customer reviews and Q&amp;As.</p>

### Properties

---

<b>Form</b>	Liquid
<b>Storage instructions</b>	Shipped at 4°C. Upon delivery aliquot and store at -20°C. Avoid freeze / thaw cycles.

<b>Storage buffer</b>	pH: 7.20 Preservative: 0.02% Sodium azide Constituents: 59% PBS, 40% Glycerol (glycerin, glycerine)
<b>Purity</b>	Immunogen affinity purified
<b>Clonality</b>	Polyclonal
<b>Isotype</b>	IgG

## Applications

Our [Abpromise guarantee](#) covers the use of **ab121212** in the following tested applications.

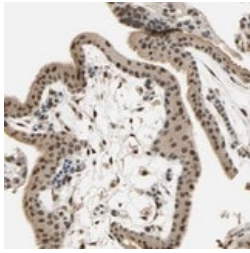
The application notes include recommended starting dilutions; optimal dilutions/concentrations should be determined by the end user.

Application	Abreviews	Notes
ICC/IF		Use a concentration of 0.25 - 2 µg/ml.
IHC-P		1/50 - 1/200. Perform heat mediated antigen retrieval with citrate buffer pH 6 before commencing with IHC staining protocol.

## Target

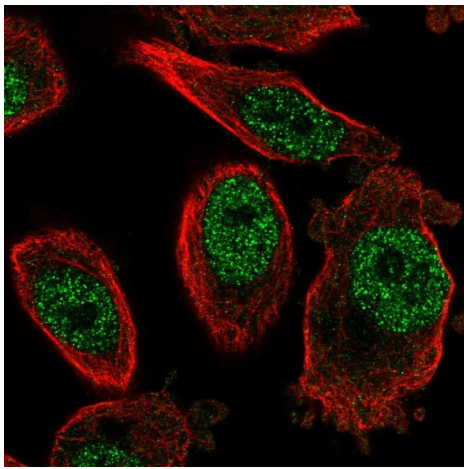
<b>Function</b>	Transcription regulator that plays a central role in heart morphogenesis and development of coronary vessels from epicardium, by regulating genes that are essential during cardiogenesis. Essential cofactor that acts via the formation of a heterodimer with transcription factors of the GATA family GATA4, GATA5 and GATA6. Such heterodimer can both activate or repress transcriptional activity, depending on the cell and promoter context. Also required in gonadal differentiation, possibly be regulating expression of SRY. Probably acts a corepressor of NR2F2.
<b>Tissue specificity</b>	Widely expressed at low level.
<b>Involvement in disease</b>	Defects in ZFPM2 may be a cause of tetralogy of Fallot (TOF) [MIM:187500]. TOF is a congenital heart anomaly which consists of pulmonary stenosis, ventricular septal defect, dextroposition of the aorta (aorta is on the right side instead of the left) and hypertrophy of the right ventricle. This condition results in a blue baby at birth due to inadequate oxygenation. Surgical correction is emergent. Defects in ZFPM2 are the cause of diaphragmatic hernia 3 (DIH3) [MIM:610187]; a form of congenital diaphragmatic hernia (CDH). CDH refers to a group of congenital defects in the structural integrity of the diaphragm associated with often lethal pulmonary hypoplasia and pulmonary hypertension.
<b>Sequence similarities</b>	Belongs to the FOG (Friend of GATA) family. Contains 3 C2H2-type zinc fingers. Contains 5 C2HC-type zinc fingers.
<b>Domain</b>	The CCHC-type zinc fingers 1, 5, 6 and 8 directly bind to GATA-type zinc fingers. The Tyr residue adjacent to the last Cys of the CCHC-type zinc finger is essential for the interaction with GATA-type zinc fingers.
<b>Cellular localization</b>	Nucleus.

## Images



ab121212 at 1/25 dilution staining FOG2 in Paraffin-embedded Human Placenta tissue by Immunohistochemistry.

Immunohistochemistry (Formalin/PFA-fixed paraffin-embedded sections) - Anti-FOG2 antibody (ab121212)



Immunocytochemistry/ Immunofluorescence analysis of PC-3 cells labeling FOG2 with ab121212, showing localization to nucleoplasm. Fixation/Permeabilization: PFA/Triton X-100

Immunocytochemistry/ Immunofluorescence - Anti-FOG2 antibody (ab121212)

**Please note:** All products are "FOR RESEARCH USE ONLY. NOT FOR USE IN DIAGNOSTIC PROCEDURES"

### Our Abpromise to you: Quality guaranteed and expert technical support

- Replacement or refund for products not performing as stated on the datasheet
- Valid for 12 months from date of delivery
- Response to your inquiry within 24 hours
- We provide support in Chinese, English, French, German, Japanese and Spanish
- Extensive multi-media technical resources to help you
- We investigate all quality concerns to ensure our products perform to the highest standards

If the product does not perform as described on this datasheet, we will offer a refund or replacement. For full details of the Abpromise, please visit <https://www.abcam.com/abpromise> or contact our technical team.

### Terms and conditions

- Guarantee only valid for products bought direct from Abcam or one of our authorized distributors

