

Product datasheet

Anti-Folate Binding Protein/FBP antibody ab67422

★★★★★ 2 Abreviews 4 References 4 Images

Overview

Product name	Anti-Folate Binding Protein/FBP antibody
Description	Rabbit polyclonal to Folate Binding Protein/FBP
Host species	Rabbit
Tested applications	Suitable for: ICC/IF, WB, IHC-P
Species reactivity	Reacts with: Mouse, Human Predicted to work with: Rat, Chicken
Immunogen	Synthetic peptide corresponding to Human Folate Binding Protein/FBP aa 50-150 conjugated to keyhole limpet haemocyanin. Database link: P15328 (Peptide available as ab87124)
Positive control	WB: Mouse cerebellum tissue lysate, JAR and HeLa cell lysates. ICC/IF: HepG2 cells.
General notes	Previously labelled as Folate Binding Protein

Properties

Form	Liquid
Storage instructions	Shipped at 4°C. Store at +4°C short term (1-2 weeks). Upon delivery aliquot. Store at -20°C or -80°C. Avoid freeze / thaw cycle.
Storage buffer	pH: 7.40 Preservative: 0.02% Sodium azide Constituent: PBS Batches of this product that have a concentration < 1mg/ml may have BSA added as a stabilising agent. If you would like information about the formulation of a specific lot, please contact our scientific support team who will be happy to help.
Purity	Immunogen affinity purified
Clonality	Polyclonal
Isotype	IgG

Applications

Our [Abpromise guarantee](#) covers the use of **ab67422** in the following tested applications.

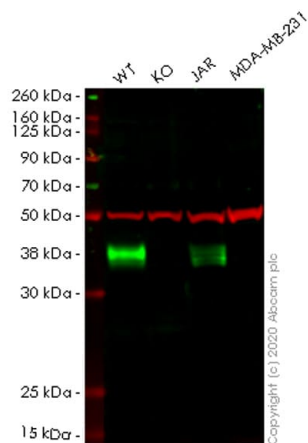
The application notes include recommended starting dilutions; optimal dilutions/concentrations should be determined by the end user.

Application	Abreviews	Notes
ICC/IF		Use a concentration of 5 µg/ml.
WB		Use a concentration of 1 µg/ml. Detects a band of approximately 28 kDa (predicted molecular weight: 30 kDa). Please note, we have been advised by some customers that ab67422 is unable to detect the human version of this protein in western blot. Please contact our scientific support services if you have any queries regarding this antibody.
IHC-P	★★★★☆	Use a concentration of 10 µg/ml. Perform heat mediated antigen retrieval before commencing with IHC staining protocol.

Target

Function	Binds to folate and reduced folic acid derivatives and mediates delivery of 5-methyltetrahydrofolate to the interior of cells.
Tissue specificity	Exclusively expressed in tissues of epithelial origin. Expression is increased in malignant tissues. Expressed in kidney, lung and cerebellum.
Involvement in disease	Defects in FOLR1 are the cause of neurodegeneration due to cerebral folate transport deficiency (NCFTD) [MIM:613068]. NCFTD is an autosomal recessive disorder resulting from brain-specific folate deficiency early in life. Onset is apparent in late infancy with severe developmental regression, movement disturbances, epilepsy, and leukodystrophy. Note=Recognition and diagnosis of this disorder is critical because folinic acid therapy can reverse the clinical symptoms and improve brain abnormalities and function.
Sequence similarities	Belongs to the folate receptor family.
Post-translational modifications	Eight disulfide bonds are present. The secreted form is derived from the membrane-bound form either by cleavage of the GPI anchor, or/and by proteolysis catalyzed by a metalloprotease.
Cellular localization	Cell membrane. Secreted.

Images



Western blot - Anti-Folate Binding Protein/FBP antibody (ab67422)

All lanes : Anti-Folate Binding Protein/FBP antibody (ab67422) at 1/500 dilution

Lane 1 : Wild-type HeLa cell lysate

Lane 2 : FOLR1 knockout HeLa cell lysate

Lane 3 : JAR cell lysate

Lane 4 : MDA-MB-231 cell lysate

Lysates/proteins at 20 µg per lane.

Performed under reducing conditions.

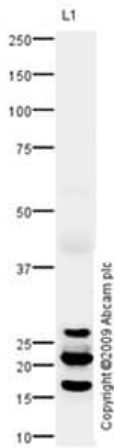
Predicted band size: 30 kDa

Observed band size: 38 kDa

[why is the actual band size different from the predicted?](#)

Lanes 1-4: Merged signal (red and green). Green - ab67422 observed at 38 kDa. Red - loading control, [ab7291](#) observed at 52 kDa.

ab67422 Anti-Folate Binding Protein/FBP antibody was shown to specifically react with Folate Binding Protein/FBP in wild-type HeLa cells. Loss of signal was observed when knockout cell line [ab264921](#) (knockout cell lysate [ab257270](#)) was used. Wild-type and Folate Binding Protein/FBP knockout samples were subjected to SDS-PAGE. ab67422 and Anti-alpha Tubulin antibody [DM1A] - Loading Control ([ab7291](#)) were incubated overnight at 4°C at 1 in 500 dilution and 1 in 20000 dilution respectively. Blots were developed with Goat anti-Rabbit IgG H&L (IRDye® 800CW) preadsorbed ([ab216773](#)) and Goat anti-Mouse IgG H&L (IRDye® 680RD) preadsorbed ([ab216776](#)) secondary antibodies at 1 in 10000 dilution for 1 hour at room temperature before imaging.



Western blot - Anti-Folate Binding Protein/FBP antibody (ab67422)

Anti-Folate Binding Protein/FBP antibody (ab67422) at 1/1 dilution
+ Cerebellum Mouse Tissue Lysate at 10 µg

Secondary

Goat polyclonal to Rabbit IgG - H&L - Pre-Adsorbed (HRP) at
1/3000 dilution

Developed using the ECL technique.

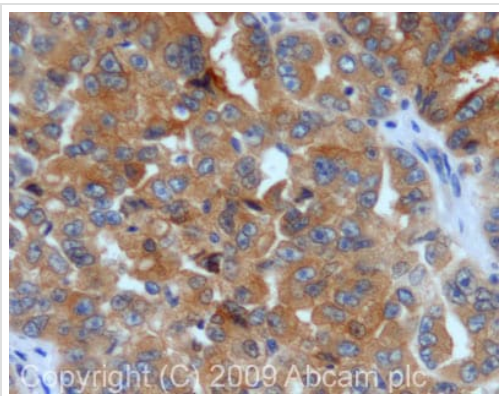
Performed under reducing conditions.

Predicted band size: 30 kDa

Observed band size: 28 kDa [why is the actual band size different from the predicted?](#)

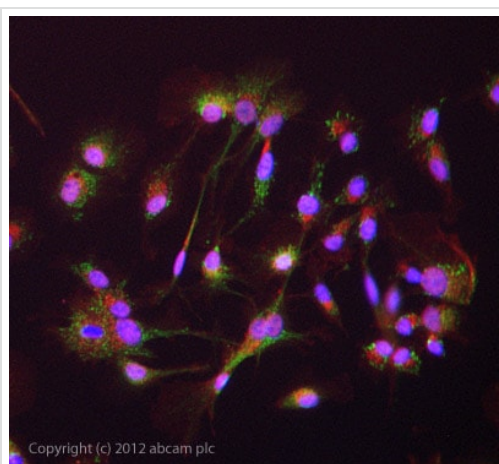
Additional bands at: 16 kDa (possible cleavage fragment), 22 kDa (possible cleavage fragment)

We hypothesize that the 28, 22 and 16 kDa bands represent the propeptide with signal sequence, propeptide without signal sequence and mature protein, respectively.



Immunohistochemistry (Formalin/PFA-fixed paraffin-embedded sections) - Anti-Folate Binding Protein/FBP antibody (ab67422)

IHC image of Folate Binding Protein/FBP staining in human kidney carcinoma formalin fixed paraffin embedded tissue section, performed on a Leica Bond™ system using the standard protocol F. The section was pre-treated using heat mediated antigen retrieval with sodium citrate buffer (pH6, epitope retrieval solution 1) for 20 mins. The section was then incubated with ab67422, 10µg/ml, for 15 mins at room temperature and detected using an HRP conjugated compact polymer system. DAB was used as the chromogen. The section was then counterstained with haematoxylin and mounted with DPX.



Immunocytochemistry/ Immunofluorescence - Anti-Folate Binding Protein/FBP antibody (ab67422)

ab67422 stained HepG2 cells. The cells were 4% formaldehyde fixed (10 min) and then incubated in 1%BSA / 10% normal goat serum / 0.3M glycine in 0.1% PBS-Tween for 1h to permeabilise the cells and block non-specific protein-protein interactions. The cells were then incubated with the antibody ab67422 at 5µg/ml overnight at +4°C. The secondary antibody (green) was DyLight® 488 goat anti- rabbit (ab96899) IgG (H+L) used at a 1/1000 dilution for 1h. Alexa Fluor® 594 WGA was used to label plasma membranes (red) at a 1/200 dilution for 1h. DAPI was used to stain the cell nuclei (blue) at a concentration of 1.43µM.

Please note: All products are "FOR RESEARCH USE ONLY. NOT FOR USE IN DIAGNOSTIC PROCEDURES"

Our Abpromise to you: Quality guaranteed and expert technical support

- Replacement or refund for products not performing as stated on the datasheet
- Valid for 12 months from date of delivery
- Response to your inquiry within 24 hours
- We provide support in Chinese, English, French, German, Japanese and Spanish
- Extensive multi-media technical resources to help you
- We investigate all quality concerns to ensure our products perform to the highest standards

If the product does not perform as described on this datasheet, we will offer a refund or replacement. For full details of the Abpromise, please visit <https://www.abcam.com/abpromise> or contact our technical team.

Terms and conditions

-
- Guarantee only valid for products bought direct from Abcam or one of our authorized distributors