


Product datasheet

Anti-FOLR2 antibody ab228643

2 Images

Overview

<b>Product name</b>	Anti-FOLR2 antibody
<b>Description</b>	Rabbit polyclonal to FOLR2
<b>Host species</b>	Rabbit
<b>Tested applications</b>	<b>Suitable for:</b> WB, IHC-P
<b>Species reactivity</b>	<b>Reacts with:</b> Mouse, Human <b>Predicted to work with:</b> Rhesus monkey 
<b>Immunogen</b>	Recombinant fragment within Human FOLR2 (internal sequence). The exact sequence is proprietary. Database link: <a href="#">P14207</a>
<b>Positive control</b>	WB: Jurkat, Raji and NCI-H929 whole cell extracts. IHC-P: Mouse prostate tissue.

Properties

<b>Form</b>	Liquid
<b>Storage instructions</b>	Shipped at 4°C. Store at +4°C short term (1-2 weeks). Upon delivery aliquot. Store at -20°C long term. Avoid freeze / thaw cycle.
<b>Storage buffer</b>	pH: 7.00 Preservative: 0.01% Thimerosal (merthiolate) Constituents: PBS, 20% Glycerol
<b>Purity</b>	Immunogen affinity purified
<b>Clonality</b>	Polyclonal
<b>Isotype</b>	IgG

Applications

Our [Abpromise guarantee](#) covers the use of **ab228643** in the following tested applications.

The application notes include recommended starting dilutions; optimal dilutions/concentrations should be determined by the end user.

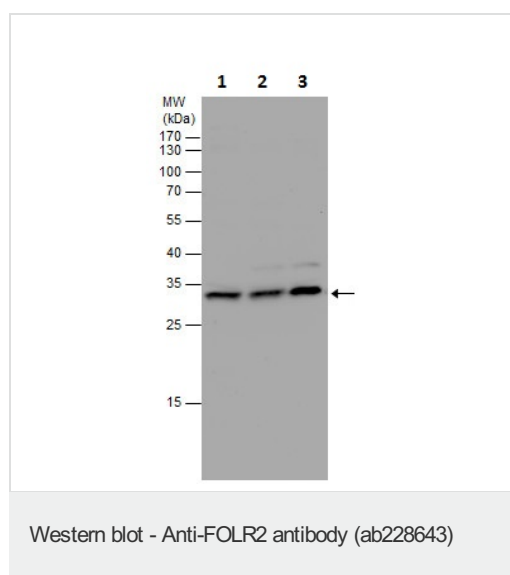
Application	Abreviews	Notes
WB		1/500 - 1/3000. Predicted molecular weight: 29 kDa.

Application	Abreviews	Notes
IHC-P		1/100 - 1/1000.

## Target

<b>Function</b>	Binds to folate and reduced folic acid derivatives and mediates delivery of 5-methyltetrahydrofolate to the interior of cells.
<b>Tissue specificity</b>	Expressed in placenta and hematopoietic cells. Expression is increased in malignant tissues.
<b>Sequence similarities</b>	Belongs to the folate receptor family.
<b>Post-translational modifications</b>	Eight disulfide bonds are present. N-glycosylated.
<b>Cellular localization</b>	Cell membrane. Secreted.

## Images



**All lanes :** Anti-FOLR2 antibody (ab228643) at 1/1000 dilution

**Lane 1 :** Jurkat (human T cell leukemia cell line from peripheral blood) whole cell extract

**Lane 2 :** Raji (human Burkitt's lymphoma cell line) whole cell extract

**Lane 3 :** NCI-H929 whole cell extract

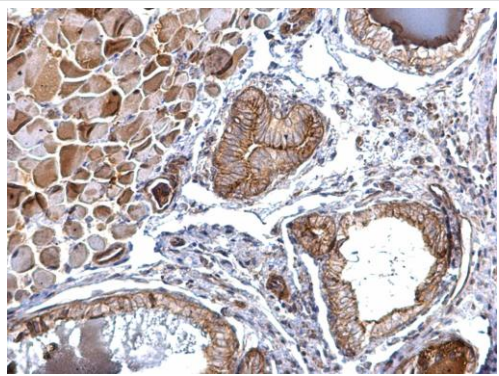
Lysates/proteins at 30 µg per lane.

### Secondary

**All lanes :** HRP-conjugated anti-rabbit IgG

**Predicted band size:** 29 kDa

12% SDS-PAGE gel.



Paraffin-embedded mouse prostate tissue stained for FOLR2 using ab228643 at 1/500 dilution in immunohistochemical analysis.

Immunohistochemistry (Formalin/PFA-fixed paraffin-embedded sections) - Anti-FOLR2 antibody (ab228643)

**Please note:** All products are "FOR RESEARCH USE ONLY. NOT FOR USE IN DIAGNOSTIC PROCEDURES"

### **Our Abpromise to you: Quality guaranteed and expert technical support**

---

- Replacement or refund for products not performing as stated on the datasheet
- Valid for 12 months from date of delivery
- Response to your inquiry within 24 hours
- We provide support in Chinese, English, French, German, Japanese and Spanish
- Extensive multi-media technical resources to help you
- We investigate all quality concerns to ensure our products perform to the highest standards

If the product does not perform as described on this datasheet, we will offer a refund or replacement. For full details of the Abpromise, please visit <https://www.abcam.com/abpromise> or contact our technical team.

### **Terms and conditions**

---

- Guarantee only valid for products bought direct from Abcam or one of our authorized distributors