


Product datasheet

Anti-FOXP1 antibody ab16645

★★★★☆ 20 Abreviews 85 References 2 Images

Overview

Product name	Anti-FOXP1 antibody
Description	Rabbit polyclonal to FOXP1
Host species	Rabbit
Tested applications	Suitable for: IHC-FoFr, WB
Species reactivity	Reacts with: Mouse Predicted to work with: Rat, Chicken, Dog, Human, Xenopus laevis 
Immunogen	Synthetic peptide. This information is proprietary to Abcam and/or its suppliers.
General notes	<p>The Life Science industry has been in the grips of a reproducibility crisis for a number of years. Abcam is leading the way in addressing this with our range of recombinant monoclonal antibodies and knockout edited cell lines for gold-standard validation. Please check that this product meets your needs before purchasing.</p> <p>If you have any questions, special requirements or concerns, please send us an inquiry and/or contact our Support team ahead of purchase. Recommended alternatives for this product can be found below, along with publications, customer reviews and Q&As</p>

Properties

Form	Liquid
Storage instructions	Shipped at 4°C. Store at +4°C short term (1-2 weeks). Upon delivery aliquot. Store at -20°C or -80°C. Avoid freeze / thaw cycle.
Storage buffer	pH: 7.40 Preservative: 0.02% Sodium azide Constituent: PBS Batches of this product that have a concentration < 1mg/ml may have BSA added as a stabilising agent. If you would like information about the formulation of a specific lot, please contact our scientific support team who will be happy to help.
Purity	Immunogen affinity purified
Clonality	Polyclonal
Isotype	IgG

Applications

The Abpromise guarantee

Our [Abpromise guarantee](#) covers the use of ab16645 in the following tested applications.

The application notes include recommended starting dilutions; optimal dilutions/concentrations should be determined by the end user.

Application	Abreviews	Notes
IHC-FoFr		Use at an assay dependent concentration.
WB	★★★★☆ (7)	1/5000. Detects a band of approximately 75 kDa (predicted molecular weight: 75 kDa). ab16645 recognises the different isoforms of FOXP1 in Jurkat cell lysate (see review for further details).

Target

Function

Transcriptional repressor. It plays an important role in the specification and differentiation of lung epithelium. Can act with CTBP1 to synergistically repress transcription but CTPBP1 is not essential. Essential transcriptional regulator of B cell development.

Involvement in disease

Note=A chromosomal aberration involving FOXP1 is found in acute lymphoblastic leukemia. Translocation t(9;3)(p13;p14.1) with PAX5.
Defects in FOXP1 are the cause of mental retardation with language impairment and autistic features (MRLIAF) [MIM:613670]. It is a developmental disorder characterized by mild to moderate mental retardation, language impairment, and autistic features. Patients show global delay, delayed walking, severely delayed speech development, and behavioral abnormalities, including irritability, hyperactivity, aggression, and stereotypical rigid behaviors.

Sequence similarities

Contains 1 C2H2-type zinc finger.
Contains 1 fork-head DNA-binding domain.

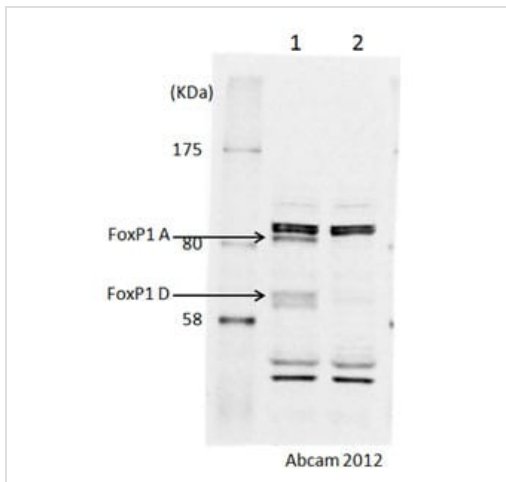
Domain

The leucine-zipper is required for dimerization and transcriptional repression.

Cellular localization

Nucleus.

Images



Western blot - Anti-FOXP1 antibody (ab16645)

All lanes : Anti-FOXP1 antibody (ab16645) at 1/5000 dilution

Lane 1 : Lysate from e12.5 whole mouse embryo FoxP1 +/-

Lane 2 : Lysate from e12.5 whole mouse embryo FoxP1 -/-

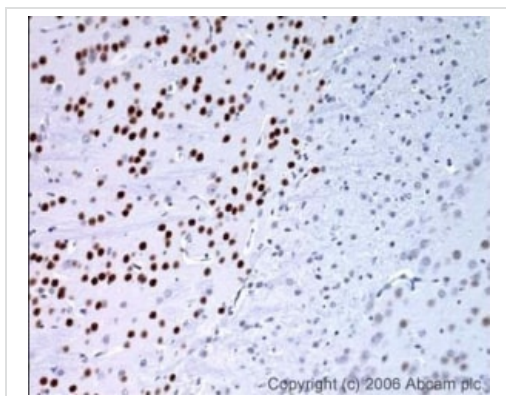
Lysates/proteins at 30 µg per lane.

Developed using the ECL technique.

Predicted band size: 75 kDa

Observed band size: 65,82 kDa

Additional bands at: 45 kDa (possible cross reactivity), 50 kDa (possible cross reactivity), 85 kDa (possible cross reactivity)



Immunohistochemistry (PFA perfusion fixed frozen sections) - Anti-FOXP1 antibody (ab16645)

This image is courtesy of Shunyou Wang, Ph.D.

ab16645 was tested in IHC of formalin fixed sections from mouse (over two weeks of age) brain. Antigen retrieval was in citrate buffer and blocking was in 1% BSA. The primary antibody was incubated at a dilution of 1/200 overnight at 4 degrees celsius. The secondary antibody was a biotin conjugated anti-rabbit IgG.

Please note: All products are "FOR RESEARCH USE ONLY. NOT FOR USE IN DIAGNOSTIC PROCEDURES"

Our Abpromise to you: Quality guaranteed and expert technical support

- Replacement or refund for products not performing as stated on the datasheet
- Valid for 12 months from date of delivery
- Response to your inquiry within 24 hours
- We provide support in Chinese, English, French, German, Japanese and Spanish
- Extensive multi-media technical resources to help you
- We investigate all quality concerns to ensure our products perform to the highest standards

If the product does not perform as described on this datasheet, we will offer a refund or replacement. For full details of the Abpromise, please visit <https://www.abcam.com/abpromise> or contact our technical team.

Terms and conditions

- Guarantee only valid for products bought direct from Abcam or one of our authorized distributors