


Product datasheet

Anti-FREM1 antibody ab117566

1 Image

Overview

---

<b>Product name</b>	Anti-FREM1 antibody
<b>Description</b>	Rabbit polyclonal to FREM1
<b>Host species</b>	Rabbit
<b>Tested applications</b>	<b>Suitable for:</b> IHC-P
<b>Species reactivity</b>	<b>Reacts with:</b> Human <b>Predicted to work with:</b> Mouse 
<b>Immunogen</b>	Synthetic peptide conjugated to KLH, from the C terminus of Human FREM1.
<b>Positive control</b>	Human tonsil tissue.
<b>General notes</b>	<p>Reproducibility is key to advancing scientific discovery and accelerating scientists' next breakthrough.</p> <p>Abcam is leading the way with our range of recombinant antibodies, knockout-validated antibodies and knockout cell lines, all of which support improved reproducibility.</p> <p>We are also planning to innovate the way in which we present recommended applications and species on our product datasheets, so that only applications &amp; species that have been tested in our own labs, our suppliers or by selected trusted collaborators are covered by our Abpromise™ guarantee.</p> <p>In preparation for this, we have started to update the applications &amp; species that this product is Abpromise guaranteed for.</p> <p>We are also updating the applications &amp; species that this product has been “predicted to work with,” however this information is not covered by our Abpromise guarantee.</p> <p>Applications &amp; species from publications and Abreviews that have not been tested in our own labs or in those of our suppliers are not covered by the Abpromise guarantee.</p> <p>Please check that this product meets your needs before purchasing. If you have any questions, special requirements or concerns, please send us an inquiry and/or contact our Support team ahead of purchase. Recommended alternatives for this product can be found below, as well as customer reviews and Q&amp;As.</p>

Properties

---

<b>Form</b>	Liquid
-------------	--------

<b>Storage instructions</b>	Shipped at 4°C. Store at 4°C (stable for up to 12 months). Store at -20°C or -80°C. Avoid freeze / thaw cycle.
<b>Storage buffer</b>	Preservative: 0.02% Sodium azide Constituent: 99% PBS
<b>Purity</b>	Protein A purified
<b>Clonality</b>	Polyclonal
<b>Isotype</b>	IgG

## Applications

Our [Abpromise guarantee](#) covers the use of **ab117566** in the following tested applications.

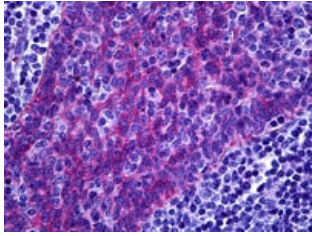
The application notes include recommended starting dilutions; optimal dilutions/concentrations should be determined by the end user.

Application	Abreviews	Notes
IHC-P		Use a concentration of 10 µg/ml.

## Target

<b>Function</b>	Extracellular matrix protein that plays a role in epidermal differentiation and is required for epidermal adhesion during embryonic development.
<b>Involvement in disease</b>	Defects in FREM1 are the cause of bifid nose with or without anorectal and renal anomalies (BNAR) [MIM:608980]. A bifid nose is a rare congenital deformity due to failure of the paired nasal processes to fuse to a single midline organ during early gestation. BNAR is an autosomal recessive disorder and patients usually present a bifid nose associated with renal and anorectal malformations.
<b>Sequence similarities</b>	Belongs to the FRAS1 family. Contains 1 C-type lectin domain. Contains 1 Calx-beta domain. Contains 12 CSPG (NG2) repeats.
<b>Domain</b>	The Calx-beta domain binds calcium with high affinity and undergo a major conformational shift upon binding.
<b>Cellular localization</b>	Secreted > extracellular space > extracellular matrix > basement membrane. Localizes at the basement membrane zone of embryonic epidermis and hair follicles.

## Images



ab117566, at 10 µg/ml, staining FREM1 in formalin fixed, paraffin embedded Human tonsil tissue by Immunohistochemistry.

Immunohistochemistry (Formalin/PFA-fixed paraffin-embedded sections) - Anti-FREM1 antibody (ab117566)

**Please note:** All products are "FOR RESEARCH USE ONLY. NOT FOR USE IN DIAGNOSTIC PROCEDURES"

### **Our Abpromise to you: Quality guaranteed and expert technical support**

---

- Replacement or refund for products not performing as stated on the datasheet
- Valid for 12 months from date of delivery
- Response to your inquiry within 24 hours
  
- We provide support in Chinese, English, French, German, Japanese and Spanish
- Extensive multi-media technical resources to help you
- We investigate all quality concerns to ensure our products perform to the highest standards

If the product does not perform as described on this datasheet, we will offer a refund or replacement. For full details of the Abpromise, please visit <https://www.abcam.com/abpromise> or contact our technical team.

### **Terms and conditions**

---

- Guarantee only valid for products bought direct from Abcam or one of our authorized distributors