


Product datasheet

Anti-Frizzled 2/FZD2 antibody - Extracellular domain
ab219101

2 Images

Overview

Product name	Anti-Frizzled 2/FZD2 antibody - Extracellular domain
Description	Rabbit polyclonal to Frizzled 2/FZD2 - Extracellular domain
Host species	Rabbit
Specificity	BLAST analysis of the peptide immunogen showed no homology with other human proteins, except FZD7 (67%), OR1A2 (56%), NFATC2 (50%).
Tested applications	Suitable for: IHC-P
Species reactivity	Reacts with: Human Predicted to work with: Mouse, Rat, Sheep, Rabbit, Horse, Hamster, Cow, Dog, Pig 
Immunogen	Synthetic peptide within Human Frizzled 2/FZD2 (extracellular). The exact sequence is proprietary. Synthetic 18 amino acid peptide from 3rd extracellular domain of human Frizzled 2/FZD2. Database link: Q14332
Positive control	IHC-P: Human kidney and tonsil tissues.
General notes	This product was previously labelled as Frizzled 2

Properties

Form	Liquid
Storage instructions	Shipped at 4°C. Store at +4°C short term (1-2 weeks). Upon delivery aliquot. Store at -20°C long term. Avoid freeze / thaw cycle.
Storage buffer	Preservative: 0.09% Sodium azide Constituent: 99% PBS
Purity	Immunogen affinity purified
Clonality	Polyclonal
Isotype	IgG

Applications

Our [Abpromise guarantee](#) covers the use of **ab219101** in the following tested applications.

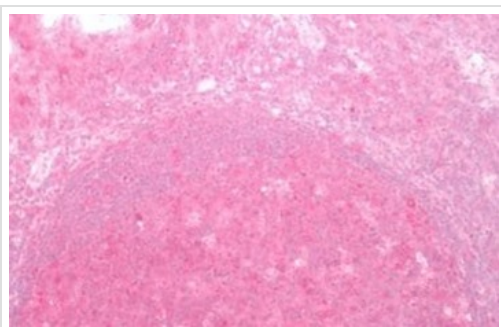
The application notes include recommended starting dilutions; optimal dilutions/concentrations should be determined by the end user.

Application	Abreviews	Notes
IHC-P		Use a concentration of 5 - 10 µg/ml.

Target

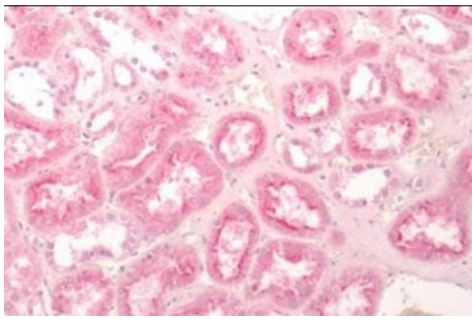
Function	Receptor for Wnt proteins. Most of frizzled receptors are coupled to the beta-catenin canonical signaling pathway, which leads to the activation of disheveled proteins, inhibition of GSK-3 kinase, nuclear accumulation of beta-catenin and activation of Wnt target genes. A second signaling pathway involving PKC and calcium fluxes has been seen for some family members, but it is not yet clear if it represents a distinct pathway or if it can be integrated in the canonical pathway, as PKC seems to be required for Wnt-mediated inactivation of GSK-3 kinase. Both pathways seem to involve interactions with G-proteins. May be involved in transduction and intercellular transmission of polarity information during tissue morphogenesis and/or in differentiated tissues.
Tissue specificity	Widely expressed. In the adult, mainly found in heart, placenta, skeletal muscle, lung, kidney, pancreas, prostate, testis, ovary and colon. In the fetus, expressed in brain, lung and kidney. Low levels in fetal liver.
Sequence similarities	Belongs to the G-protein coupled receptor Fz/Smo family. Contains 1 FZ (frizzled) domain.
Domain	Lys-Thr-X-X-Trp motif is involved in the activation of the Wnt/beta-catenin signaling pathway. The FZ domain is involved in binding with Wnt ligands.
Cellular localization	Membrane.

Images



Immunohistochemical analysis of paraffin embedded formalin fixed human tonsil tissue labeling Frizzled 2/FZD2 using ab219101 at 10 µg/mL.

Immunohistochemistry (Formalin/PFA-fixed paraffin-embedded sections) - Anti-Frizzled 2/FZD2 antibody
- Extracellular domain (ab219101)



Immunohistochemical analysis of paraffin embedded formalin fixed human kidney tissue labeling Frizzled 2/FZD2 using ab219101 at 10 µg/mL.

Immunohistochemistry (Formalin/PFA-fixed paraffin-embedded sections) - Anti-Frizzled 2/FZD2 antibody
- Extracellular domain (ab219101)

Please note: All products are "FOR RESEARCH USE ONLY. NOT FOR USE IN DIAGNOSTIC PROCEDURES"

Our Abpromise to you: Quality guaranteed and expert technical support

- Replacement or refund for products not performing as stated on the datasheet
- Valid for 12 months from date of delivery
- Response to your inquiry within 24 hours
- We provide support in Chinese, English, French, German, Japanese and Spanish
- Extensive multi-media technical resources to help you
- We investigate all quality concerns to ensure our products perform to the highest standards

If the product does not perform as described on this datasheet, we will offer a refund or replacement. For full details of the Abpromise, please visit <https://www.abcam.com/abpromise> or contact our technical team.

Terms and conditions

- Guarantee only valid for products bought direct from Abcam or one of our authorized distributors