

Product datasheet

Anti-Frizzled homolog 1 antibody ab126262

1 Image

Overview

---

|                            |   |
|----------------------------|---|
| <b>Product name</b>        | Anti-Frizzled homolog 1 antibody  |
| <b>Description</b>         | Rabbit polyclonal to Frizzled homolog 1   |
| <b>Host species</b>        | Rabbit  |
| <b>Tested applications</b> | <b>Suitable for:</b> WB   |
| <b>Species reactivity</b>  | <b>Reacts with:</b> Human<br><b>Predicted to work with:</b> Mouse, Rat, Chicken, Cow ▲  |
| <b>Immunogen</b>           | Recombinant fragment, corresponding to a region within amino acids 113-372 of Human Frizzled homolog 1 (Q9UP38).  |
| <b>Positive control</b>    | Raji whole cell lysate.   |
| <b>General notes</b>       | <p>Reproducibility is key to advancing scientific discovery and accelerating scientists' next breakthrough.</p> <p>Abcam is leading the way with our range of recombinant antibodies, knockout-validated antibodies and knockout cell lines, all of which support improved reproducibility.</p> <p>We are also planning to innovate the way in which we present recommended applications and species on our product datasheets, so that only applications &amp; species that have been tested in our own labs, our suppliers or by selected trusted collaborators are covered by our Abpromise™ guarantee.</p> <p>In preparation for this, we have started to update the applications &amp; species that this product is Abpromise guaranteed for.</p> <p>We are also updating the applications &amp; species that this product has been “predicted to work with,” however this information is not covered by our Abpromise guarantee.</p> <p>Applications &amp; species from publications and Abreviews that have not been tested in our own labs or in those of our suppliers are not covered by the Abpromise guarantee.</p> <p>Please check that this product meets your needs before purchasing. If you have any questions, special requirements or concerns, please send us an inquiry and/or contact our Support team ahead of purchase. Recommended alternatives for this product can be found below, as well as customer reviews and Q&amp;As.</p> |

Properties

---

|                             |  |
|-----------------------------|--|
| <b>Form</b>                 | Liquid   |
| <b>Storage instructions</b> | Shipped at 4°C. Upon delivery aliquot and store at -20°C or -80°C. Avoid repeated freeze / thaw cycles.                          |
| <b>Storage buffer</b>       | pH: 7.00<br>Preservative: 0.01% Thimerosal (merthiolate)<br>Constituents: 78.99% PBS, 1% BSA, 20% Glycerol (glycerin, glycerine) |
| <b>Purity</b>               | Immunogen affinity purified  |
| <b>Purification notes</b>   | ab126262 is purified by antigen-affinity chromatography.   |
| <b>Clonality</b>            | Polyclonal   |
| <b>Isotype</b>              | IgG  |

## Applications

Our [Abpromise guarantee](#) covers the use of **ab126262** in the following tested applications.

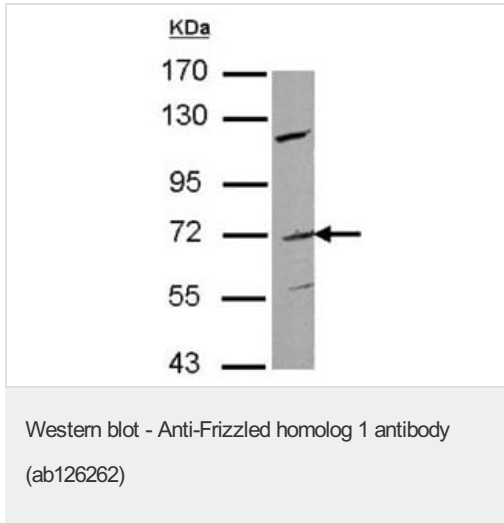
The application notes include recommended starting dilutions; optimal dilutions/concentrations should be determined by the end user.

| Application | Abreviews | Notes   |
|-------------|-----------|---|
| WB          |           | 1/500 - 1/3000. Predicted molecular weight: 71 kDa. |

## Target

|                              |  |
|------------------------------|--|
| <b>Function</b>              | Receptor for Wnt proteins. Most of frizzled receptors are coupled to the beta-catenin canonical signaling pathway, which leads to the activation of disheveled proteins, inhibition of GSK-3 kinase, nuclear accumulation of beta-catenin and activation of Wnt target genes. A second signaling pathway involving PKC and calcium fluxes has been seen for some family members, but it is not yet clear if it represents a distinct pathway or if it can be integrated in the canonical pathway, as PKC seems to be required for Wnt-mediated inactivation of GSK-3 kinase. Both pathways seem to involve interactions with G-proteins. May be involved in transduction and intercellular transmission of polarity information during tissue morphogenesis and/or in differentiated tissues. Activated by Wnt3A, Wnt3, Wnt1 and to a lesser extent Wnt2, but not by Wnt4, Wnt5A, Wnt5B, Wnt6, Wnt7A or Wnt7B. |
| <b>Tissue specificity</b>    | Expressed in adult heart, placenta, lung, kidney, pancreas, prostate, and ovary and in fetal lung and kidney.  |
| <b>Sequence similarities</b> | Belongs to the G-protein coupled receptor Fz/Smo family.<br>Contains 1 FZ (frizzled) domain.   |
| <b>Domain</b>                | Lys-Thr-X-X-X-Trp motif interacts with the PDZ domain of Dvl (Disheveled) family members and is involved in the activation of the Wnt/beta-catenin signaling pathway.<br>The FZ domain is involved in binding with Wnt ligands.  |
| <b>Cellular localization</b> | Membrane. Cell membrane.   |

## Images



Anti-Frizzled homolog 1 antibody (ab126262) at 1/500 dilution +  
Raji whole cell lysate at 30 µg

**Predicted band size:** 71 kDa

7.5% SDS-PAGE

**Please note:** All products are "FOR RESEARCH USE ONLY. NOT FOR USE IN DIAGNOSTIC PROCEDURES"

### Our Abpromise to you: Quality guaranteed and expert technical support

---

- Replacement or refund for products not performing as stated on the datasheet
- Valid for 12 months from date of delivery
- Response to your inquiry within 24 hours
- We provide support in Chinese, English, French, German, Japanese and Spanish
- Extensive multi-media technical resources to help you
- We investigate all quality concerns to ensure our products perform to the highest standards

If the product does not perform as described on this datasheet, we will offer a refund or replacement. For full details of the Abpromise, please visit <https://www.abcam.com/abpromise> or contact our technical team.

### Terms and conditions

---

- Guarantee only valid for products bought direct from Abcam or one of our authorized distributors