




Product datasheet

Anti-FSH beta antibody ab231672

2 Images

Overview

Product name	Anti-FSH beta antibody
Description	Rabbit polyclonal to FSH beta
Host species	Rabbit
Tested applications	Suitable for: WB
Species reactivity	Reacts with: Mouse Predicted to work with: Sheep, Rabbit, Goat, Horse, Guinea pig, Cow, Human, Pig, Chimpanzee, Cynomolgus monkey, Gorilla 
Immunogen	Recombinant full length protein (His-tag) corresponding to Pig FSH beta aa 21-129. (N-terminal His-tag and GST tag; Expressed in E.coli). Sequence: CELTNITITVEKEECNFCISINTTWCAGYCYTRDLVYKDP ARPNIQKTCT FKELVYETVKVPGCAHHADSLYTPVATECHCGKCDS DSTDCTVRGLGPS YCSFSEMKE Database link: P01228 <div style="display: flex; justify-content: space-around;">  Run BLAST with  Run BLAST with </div>
Positive control	WB: Recombinant pig FSH beta protein; Mouse cerebellum lysate.

Properties

Form	Liquid
Storage instructions	Shipped at 4°C. Store at +4°C short term (1-2 weeks). Upon delivery aliquot. Store at -20°C long term. Avoid freeze / thaw cycle.
Storage buffer	pH: 7.40 Preservative: 0.02% Sodium azide Constituents: PBS, 50% Glycerol
Purity	Immunogen affinity purified
Purification notes	ab231672 was purified by antigen-specific affinity chromatography followed by Protein A affinity chromatography.
Clonality	Polyclonal

Isotype

IgG

Applications

Our [Abpromise guarantee](#) covers the use of **ab231672** in the following tested applications.

The application notes include recommended starting dilutions; optimal dilutions/concentrations should be determined by the end user.

Application	Abreviews	Notes
WB		Use a concentration of 0.5 - 2 µg/ml. Predicted molecular weight: 15 kDa.

Target

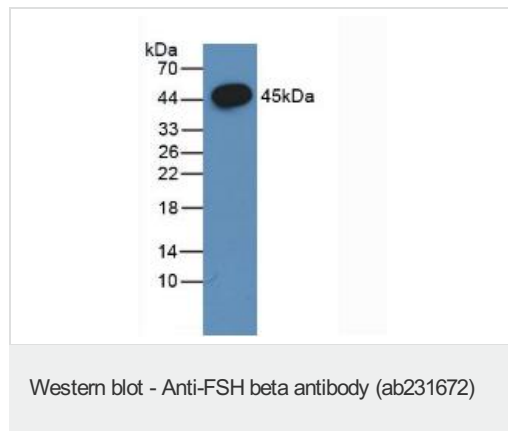
Relevance

Follicle stimulating hormone enables ovarian folliculogenesis to the antral follicle stage and is essential for Sertoli cell proliferation and maintenance of sperm quality in the testis. Members of the pituitary glycoprotein hormone family, of which FSH is one consist of a shared alpha chain and a beta chain encoded by a separate gene. The FSH beta gene encodes the beta subunit of follicle stimulating hormone.

Cellular localization

Secreted

Images

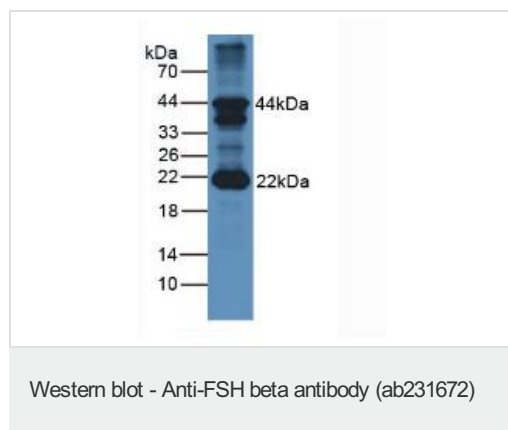


Anti-FSH beta antibody (ab231672) at 1 µg/ml + Recombinant pig FSH beta protein

Secondary

HRP-Linked Guinea pig anti-Rabbit at 1/2000 dilution

Predicted band size: 15 kDa



Anti-FSH beta antibody (ab231672) at 1 µg/ml + Mouse cerebellum lysate

Secondary

HRP-Linked Guinea pig anti-Rabbit at 1/2000 dilution

Predicted band size: 15 kDa

Please note: All products are "FOR RESEARCH USE ONLY. NOT FOR USE IN DIAGNOSTIC PROCEDURES"

Our Abpromise to you: Quality guaranteed and expert technical support

- Replacement or refund for products not performing as stated on the datasheet
- Valid for 12 months from date of delivery
- Response to your inquiry within 24 hours

- We provide support in Chinese, English, French, German, Japanese and Spanish
- Extensive multi-media technical resources to help you
- We investigate all quality concerns to ensure our products perform to the highest standards

If the product does not perform as described on this datasheet, we will offer a refund or replacement. For full details of the Abpromise, please visit <https://www.abcam.com/abpromise> or contact our technical team.

Terms and conditions

- Guarantee only valid for products bought direct from Abcam or one of our authorized distributors